

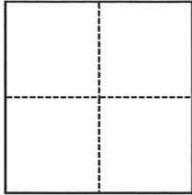
# CORNER RECORD

Agency Index CR-24-373  
Document Number \_\_\_\_\_

City of \_\_\_\_\_ County of SAN JOAQUIN, California  
Brief Legal Description PARCEL 1, P.M. 23-150, S.J.C.R.

### CORNER TYPE

### COORDINATES (Optional)



- Government Corner
- Meander
- Rancho
- Control
- Property
- Other

Date of Survey October 1, 2024

N. \_\_\_\_\_ E. \_\_\_\_\_  
 Elevation \_\_\_\_\_  
 Units  Metric  U.S. Survey Foot  
 Horizontal Datum \_\_\_\_\_  
 Zone \_\_\_\_\_ Epoch Date \_\_\_\_\_  
 Vertical Datum \_\_\_\_\_  
 Complies with Public Resources Code §§8801-8819  
 Complies with Public Resources Code §§8890-8902

PLS Act Ref.:  8765(d)  8771  8773  Other:  
 Corner/Monument:  Left as found  Established  Rebuilt  Pre-Construction  
 Found and tagged  Reestablished  Referenced  Post-Construction

Narrative of corner identified and monument as found, set, reset, replaced, or removed:  
 See sheet #2 for description(s):

SEE SHEET 2 OF 2 FOR MONUMENTS FOUND AND SET.

### SURVEYOR'S STATEMENT

This Corner Record was prepared by me or under my direction in conformance with  
 the Professional Land Surveyors' Act on 10/03/2024  
 Signed Walter John Shoup P.L.S. or R.C.E. No. L-7736



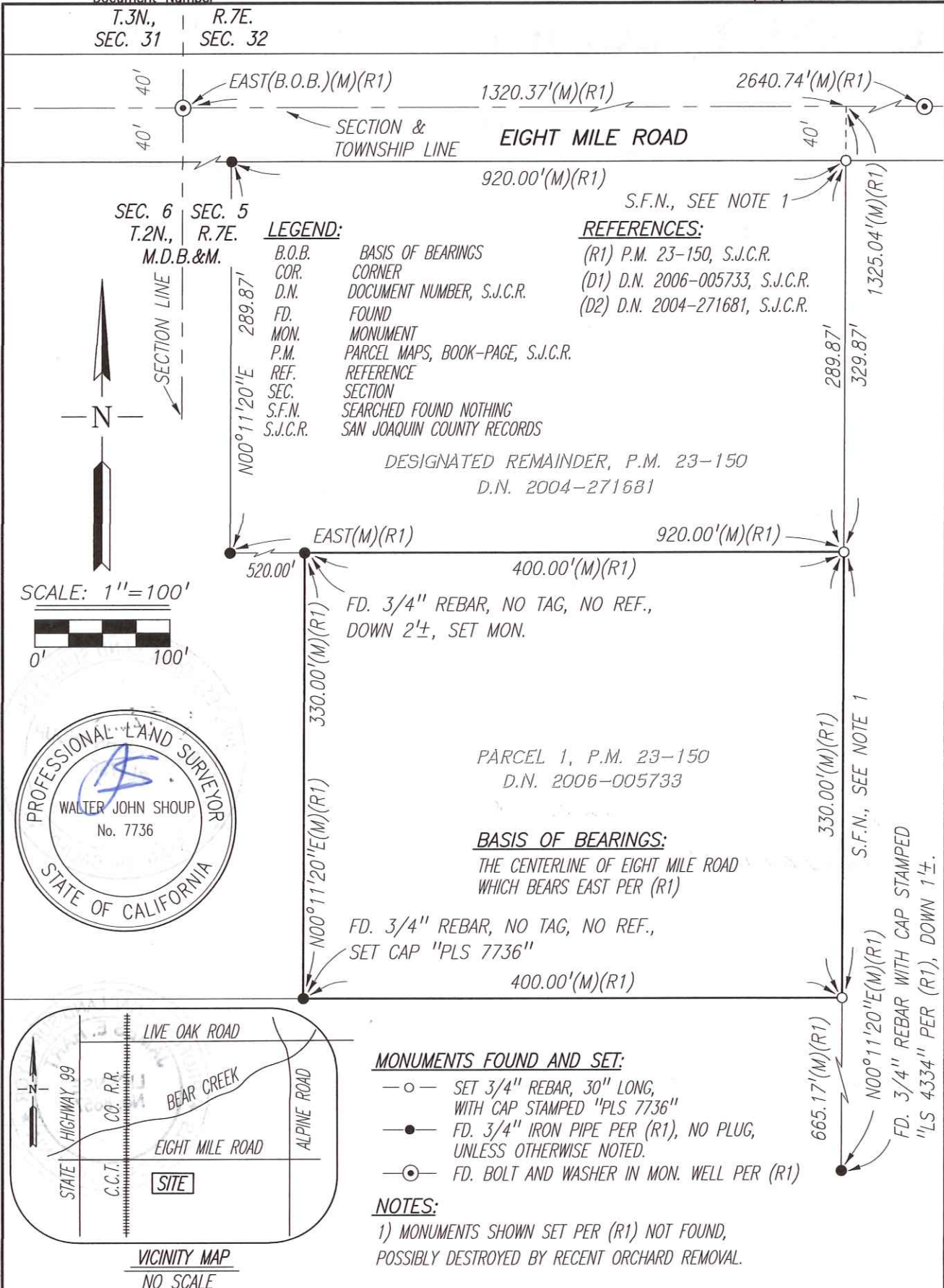
### COUNTY SURVEYOR'S STATEMENT

This Corner Record was received October 4, 2024  
 and examined and filed October 17, 2024  
 Signed James E. Hart P.L.S. or R.C.E. No. 8657  
 Title County Surveyor



County Surveyor's Comment

T.3N., SEC. 31 | R.7E. SEC. 32



SEC. 6 T.2N., M.D.B.&M. | SEC. 5 R.7E.

**LEGEND:**

- B.O.B. BASIS OF BEARINGS
- COR. CORNER
- D.N. DOCUMENT NUMBER, S.J.C.R.
- FD. FOUND
- MON. MONUMENT
- P.M. PARCEL MAPS, BOOK-PAGE, S.J.C.R.
- REF. REFERENCE
- SEC. SECTION
- S.F.N. SEARCHED FOUND NOTHING
- S.J.C.R. SAN JOAQUIN COUNTY RECORDS

**REFERENCES:**

- (R1) P.M. 23-150, S.J.C.R.
- (D1) D.N. 2006-005733, S.J.C.R.
- (D2) D.N. 2004-271681, S.J.C.R.

DESIGNATED REMAINDER, P.M. 23-150  
D.N. 2004-271681

PARCEL 1, P.M. 23-150  
D.N. 2006-005733

**BASIS OF BEARINGS:**

THE CENTERLINE OF EIGHT MILE ROAD  
WHICH BEARS EAST PER (R1)

FD. 3/4" REBAR, NO TAG, NO REF.,  
SET CAP "PLS 7736"

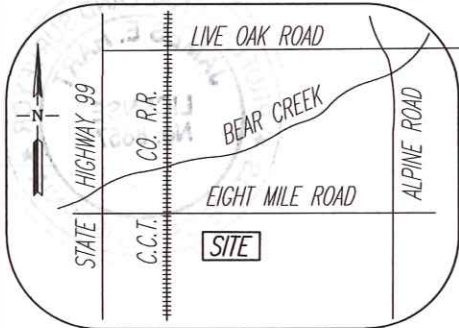
**MONUMENTS FOUND AND SET:**

- SET 3/4" REBAR, 30" LONG,  
WITH CAP STAMPED "PLS 7736"
- FD. 3/4" IRON PIPE PER (R1), NO PLUG,  
UNLESS OTHERWISE NOTED.
- ⊙— FD. BOLT AND WASHER IN MON. WELL PER (R1)

**NOTES:**

1) MONUMENTS SHOWN SET PER (R1) NOT FOUND,  
POSSIBLY DESTROYED BY RECENT ORCHARD REMOVAL.

SCALE: 1"=100'



**VICINITY MAP**  
NO SCALE

Scale: 1"=100'  
Job No.: 24-124

**CORNER RECORD**  
**EXHIBIT MAP**

Date: 10/01/24  
DWG: 24124CR.DWG