

CORNER RECORD

Agency Index

CR-24-367

Document Number

City of STOCKTON County of SAN JOAQUIN, California

Brief Legal Description FOUND MONUMENTS PER CORNER RECORD 24-159, SAN JOAQUIN COUNTY SURVEYOR'S RECORDS.

CORNER TYPE

COORDINATES (Optional)



- Government Corner Control
 Meander Property
 Rancho Other

Date of Survey May 16, 2023

N. _____ E. _____

Elevation _____

Units Metric U.S. Survey Foot

Horizontal Datum _____

Zone _____ Epoch Date _____

Vertical Datum _____

Complies with Public Resources Code §§8801-8819

Complies with Public Resources Code §§8890-8902

PLS Act Ref.: 8765(d) 8771 8773 Other:

Corner/Monument: Left as found Established Rebuilt Pre-Construction

Found and tagged Reestablished Referenced Post-Construction

Narrative of corner identified and monument as found, set, reset, replaced, or removed:

See sheet #2 for description(s):

SURVEYOR'S STATEMENT

This Corner Record was prepared by me or under my direction in conformance with

the Professional Land Surveyors' Act on April 1, 2024

Signed [Signature] P.L.S. or R.C.E. No. 8489



COUNTY SURVEYOR'S STATEMENT

This Corner Record was received October 2, 2024

and examined and filed October 15, 2024

Signed James E. Hart P.L.S. or R.C.E. No. 8657

Title County Surveyor

County Surveyor's Comment



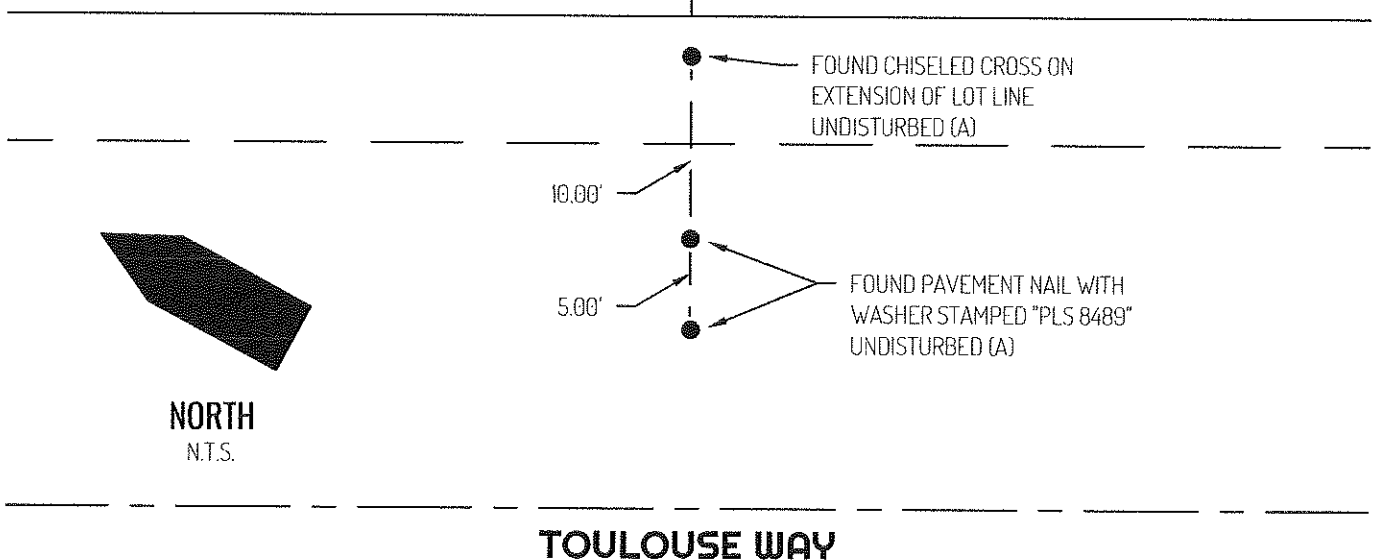
Document Number

Agency Index

28-MP-39A

8312 TOULOUSE WAY
STOCKTON, CA 95210
APN 090-510-07
LOT 170

8282 TOULOUSE WAY
STOCKTON, CA 95210
APN 090-510-08
LOT 171



LEGEND

●	FOUND MONUMENT UNDISTURBED AS NOTED
8312	REFERENCE STREET ADDRESS
MP	MAPS AND PLATS, SAN JOAQUIN COUNTY RECORDS
APN	TAX ASSESSOR PARCEL NUMBER
---	TIE LINE
—	LOT LINE
— — — — —	RIGHT-OF-WAY SIDELINE
— — — — —	RIGHT-OF-WAY CENTERLINE

REFERENCE

(A) CORNER RECORD 24-159, SAN JOAQUIN COUNTY SURVEYOR'S RECORDS