

CORNER RECORD

Agency Index CR-24-357

Document Number _____

City of _____

County of SAN JOAQUIN, California

Brief Legal Description INTERSECTION OF SOUTH D STREET AND THIRTEENTH STREET



C.M. WEBER
GRANT

CORNER TYPE

- Government Corner
- Meander
- Rancho
- Control
- Property
- Other

Date of Survey 9/13/2024

COORDINATES (Optional)

N. _____ E. _____

Elevation _____

Units Metric U.S. Survey Foot

Horizontal Datum _____

Zone _____ Epoch Date _____

Vertical Datum _____

Complies with Public Resources Code §§8801-8819

Complies with Public Resources Code §§8890-8902

PLS Act Ref: 8765(d) 8771 8773 Other:

Corner/Monument: Left as found Established Rebuilt Pre-Construction

Found and tagged Reestablished Referenced Post-Construction

Narrative of corner identified and monument as found, set, reset, replaced, or removed:

See sheet #2 for description (s):

FOUND ONE (1) 2" BRASS DISK IN MONUMENT WELL, NO PUNCH, UNKNOWN ORIGIN; SET FOUR (4) CONCRETE NAILS WITH BRASS TAG "LS 9857" AS WITNESS CORNERS, ALL AS SHOWN ON SHEET 2.

SURVEYOR'S STATEMENT

This Corner Record was prepared by me or under my direction in conformance with the Professional Land Surveyors' Act on SEPTEMBER 20, 2024

Signed Tanya Cissell P.L.S. or R.C.E. No. 9857



COUNTY SURVEYOR'S STATEMENT

This Corner Record was received September 23, 2024

and examined and filed October 10, 2024

Signed James E. Hart P.L.S. or R.C.E. No. 8657

Title County Surveyor



County Surveyor's Comment _____

LEGEND:

- ⊗ SET CONCRETE NAIL WITH BRASS TAG "LS 9857".
- FOUND MONUMENT AS NOTED.
- PM- PARCEL MAP
- S- RECORD OF SURVEY
- S.J.C.R. SAN JOAQUIN COUNTY RECORDS
- (M) MEASURED DISTANCE. ALL DISTANCES ARE MEASURED UNLESS NOTED OTHERWISE.

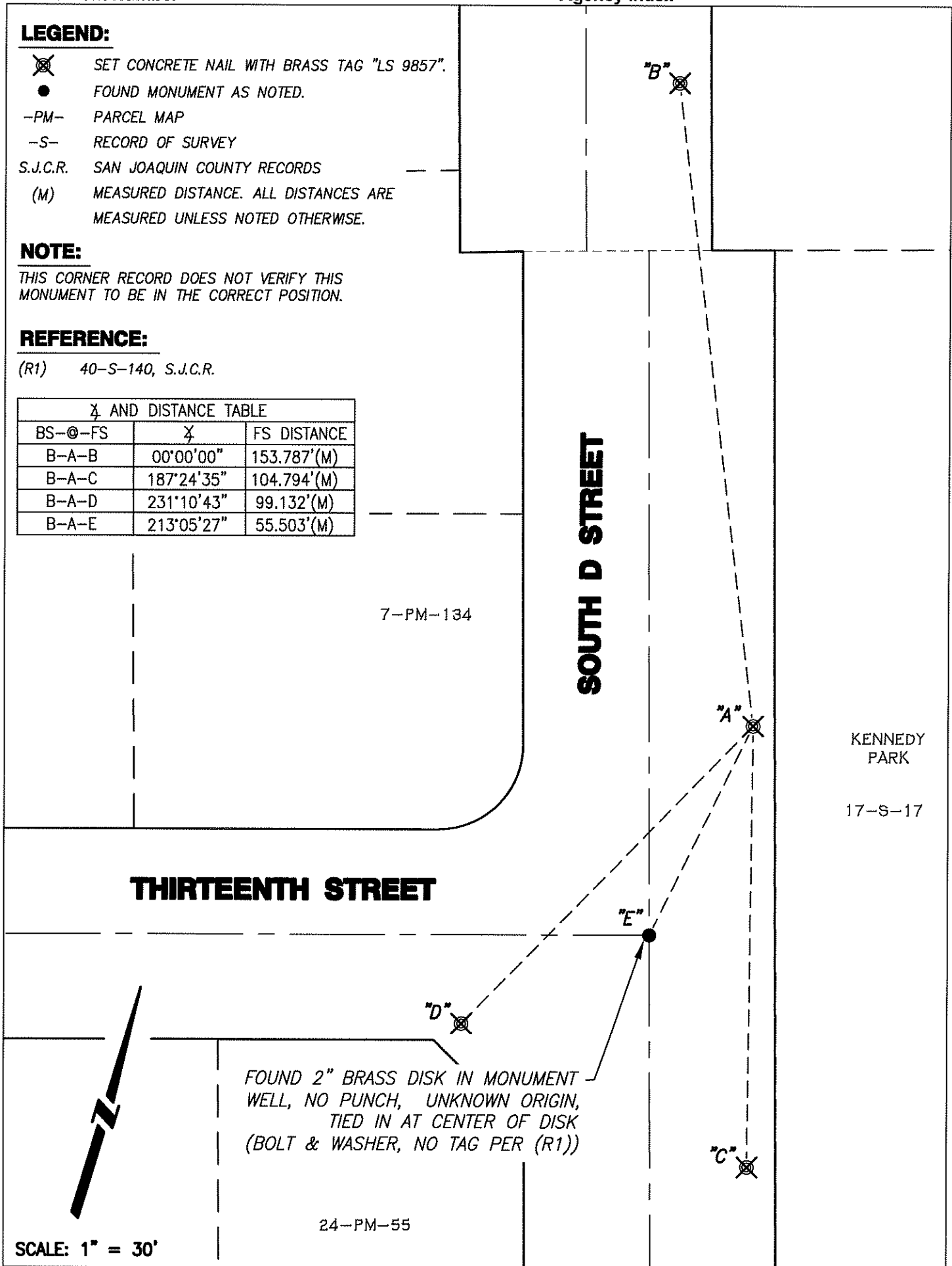
NOTE:

THIS CORNER RECORD DOES NOT VERIFY THIS MONUMENT TO BE IN THE CORRECT POSITION.

REFERENCE:

(R1) 40-S-140, S.J.C.R.

∠ AND DISTANCE TABLE		
BS-@-FS	∠	FS DISTANCE
B-A-B	00°00'00"	153.787'(M)
B-A-C	187°24'35"	104.794'(M)
B-A-D	231°10'43"	99.132'(M)
B-A-E	213°05'27"	55.503'(M)



7-PM-134

SOUTH D STREET

THIRTEENTH STREET

KENNEDY PARK

17-S-17

FOUND 2" BRASS DISK IN MONUMENT WELL, NO PUNCH, UNKNOWN ORIGIN, TIED IN AT CENTER OF DISK (BOLT & WASHER, NO TAG PER (R1))

24-PM-55

SCALE: 1" = 30'