

CORNER RECORD

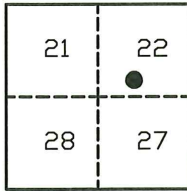
Agency Index: CR-24-350

Document Number: _____

City of _____

County of SAN JOAQUIN, California

Brief Legal Description A VERTICAL CONTROL MONUMENT AT THE NORTHEASTERLY CORNER OF BACON ISLAND.



T.2N, R.4E

CORNER TYPE

- Government Corner Control
 Meander Property
 Rancho Other

Date of Survey 7-10-24

COORDINATES (Optional)

N. _____ E. _____

Elevation _____

Units Metric U.S. Survey Foot

Horizontal Datum _____

Zone _____ Epoch Date _____

Vertical Datum _____

Complies with Public Resources Code §§8801-8819

Complies with Public Resources Code §§890-8902

PLS Act Ref: 8765(d) 8771 8773 Other:

Corner/
 Monument: Left as found Established Rebuilt Pre-Construction
 Found and Tagged Reestablished Referenced Post-Construction

Narrative of corner identified and monument as found, set, reset, replaced, or removed:

See sheet #2 for description(s):

FOUND MONUMENT AS SHOWN ON SHEET 2.

SURVEYOR'S STATEMENT

This Corner Record was prepared by me or under my direction in conformance with the Land Surveyors' Act on JULY 30, 2024,

Signed [Signature] P.L.S. or R.C.E. Number 6953



COUNTY SURVEYOR'S STATEMENT

This Corner Record was received September 18, 2024

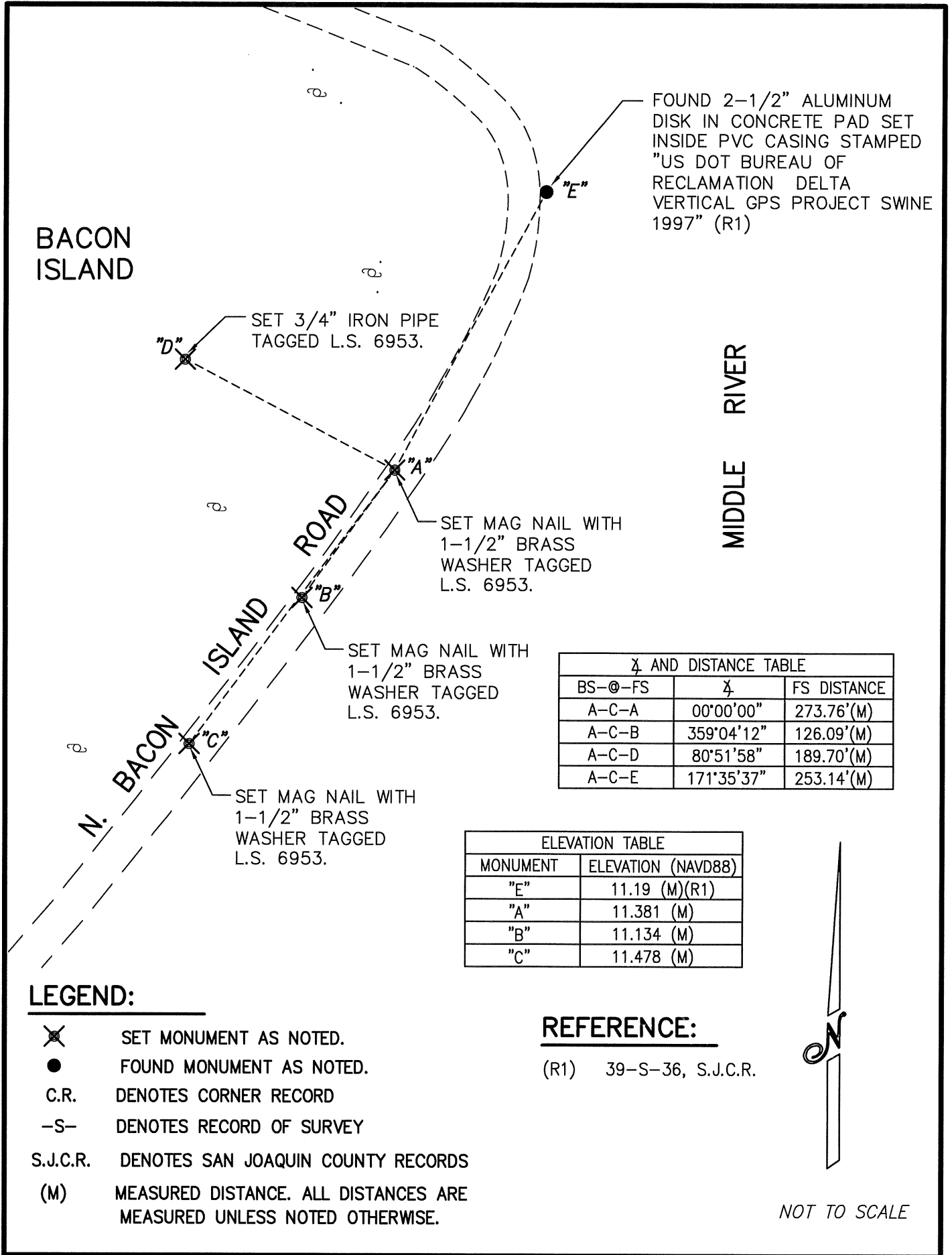
and examined and filed September 26, 2024

Signed James E. Hart P.L.S. or R.C.E. No: 8657

Title County Surveyor



County Surveyor's Comment _____



LEGEND:

- ⊗ SET MONUMENT AS NOTED.
- FOUND MONUMENT AS NOTED.
- C.R. DENOTES CORNER RECORD
- S- DENOTES RECORD OF SURVEY
- S.J.C.R. DENOTES SAN JOAQUIN COUNTY RECORDS
- (M) MEASURED DISTANCE. ALL DISTANCES ARE MEASURED UNLESS NOTED OTHERWISE.

REFERENCE:

(R1) 39-S-36, S.J.C.R.



NOT TO SCALE