

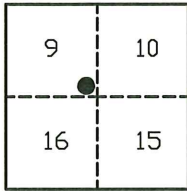
# CORNER RECORD

Agency Index: CR-24-348

Document Number: \_\_\_\_\_

City of \_\_\_\_\_ County of SAN JOAQUIN, California

Brief Legal Description A CONTROL MONUMENT AT THE SOUTHEASTERLY CORNER OF BACON ISLAND.



T.1N, R.4E

### CORNER TYPE

- Government Corner
- Control
- Meander
- Property
- Rancho
- Other

Date of Survey 7-10-24

### COORDINATES (Optional)

- N. \_\_\_\_\_ E. \_\_\_\_\_
- Elevation \_\_\_\_\_
- Units  Metric  U.S. Survey Foot
- Horizontal Datum \_\_\_\_\_
- Zone \_\_\_\_\_ Epoch Date \_\_\_\_\_
- Vertical Datum \_\_\_\_\_
- Complies with Public Resources Code ~~SS~~8801-8819
- Complies with Public Resources Code ~~SS~~8890-8902

PLS Act Ref:  8765(d)  8771  8773  Other:

Corner/Monument:  Left as found  Established  Rebuilt  Pre-Construction

Found and Tagged  Reestablished  Referenced  Post-Construction

Narrative of corner identified and monument as found, set, reset, replaced, or removed:

See sheet #2 for description(s):

FOUND MONUMENT AS SHOWN ON SHEET 2.

### SURVEYOR'S STATEMENT

This Corner Record was prepared by me or under my direction in conformance with the Land Surveyors' Act on JULY 30, 2024,



Signed [Signature] P.L.S. or R.C.E. Number 6953

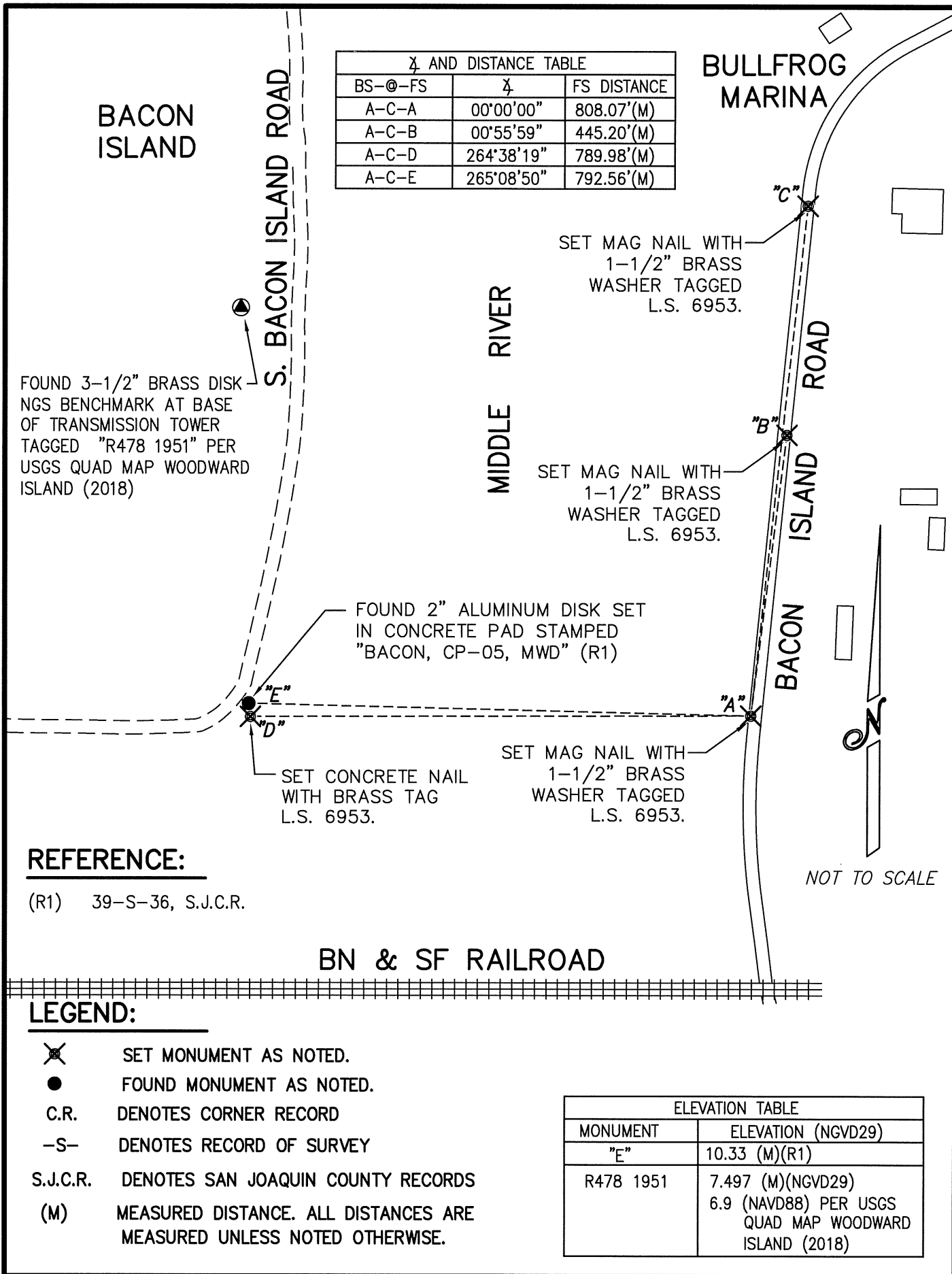
### COUNTY SURVEYOR'S STATEMENT

This Corner Record was received September 18, 2024 and examined and filed September 26, 2024

Signed James E. Hart P.L.S. or R.C.E. No: 8657  
Title County Surveyor



County Surveyor's Comment \_\_\_\_\_



4 AND DISTANCE TABLE		
BS-@-FS	4	FS DISTANCE
A-C-A	00°00'00"	808.07'(M)
A-C-B	00°55'59"	445.20'(M)
A-C-D	264°38'19"	789.98'(M)
A-C-E	265°08'50"	792.56'(M)

**BULLFROG MARINA**

**BACON ISLAND**

**S. BACON ISLAND ROAD**

**MIDDLE RIVER**

**BACON ISLAND ROAD**

FOUND 2" ALUMINUM DISK SET IN CONCRETE PAD STAMPED "BACON, CP-05, MWD" (R1)

FOUND 3-1/2" BRASS DISKS BENCHMARK AT BASE OF TRANSMISSION TOWER TAGGED "R478 1951" PER USGS QUAD MAP WOODWARD ISLAND (2018)

SET MAG NAIL WITH 1-1/2" BRASS WASHER TAGGED L.S. 6953.

SET MAG NAIL WITH 1-1/2" BRASS WASHER TAGGED L.S. 6953.

SET MAG NAIL WITH 1-1/2" BRASS WASHER TAGGED L.S. 6953.

SET CONCRETE NAIL WITH BRASS TAG L.S. 6953.

**REFERENCE:**

(R1) 39-S-36, S.J.C.R.

**BN & SF RAILROAD**

**LEGEND:**

- ⊗ SET MONUMENT AS NOTED.
- FOUND MONUMENT AS NOTED.
- C.R. DENOTES CORNER RECORD
- S- DENOTES RECORD OF SURVEY
- S.J.C.R. DENOTES SAN JOAQUIN COUNTY RECORDS
- (M) MEASURED DISTANCE. ALL DISTANCES ARE MEASURED UNLESS NOTED OTHERWISE.

ELEVATION TABLE	
MONUMENT	ELEVATION (NGVD29)
"E"	10.33 (M)(R1)
R478 1951	7.497 (M)(NGVD29) 6.9 (NAVD88) PER USGS QUAD MAP WOODWARD ISLAND (2018)

NOT TO SCALE