

# CORNER RECORD

Agency Index CR-24-347

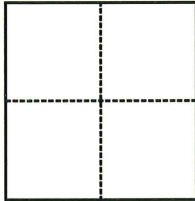
Document Number \_\_\_\_\_

City of \_\_\_\_\_ County of SAN JOAQUIN, California

Brief Legal Description FOUND MAG NAIL AND BRASS TAG "SJCO" IN PAVEMENT NEAR CENTERLINE OF CLOVER ROAD, 2210'± WESTERLY OF TRACY BOULEVARD

### CORNER TYPE

### COORDINATES (Optional)



- Government Corner
- Meander
- Rancho
- Control
- Property
- Other

Date of Survey JULY 7, 2024

N. \_\_\_\_\_ E. \_\_\_\_\_

Elevation \_\_\_\_\_

Units  Metric  U.S. Survey Foot

Horizontal Datum \_\_\_\_\_

Zone \_\_\_\_\_ Epoch Date \_\_\_\_\_

Vertical Datum \_\_\_\_\_

Complies with Public Resources Code §§8801-8819

Complies with Public Resources Code §§8890-8902

PLS Act Ref.:  8765(d)  8771  8773  Other:

Corner/Monument:  Left as found  Established  Rebuilt  Pre-Construction

Found and tagged  Reestablished  Referenced  Post-Construction

Narrative of corner identified and monument as found, set, reset, replaced, or removed:

See sheet #2 for description(s):

FOUND MAG NAIL AND BRASS TAG "SJCO" IN PAVEMENT NEAR CENTERLINE OF CLOVER ROAD, 2210'± WESTERLY OF TRACY BOULEVARD, PER CR-15-123, SAN JOAQUIN COUNTY SURVEYOR'S RECORDS.

THIS MONUMENT HAS BEEN REFERENCED PRIOR TO CONSTRUCTION.

THE TIES SHOWN HEREON ARE FOR THE PURPOSE OF PERPETUATING FOUND MONUMENTS AND NO CLAIM IS MADE TO THEIR RELATIONSHIP TO THE BOUNDARY LOCATION SHOWN HEREON.

### SURVEYOR'S STATEMENT

This Corner Record was prepared by me or under my direction in conformance with

the Professional Land Surveyors' Act on SEPTEMBER 16, 2024

Signed Nathaniel S. Anderson P.L.S. or R.C.E. No. 9667



### COUNTY SURVEYOR'S STATEMENT

This Corner Record was received September 18, 2024

and examined and filed September 26, 2024

Signed James E. Hart P.L.S. or R.C.E. No. 8657

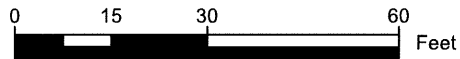
Title SAN JOAQUIN COUNTY SURVEYOR



County Surveyor's Comment



23-00033-137



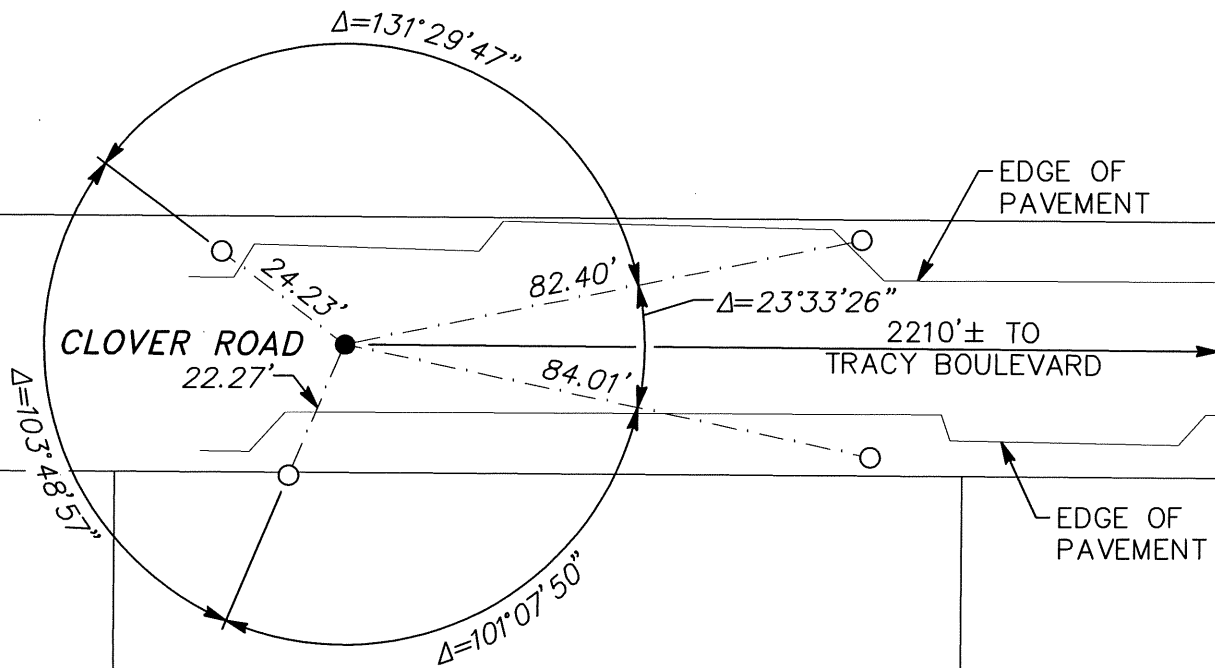
SCALE 1" = 30'



**LEGEND**

- APPROXIMATE LOT LINE
- - - MONUMENT TIE LINE
- FOUND MAG NAIL AND BRASS TAG "SJCO" IN PAVEMENT NEAR CENTERLINE OF CLOVER ROAD, PER CR-15-123
- SET 3/4" IRON PIPE WITH PLUG, "PLS 9667" IN DIRT
- APN ASSESSOR'S PARCEL NUMBER
- CR CORNER RECORD, SAN JOAQUIN COUNTY SURVEYOR'S RECORDS
- RS RECORD OF SURVEY, SAN JOAQUIN COUNTY RECORDS
- M&P MAPS & PLATS, SAN JOAQUIN COUNTY RECORDS

11097 W. CLOVER ROAD  
 (10 RS 165)  
 APN: 214-180-01



LOT 4  
 (13 M&P 82)  
 APN: 214-180-34

LOT 5  
 (13 M&P 82)  
 APN: 214-180-33