

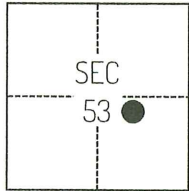
CORNER RECORD

Agency Index CR-24-343
Document Number _____

City of STOCKTON County of SAN JOAQUIN, California
Brief Legal Description FOUND MONUMENTS SHOWN ON CORNER RECORD 24-203, SAN JOAQUIN COUNTY SURVEYOR'S RECORDS.

CORNER TYPE

COORDINATES (Optional)



C.M. WEBER
GRANT

- Government Corner
- Meander
- Rancho
- Control
- Property
- Other

Date of Survey April 30, 2024

N. _____ E. _____

Elevation _____

Units Metric U.S. Survey Foot

Horizontal Datum _____

Zone _____ Epoch Date _____

Vertical Datum _____

Complies with Public Resources Code §§8801-8819

Complies with Public Resources Code §§8890-8902

PLS Act Ref.: 8765(d) 8771 8773 Other:

Corner/Monument: Left as found Established Rebuilt Pre-Construction

Found and tagged Reestablished Referenced Post-Construction

Narrative of corner identified and monument as found, set, reset, replaced, or removed:

See sheet #2 for description(s):

SURVEYOR'S STATEMENT

This Corner Record was prepared by me or under my direction in conformance with

the Professional Land Surveyors' Act on June 12, 2024

Signed Scott L. Blake P.L.S. or R.C.E. No. 8489



COUNTY SURVEYOR'S STATEMENT

This Corner Record was received September 5, 2024

and examined and filed September 20, 2024

Signed James E. Hart P.L.S. or R.C.E. No. 8657

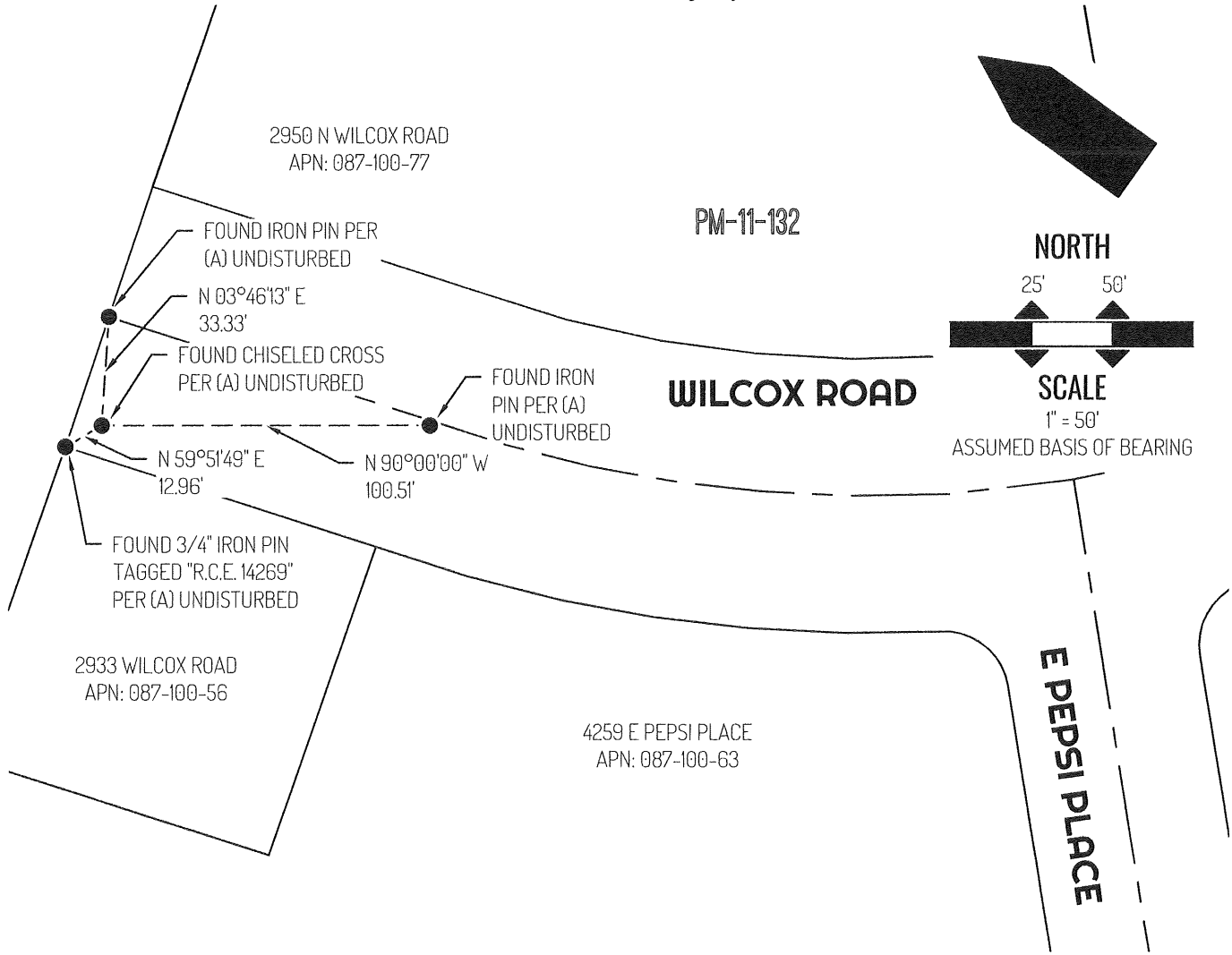
Title County Surveyor

County Surveyor's Comment



Document Number

Agency Index



LEGEND

●	FOUND MONUMENT AS NOTED PER (A)
2933	REFERENCE STREET ADDRESS
PM	PARCEL MAPS, SAN JOAQUIN COUNTY RECORDS
APN	TAX ASSESSOR PARCEL NUMBER
---	TIE LINE
—	LOT LINE
— — —	RIGHT-OF-WAY CENTERLINE

REFERENCE

(A) CORNER RECORD 24-203, SAN JOAQUIN COUNTY SURVEYOR'S RECORDS