

CORNER RECORD

Agency Index CR-24-339

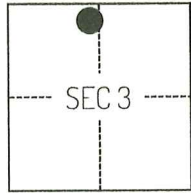
Document Number _____

City of _____ County of SAN JOAQUIN, California

Brief Legal Description FOUND MONUMENTS SHOWN ON CORNER RECORD 24-179, SAN JOAQUIN COUNTY SURVEYOR'S RECORDS.

CORNER TYPE

COORDINATES (Optional)



T2N/R6E

- Government Corner Control
 Meander Property
 Rancho Other

Date of Survey February 23, 2024

N. _____ E. _____

Elevation _____

Units Metric U.S. Survey Foot

Horizontal Datum _____

Zone _____ Epoch Date _____

Vertical Datum _____

Complies with Public Resources Code §§8801-8819

Complies with Public Resources Code §§8890-8902

PLS Act Ref.: 8765(d) 8771 8773 Other:

Corner/Monument: Left as found Established Rebuilt Pre-Construction

Found and tagged Reestablished Referenced Post-Construction

Narrative of corner identified and monument as found, set, reset, replaced, or removed:

See sheet #2 for description(s):

SURVEYOR'S STATEMENT

This Corner Record was prepared by me or under my direction in conformance with the Professional Land Surveyors' Act on April 2, 2024.

Signed [Signature] P.L.S. or R.C.E. No. 8489



COUNTY SURVEYOR'S STATEMENT

This Corner Record was received September 5, 2024 and examined and filed September 20, 2024.

Signed James E. Hart P.L.S. or R.C.E. No. 8657

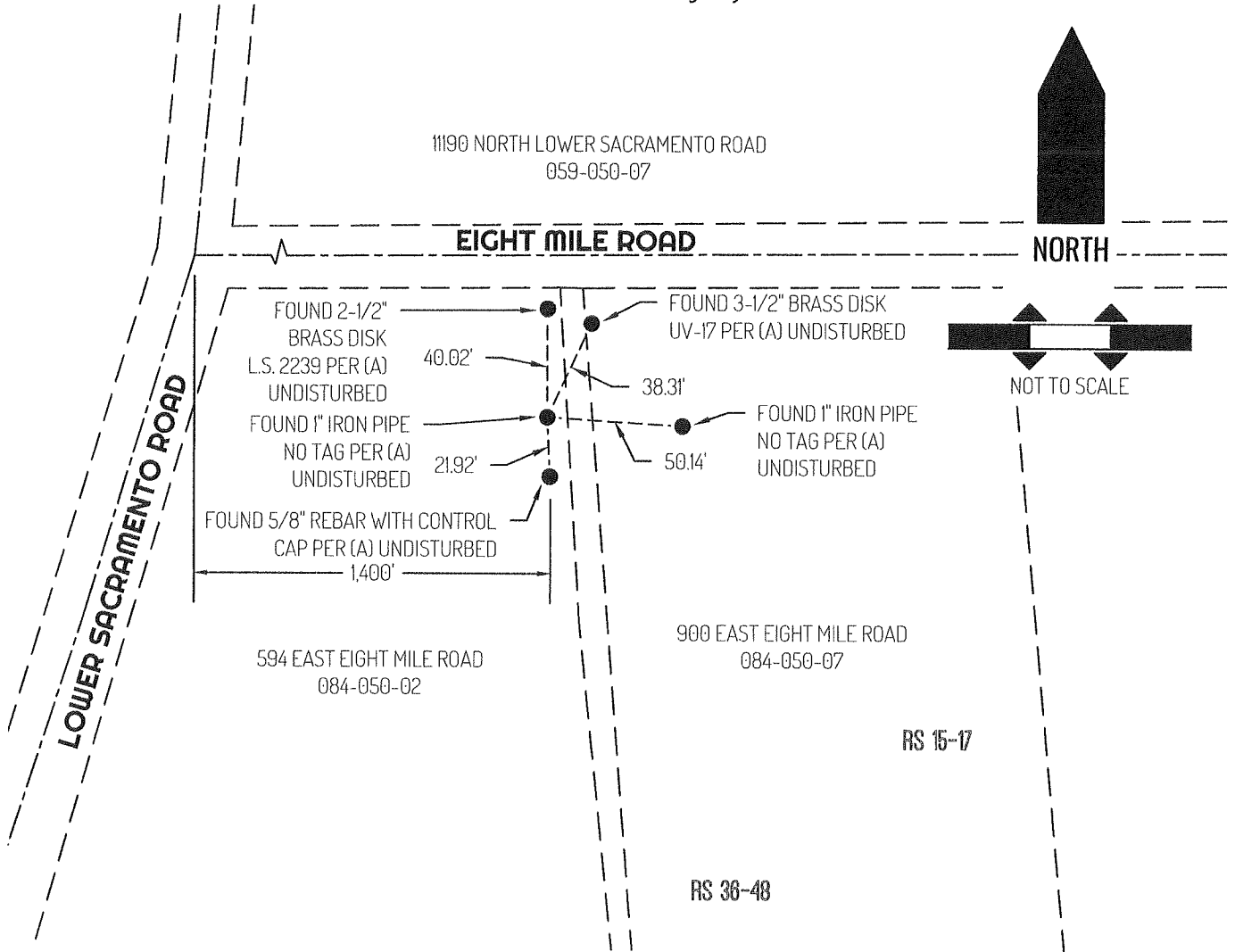
Title County Surveyor

County Surveyor's Comment _____



Document Number

Agency Index



LEGEND

●	FOUND MONUMENT AS NOTED
594	REFERENCE STREET ADDRESS
RS	RECORD OF SURVEY, SAN JOAQUIN COUNTY RECORDS
APN	TAX ASSESSOR PARCEL NUMBER
---	TIE LINE
---	RIGHT-OF-WAY SIDELINE
---	RIGHT-OF-WAY CENTERLINE

REFERENCE

(A) CORNER RECORD 24-179, SAN JOAQUIN COUNTY SURVEYOR'S RECORDS.