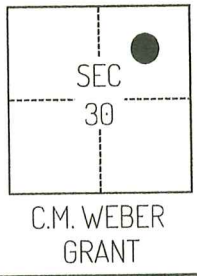


# CORNER RECORD

Agency Index CR-24-338  
 Document Number \_\_\_\_\_

City of STOCKTON County of SAN JOAQUIN, California  
 Brief Legal Description FOUND MONUMENTS SHOWN ON CORNER RECORD 24-202, SAN JOAQUIN COUNTY SURVEYOR'S RECORDS.



**CORNER TYPE**

Government Corner     Control  
 Meander                     Property  
 Rancho                         Other

Date of Survey May 16, 2023

**COORDINATES (Optional)**

N. \_\_\_\_\_ E. \_\_\_\_\_  
 Elevation \_\_\_\_\_  
 Units     Metric             U.S. Survey Foot  
 Horizontal Datum \_\_\_\_\_  
 Zone \_\_\_\_\_ Epoch Date \_\_\_\_\_  
 Vertical Datum \_\_\_\_\_  
 Complies with Public Resources Code §§8801-8819  
 Complies with Public Resources Code §§8890-8902

PLS Act Ref.:     8765(d)             8771             8773             Other:

Corner/  
Monument:     Left as found             Established             Rebuilt             Pre-Construction  
 Found and tagged             Reestablished             Referenced             Post-Construction

Narrative of corner identified and monument as found, set, reset, replaced, or removed:  
 See sheet #2 for description(s):

### SURVEYOR'S STATEMENT

This Corner Record was prepared by me or under my direction in conformance with  
 the Professional Land Surveyors' Act on November 12, 2023  
 Signed [Signature] P.L.S. or R.C.E. No. 8489



### COUNTY SURVEYOR'S STATEMENT

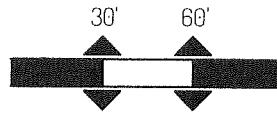
This Corner Record was received September 5, 2024  
 and examined and filed September 20, 2024  
 Signed [Signature] P.L.S. or R.C.E. No. 8657  
 Title County Surveyor



County Surveyor's Comment

Document Number

Agency Index



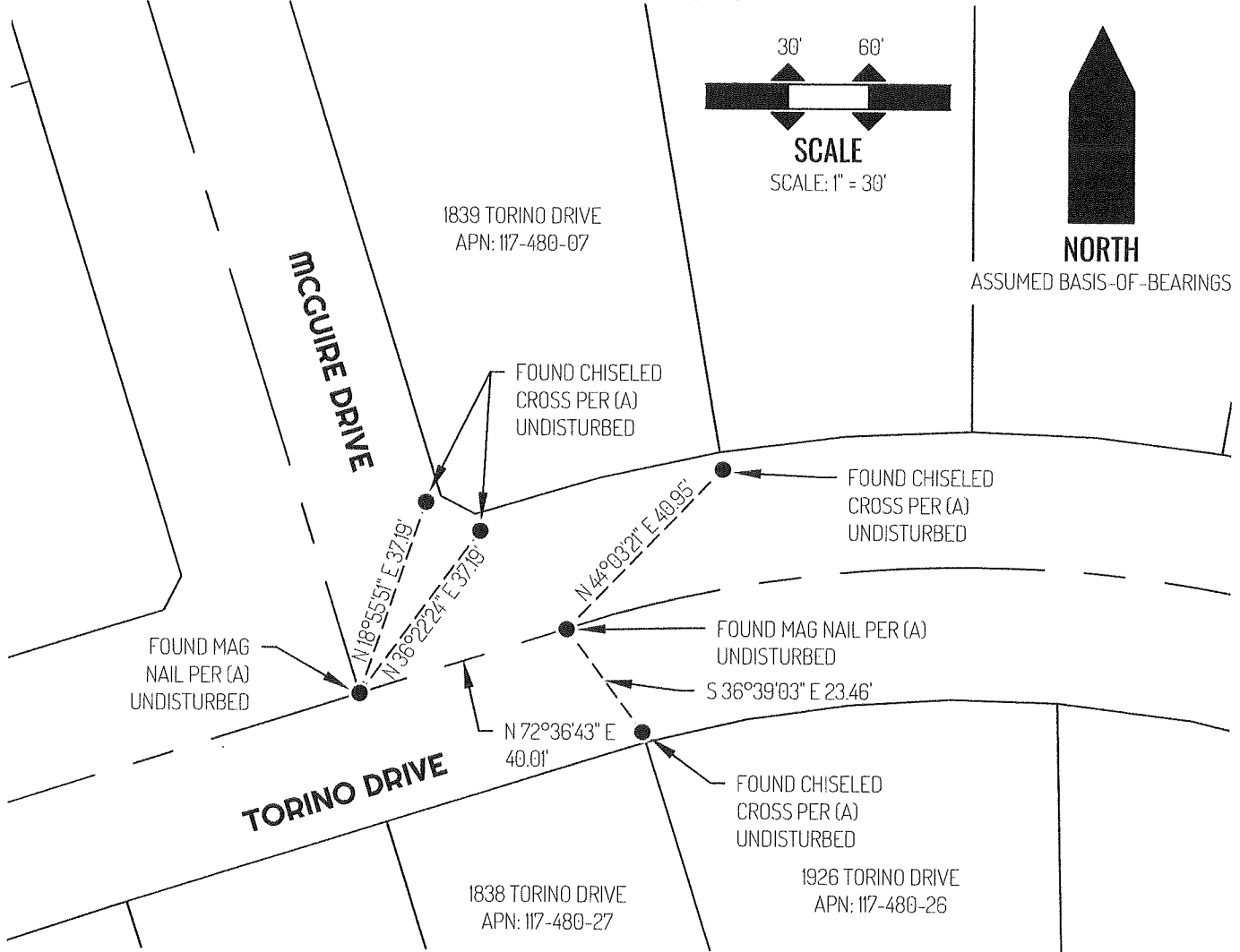
SCALE

SCALE: 1" = 30'



NORTH

ASSUMED BASIS-OF-BEARINGS



**LEGEND**

●	FOUND MONUMENT AS NOTED
1926	REFERENCE STREET ADDRESS
APN	TAX ASSESSOR PARCEL NUMBER
—————	LOT LINE
—————	RIGHT-OF-WAY CENTERLINE
-----	TIE LINE

**REFERENCE**

(A) CORNER RECORD 24-202, SAN JOAQUIN COUNTY SURVEYOR'S RECORDS