

CORNER RECORD

Agency Index CR-24-335

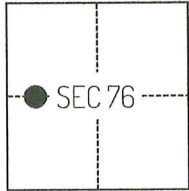
Document Number _____

City of _____ County of SAN JOAQUIN, California

Brief Legal Description FOUND MONUMENTS PER CORNER RECORD 23-084, SAN JOAQUIN COUNTY SURVEYOR'S RECORDS AND 6-RS-45, SAN JOAQUIN COUNTY RECORDS.

CORNER TYPE

COORDINATES (Optional)



C.M. WEBER GRANT

- Government Corner Control
 Meander Property
 Rancho Other

Date of Survey February 14, 2024

N. _____ E. _____

Elevation _____

Units Metric U.S. Survey Foot

Horizontal Datum _____

Zone _____ Epoch Date _____

Vertical Datum _____

Complies with Public Resources Code §§8801-8819

Complies with Public Resources Code §§8890-8902

PLS Act Ref.: 8765(d) 8771 8773 Other:

Corner/Monument: Left as found Established Rebuilt Pre-Construction

Found and tagged Reestablished Referenced Post-Construction

Narrative of corner identified and monument as found, set, reset, replaced, or removed:

See sheet #2 for description(s):

SURVEYOR'S STATEMENT

This Corner Record was prepared by me or under my direction in conformance with the Professional Land Surveyors' Act on April 1, 2024.

Signed [Signature] P.L.S. or R.C.E. No. 8489



COUNTY SURVEYOR'S STATEMENT

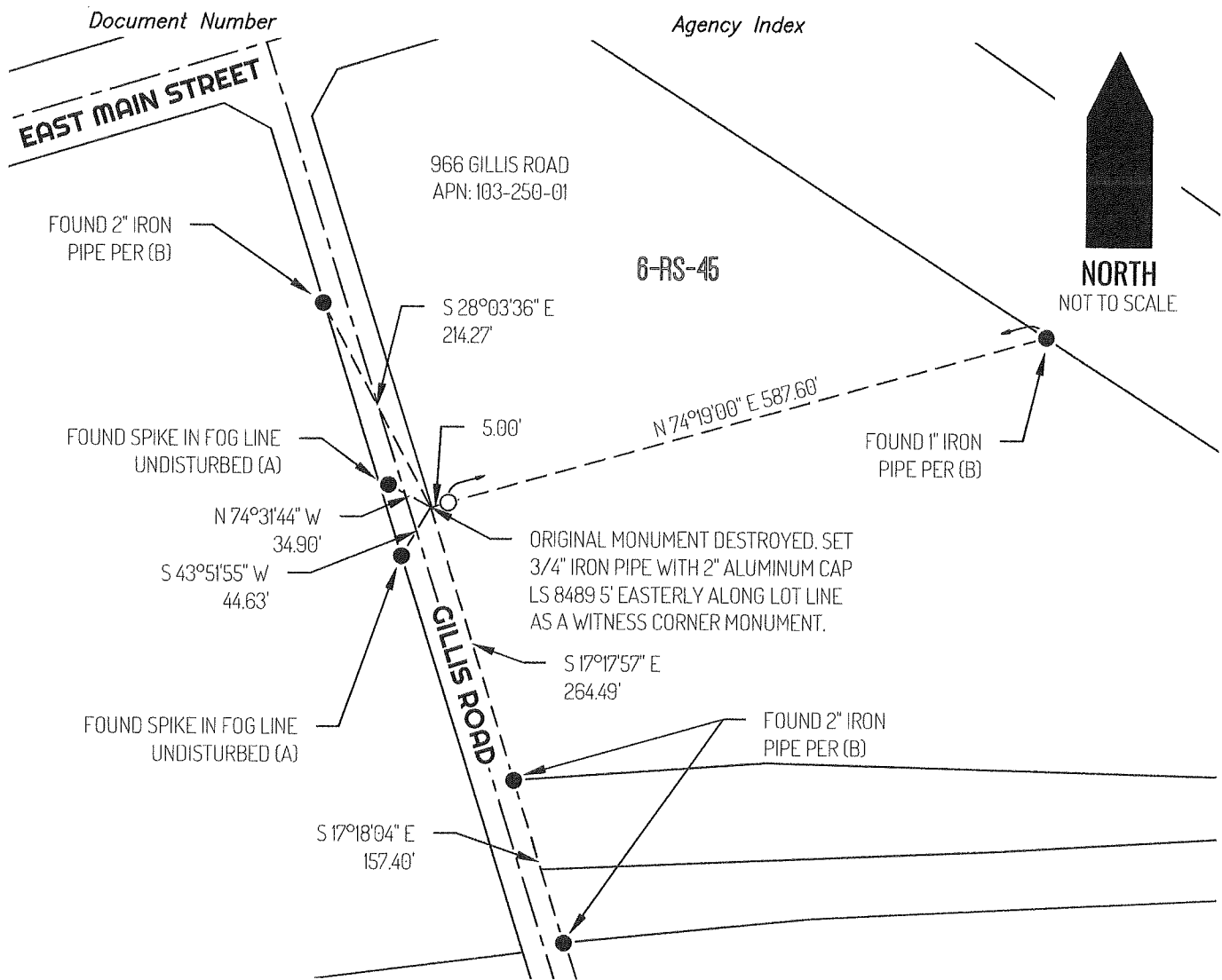
This Corner Record was received September 5, 2024 and examined and filed September 20, 2024.

Signed [Signature] P.L.S. or R.C.E. No. 8657

Title County Surveyor

County Surveyor's Comment _____





LEGEND

●	FOUND MONUMENT AS NOTED
○	SET MONUMENT AS NOTED
966	REFERENCE STREET ADDRESS
APN	TAX ASSESSOR PARCEL NUMBER
RS	RECORD OF SURVEY, SAN JOAQUIN COUNTY RECORDS
---	TIE LINE
---	LOT LINE
---	RIGHT-OF-WAY CENTERLINE

REFERENCES

- (A) CORNER RECORD 23-084, SAN JOAQUIN COUNTY SURVEYOR'S RECORDS
- (B) BOOK OF SURVEYS, VOLUME 6 AT PAGE 45, SAN JOAQUIN COUNTY RECORDS