

CORNER RECORD

Agency Index CR-24-334

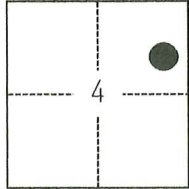
Document Number _____

City of STOCKTON County of SAN JOAQUIN, California

Brief Legal Description FOUND MONUMENTS SHOWN ON CORNER RECORD 24-106, SAN JOAQUIN COUNTY SURVEYOR'S RECORDS.

CORNER TYPE

COORDINATES (Optional)



C.M. WEBER GRANT

- Government Corner
- Meander
- Rancho
- Control
- Property
- Other

Date of Survey February 08, 2024

N. _____ E. _____

Elevation _____

Units Metric U.S. Survey Foot

Horizontal Datum _____

Zone _____ Epoch Date _____

Vertical Datum _____

Complies with Public Resources Code §§8801-8819

Complies with Public Resources Code §§8890-8902

PLS Act Ref.: 8765(d) 8771 8773 Other:

Corner/Monument: Left as found Established Rebuilt Pre-Construction

Found and tagged Reestablished Referenced Post-Construction

Narrative of corner identified and monument as found, set, reset, replaced, or removed:

See sheet #2 for description(s):

SURVEYOR'S STATEMENT

This Corner Record was prepared by me or under my direction in conformance with the Professional Land Surveyors' Act on June 26, 2024.

Signed [Signature] P.L.S. or R.C.E. No. 8489



COUNTY SURVEYOR'S STATEMENT

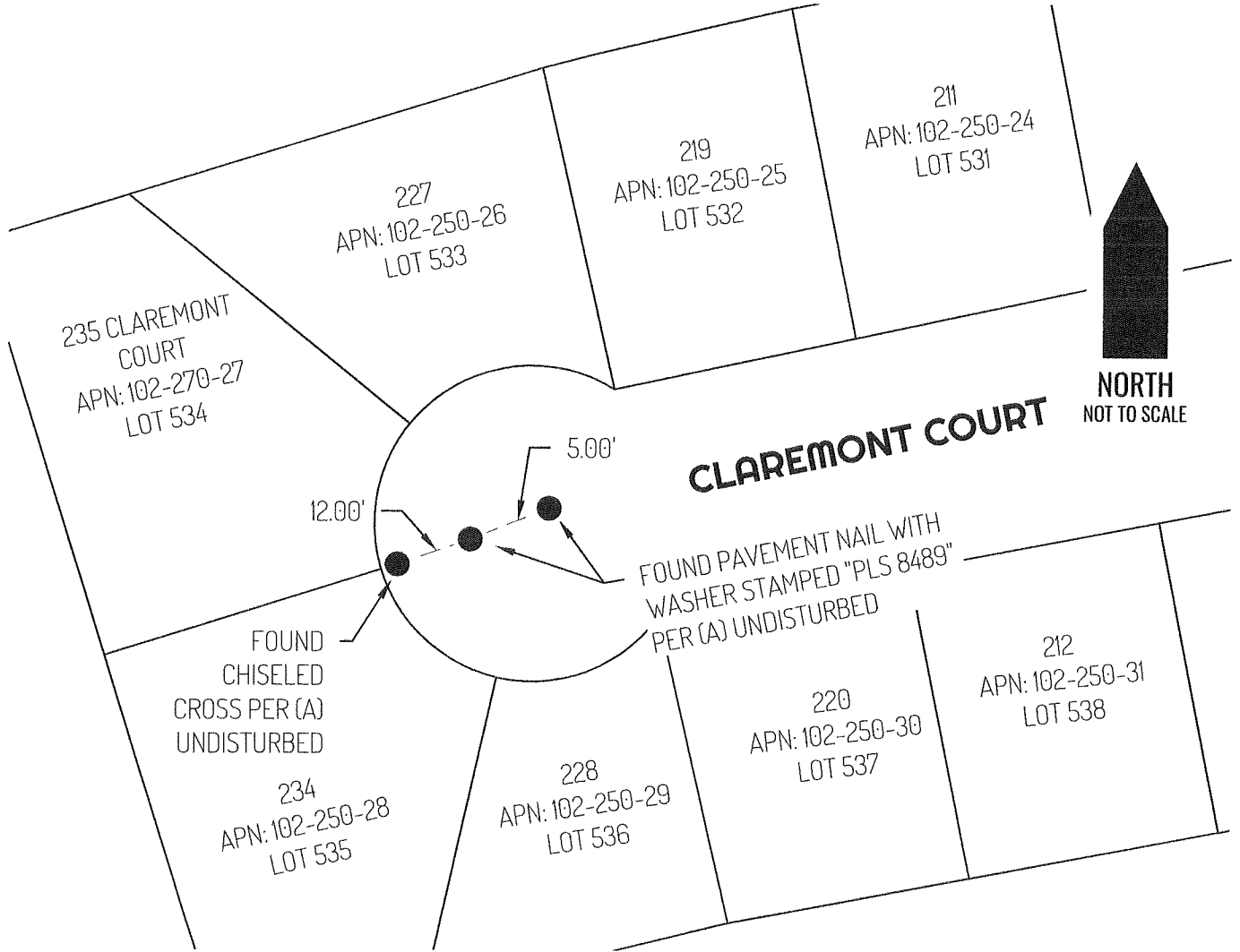
This Corner Record was received September 5, 2024 and examined and filed September 20, 2024.

Signed [Signature] P.L.S. or R.C.E. No. 8657

Title County Surveyor

County Surveyor's Comment _____





LEGEND

<p>●</p> <p>435</p> <p>APN</p>	<p>FOUND MONUMENT AS NOTED PER (A)</p> <p>REFERENCE STREET ADDRESS</p> <p>TAX ASSESSOR PARCEL NUMBER</p>
<p>—————</p>	<p>LOT LINE</p>
<p>-----</p>	<p>TIE LINE</p>

REFERENCE

(A) CORNER RECORD 24-106, SAN JOAQUIN COUNTY SURVEYOR'S RECORDS