

# CORNER RECORD

Agency Index CR-24-333

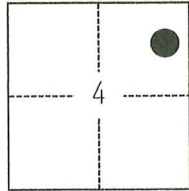
Document Number \_\_\_\_\_

City of STOCKTON County of SAN JOAQUIN, California

Brief Legal Description FOUND MONUMENTS SHOWN ON CORNER RECORD 23-121, SAN JOAQUIN COUNTY SURVEYOR'S RECORDS.

### CORNER TYPE

### COORDINATES (Optional)



C.M. WEBER GRANT

- Government Corner
- Meander
- Rancho
- Control
- Property
- Other

Date of Survey February 08, 2024

N. \_\_\_\_\_ E. \_\_\_\_\_

Elevation \_\_\_\_\_

Units  Metric  U.S. Survey Foot

Horizontal Datum \_\_\_\_\_

Zone \_\_\_\_\_ Epoch Date \_\_\_\_\_

Vertical Datum \_\_\_\_\_

Complies with Public Resources Code §§8801-8819

Complies with Public Resources Code §§8890-8902

PLS Act Ref.:  8765(d)  8771  8773  Other:

Corner/Monument:  Left as found  Established  Rebuilt  Pre-Construction

Found and tagged  Reestablished  Referenced  Post-Construction

Narrative of corner identified and monument as found, set, reset, replaced, or removed:

See sheet #2 for description(s):

### SURVEYOR'S STATEMENT

This Corner Record was prepared by me or under my direction in conformance with the Professional Land Surveyors' Act on June 26, 2024.

Signed Scott L. Blake P.L.S. or R.C.E. No. 8489



### COUNTY SURVEYOR'S STATEMENT

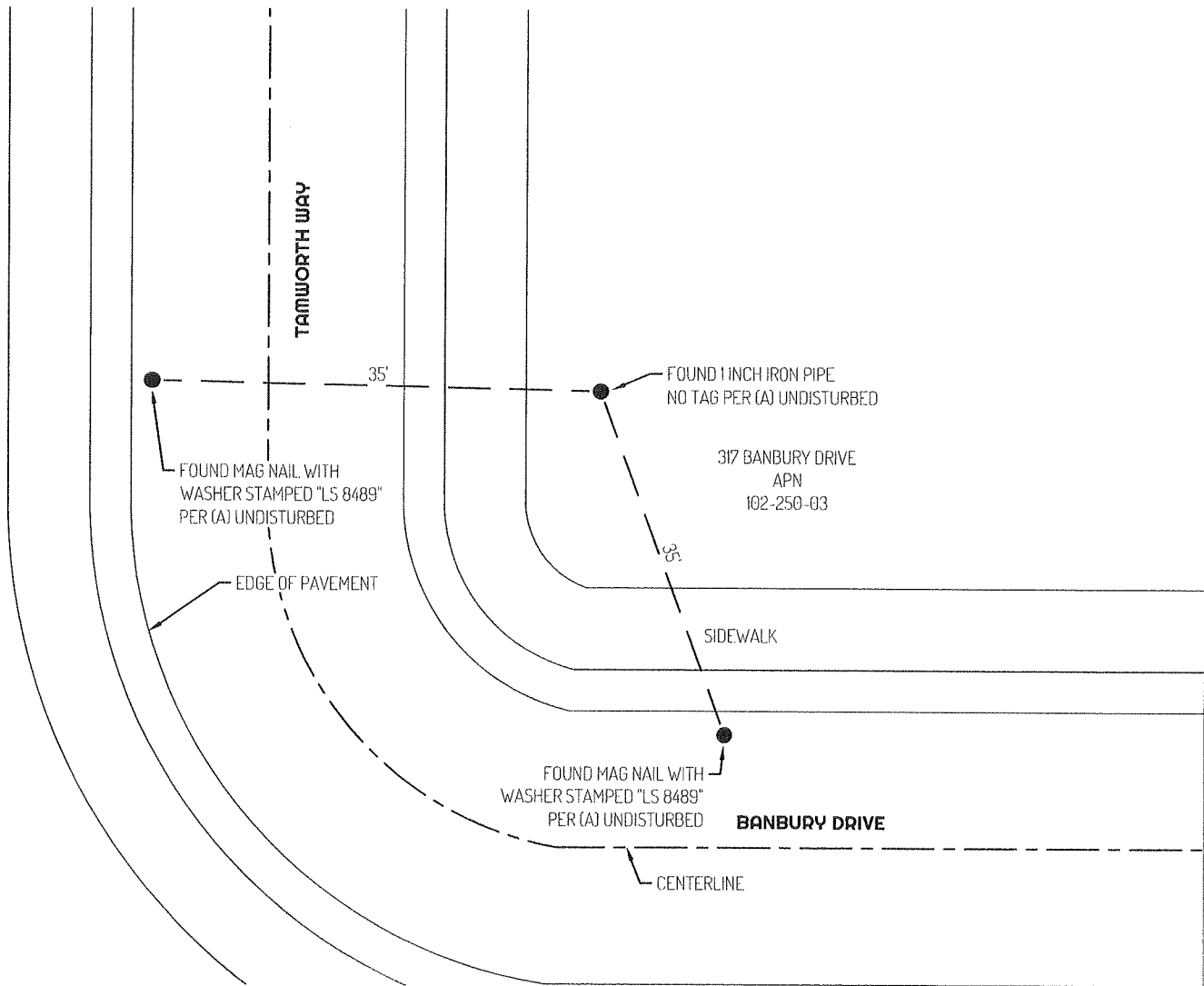
This Corner Record was received September 5, 2024 and examined and filed September 20, 2024.

Signed James E. Hart P.L.S. or R.C.E. No. 8657

Title County Surveyor

County Surveyor's Comment \_\_\_\_\_





**LEGEND**

- FOUND MONUMENT AS NOTED PER (A)
- 435 REFERENCE STREET ADDRESS
- APN ASSESSOR'S PARCEL NUMBER
- — — TIE LINE
- LOT LINE
- - - - CENTERLINE

**REFERENCE**

(A) CORNER RECORD 23-121, SAN JOAQUIN COUNTY SURVEYOR'S RECORDS

