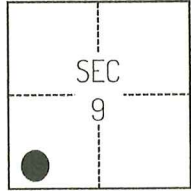


# CORNER RECORD

Agency Index CR-24-330  
Document Number \_\_\_\_\_

City of STOCKTON County of SAN JOAQUIN, California  
Brief Legal Description FOUND MONUMENTS SHOWN ON CORNER RECORD 24-222, SAN JOAQUIN COUNTY SURVEYOR'S RECORDS.



C.M. WEBER  
GRANT

### CORNER TYPE

- Government Corner
- Meander
- Rancho
- Control
- Property
- Other

Date of Survey May 16, 2023

### COORDINATES (Optional)

N. \_\_\_\_\_ E. \_\_\_\_\_

Elevation \_\_\_\_\_

Units  Metric  U.S. Survey Foot

Horizontal Datum \_\_\_\_\_

Zone \_\_\_\_\_ Epoch Date \_\_\_\_\_

Vertical Datum \_\_\_\_\_

Complies with Public Resources Code §§8801-8819

Complies with Public Resources Code §§8890-8902

PLS Act Ref.:  8765(d)  8771  8773  Other:

Corner/Monument:  Left as found  Established  Rebuilt  Pre-Construction

Found and tagged  Reestablished  Referenced  Post-Construction

Narrative of corner identified and monument as found, set, reset, replaced, or removed:

See sheet #2 for description(s):

### SURVEYOR'S STATEMENT

This Corner Record was prepared by me or under my direction in conformance with  
the Professional Land Surveyors' Act on July 17, 2024.

Signed [Signature] P.L.S. or R.C.E. No. 8489



### COUNTY SURVEYOR'S STATEMENT

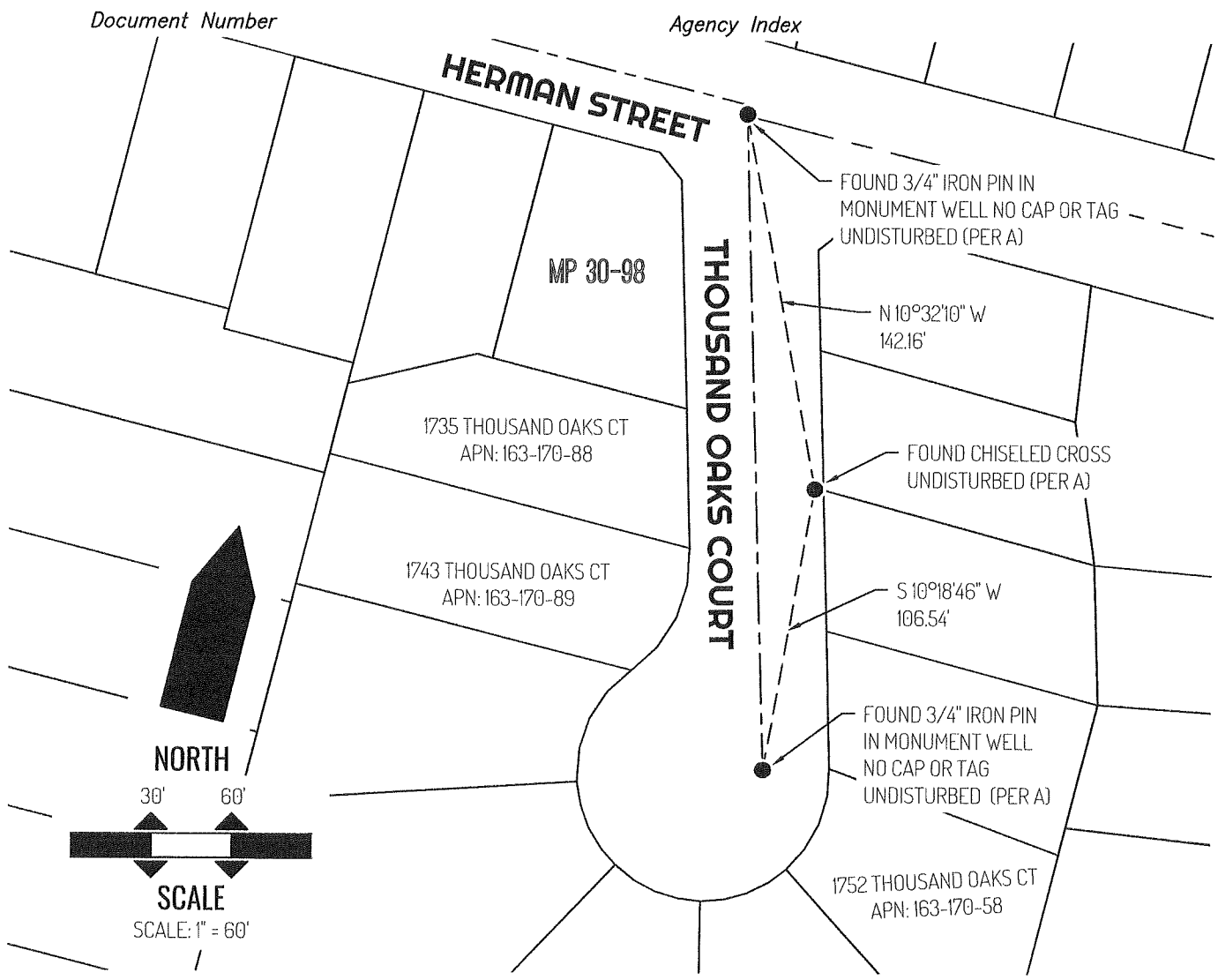
This Corner Record was received September 5, 2024  
and examined and filed September 20, 2024.

Signed James E. Hart P.L.S. or R.C.E. No. 8657

Title County Surveyor

County Surveyor's Comment





**LEGEND**

●	FOUND MONUMENT UNDISTURBED AS NOTED
1752	REFERENCE STREET ADDRESS
MP	MAPS AND PLATS, SAN JOAQUIN COUNTY RECORDS
APN	TAX ASSESSOR PARCEL NUMBER
---	TIE LINE
---	LOT LINE
---	RIGHT-OF-WAY CENTERLINE

**REFERENCE**

(A) CORNER RECORD 24-222, SAN JOAQUIN COUNTY SURVEYOR'S RECORDS