

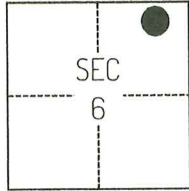
# CORNER RECORD

Agency Index CR-24-329  
Document Number \_\_\_\_\_

City of MANTECA County of SAN JOAQUIN, California  
Brief Legal Description FOUND MONUMENT SHOWN ON CORNER RECORD 24-206, SAN JOAQUIN COUNTY SURVEYOR'S RECORDS.

### CORNER TYPE

### COORDINATES (Optional)



T2S/R7E

- Government Corner
- Meander
- Rancho
- Control
- Property
- Other

Date of Survey February 15, 2024

N. \_\_\_\_\_ E. \_\_\_\_\_

Elevation \_\_\_\_\_

Units  Metric  U.S. Survey Foot

Horizontal Datum \_\_\_\_\_

Zone \_\_\_\_\_ Epoch Date \_\_\_\_\_

Vertical Datum \_\_\_\_\_

Complies with Public Resources Code §§8801-8819

Complies with Public Resources Code §§8890-8902

PLS Act Ref.:  8765(d)  8771  8773  Other:

Corner/Monument:  Left as found  Established  Rebuilt  Pre-Construction

Found and tagged  Reestablished  Referenced  Post-Construction

Narrative of corner identified and monument as found, set, reset, replaced, or removed:

See sheet #2 for description(s):

### SURVEYOR'S STATEMENT

This Corner Record was prepared by me or under my direction in conformance with  
the Professional Land Surveyors' Act on June 9, 2024

Signed [Signature] P.L.S. or R.C.E. No. 8489



### COUNTY SURVEYOR'S STATEMENT

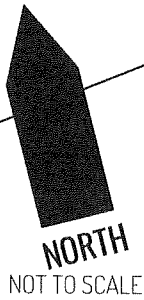
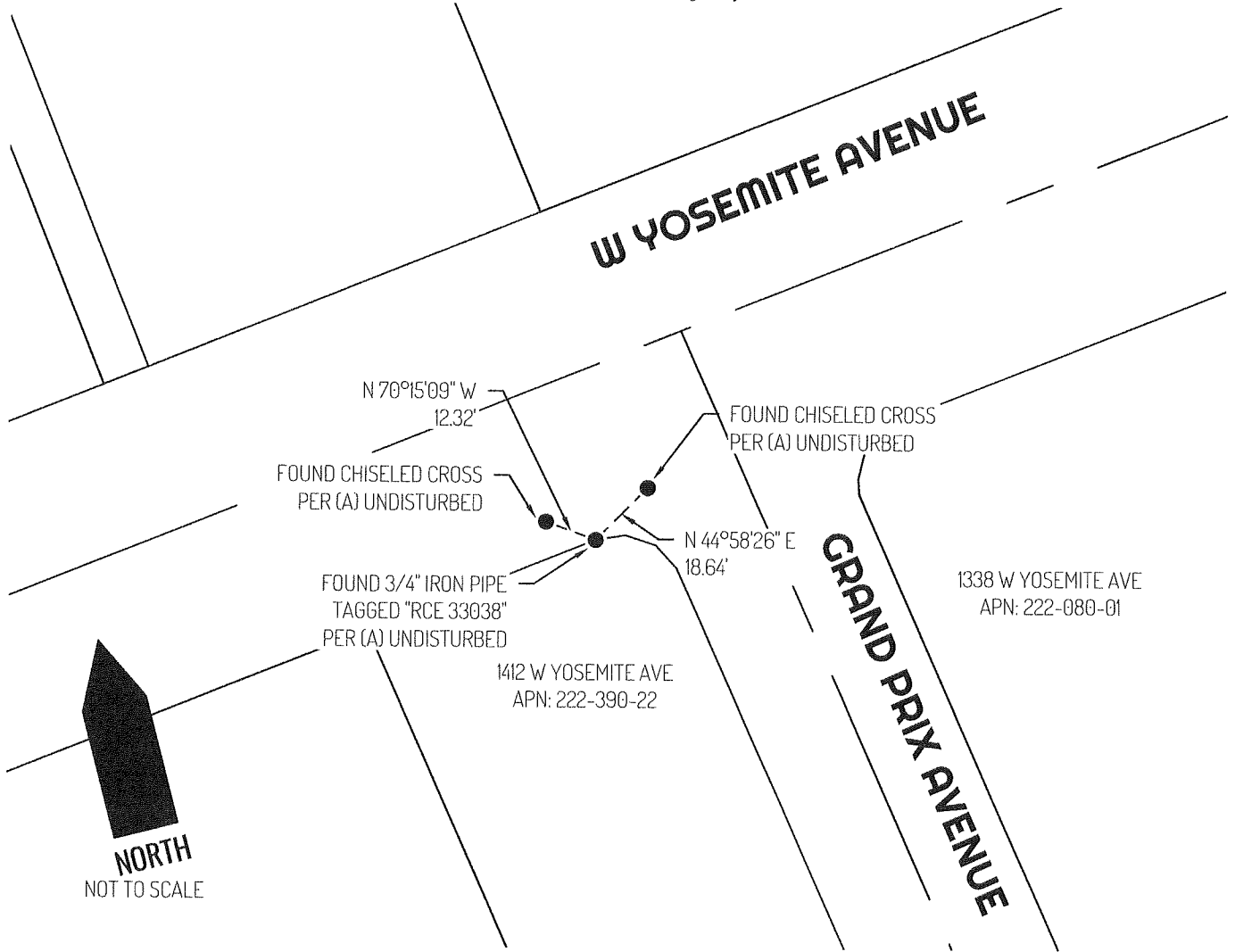
This Corner Record was received September 5, 2024  
and examined and filed September 20, 2024

Signed [Signature] P.L.S. or R.C.E. No. 8657

Title County Surveyor

County Surveyor's Comment





**LEGEND**

●	FOUND MONUMENT AS NOTED PER (A)
1338	REFERENCE STREET ADDRESS
APN	TAX ASSESSOR PARCEL NUMBER
---	TIE LINE
—	LOT LINE
— — —	RIGHT-OF-WAY CENTERLINE

**REFERENCE**

(A) CORNER RECORD 24-206, SAN JOAQUIN COUNTY SURVEYOR'S RECORDS