

CORNER RECORD

Agency Index CR-24-327

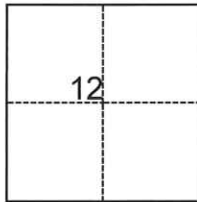
Document Number _____

City of Lodi County of San Joaquin, California

Brief Legal Description LOT 2, M.&P. 11-23

CORNER TYPE

COORDINATES (Optional)



- Government Corner Control
 Meander Property
 Rancho Other

N. _____ E. _____

Elevation _____

Units Metric U.S. Survey Foot

Horizontal Datum _____

Zone _____ Epoch Date _____

Vertical Datum _____

Complies with Public Resources Code §§8801-8819

Complies with Public Resources Code §§8890-8902

T.3N., R.6E., M.D.B.&M.

PLS Act Ref.: 8765(d) 8771 8773 Other:

Corner/ Left as found Established Rebuilt Pre-Construction

Monument: Found and tagged Reestablished Referenced Post-Construction

Narrative of corner identified and monument as found, set, reset, replaced, or removed:

See sheet #2 for description(s):

SURVEYOR'S STATEMENT

This Corner Record was prepared by me or under my direction in conformance with

the Professional Land Surveyors' Act on

Signed  P.L.S. or R.C.E. No. 25835



COUNTY SURVEYOR'S STATEMENT

This Corner Record was received August 28, 2024

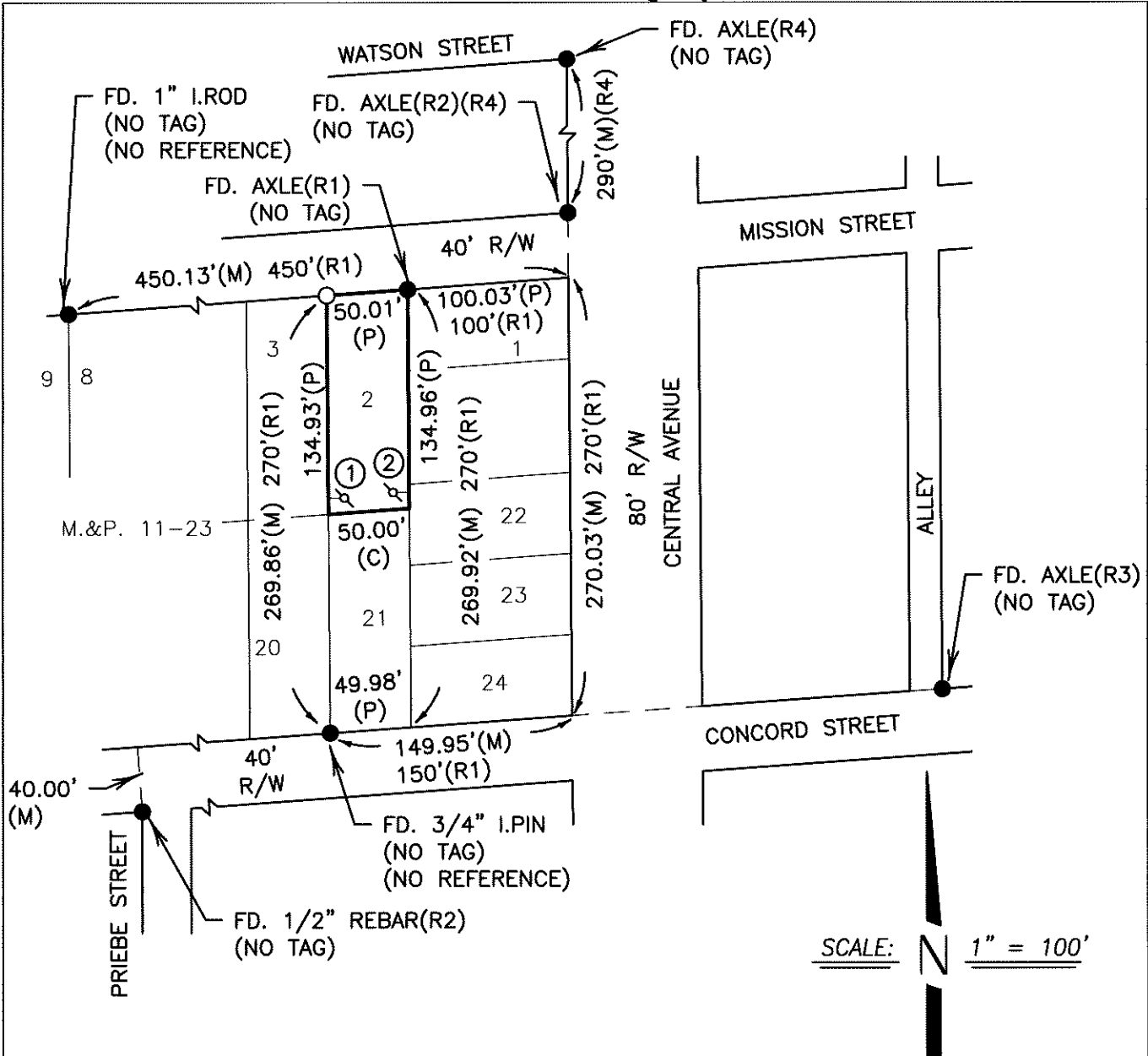
and examined and filed September 13, 2024

Signed  P.L.S. or R.C.E. No. 8657

Title County Surveyor

County Surveyor's Comment





WITNESS CORNERS:

- ① SET 3/4" X 30" IRON ROD, CAPPED RCE 25835
1.00' NORTH AND 1.00' EAST.
- ② SET 3/4" X 30" IRON ROD, CAPPED RCE 25835
1.00' NORTH AND 1.00' WEST.

REFERENCES:

- (R1) M.&P. 11-23, S.J.C.R.
- (R2) P.M. 8-50, S.J.C.R.
- (R3) P.M. 12-154, S.J.C.R.
- (R4) M.&P. 11-69, S.J.C.R.

LEGEND

- FD. FOUND
- R/W RIGHT OF WAY
- (P) PRORATED
- S.J.C.R. SAN JOAQUIN COUNTY RECORDS
- (M) MEASURED
- (C) CALCULATED
- S.J.CO. SAN JOAQUIN COUNTY
- M.&P. MAPS AND PLATS
- P.M. PARCEL MAP
- I.PIN IRON PIN
- I.ROD IRON ROD
- FD. MONUMENT AS NOTED
- ⊕ SET WITNESS CORNER
- SET 3/4" X 30" IRON ROD, CAPPED RCE 25835.