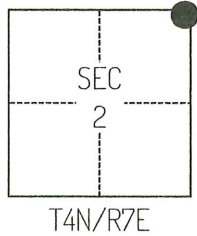


CORNER RECORD

Agency Index CR-24-326
Document Number _____

City of _____ County of SAN JOAQUIN, California

Brief Legal Description FOUND MONUMENTS SHOWN ON CORNER RECORD 24-180, SAN JOAQUIN COUNTY SURVEYOR'S RECORDS.



CORNER TYPE

- Government Corner Control
 Meander Property
 Rancho Other

Date of Survey March 20, 2024

COORDINATES (Optional)

N. _____ E. _____

Elevation _____

Units Metric U.S. Survey Foot

Horizontal Datum _____

Zone _____ Epoch Date _____

Vertical Datum _____

Complies with Public Resources Code §§8801-8819

Complies with Public Resources Code §§8890-8902

PLS Act Ref.: 8765(d) 8771 8773 Other:

Corner/Monument: Left as found Established Rebuilt Pre-Construction

Found and tagged Reestablished Referenced Post-Construction

Narrative of corner identified and monument as found, set, reset, replaced, or removed:

See sheet #2 for description(s):

SURVEYOR'S STATEMENT

This Corner Record was prepared by me or under my direction in conformance with the Professional Land Surveyors' Act on April 15, 2024.

Signed Scott L. Blake P.L.S. or R.C.E. No. 8489



COUNTY SURVEYOR'S STATEMENT

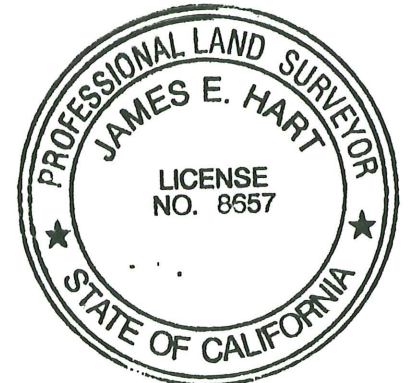
This Corner Record was received August 22, 2024

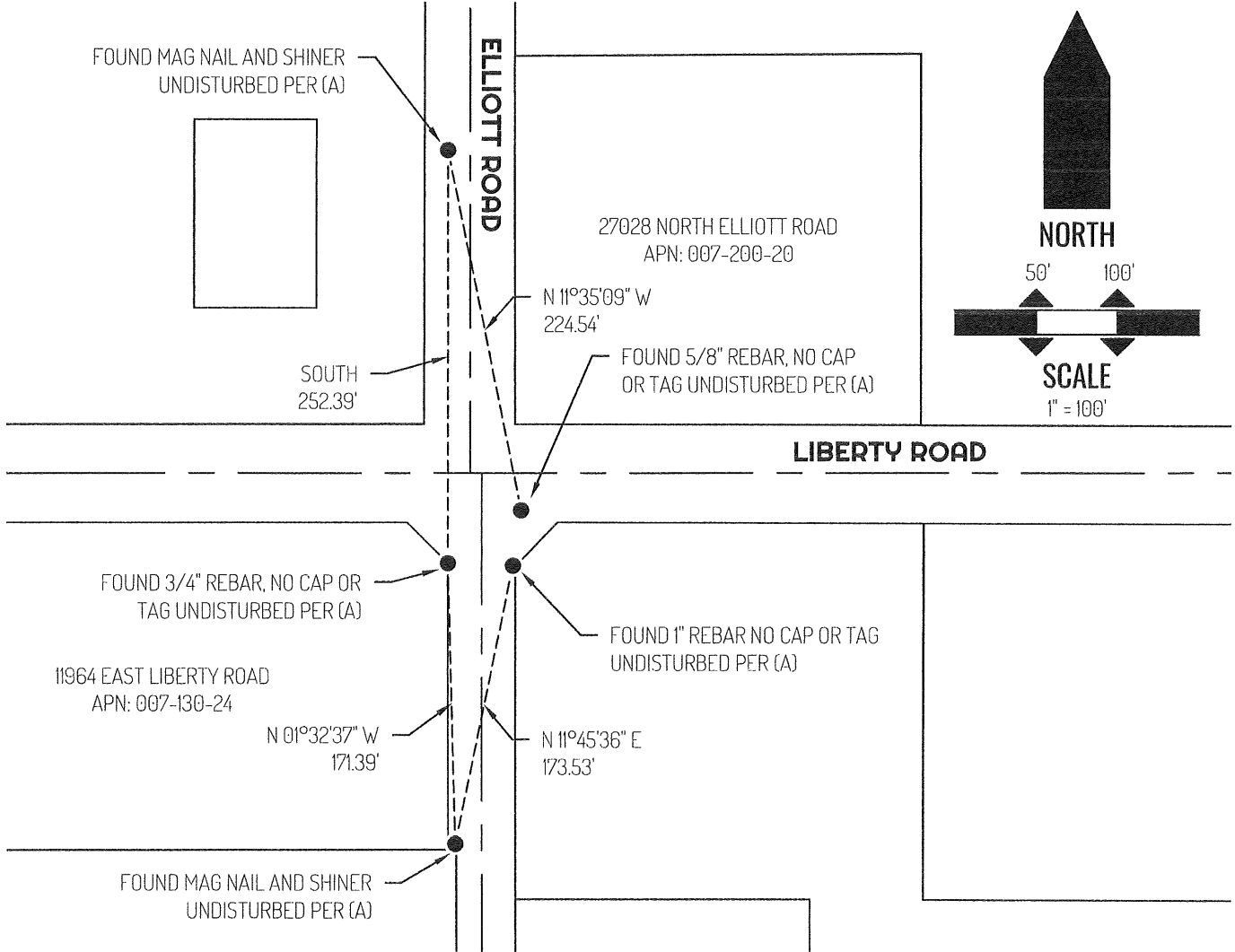
and examined and filed September 6, 2024.

Signed James E. Hart P.L.S. or R.C.E. No. 8657

Title County Surveyor

County Surveyor's Comment





LEGEND

●	FOUND MONUMENT AS NOTED PER (A)
11964	REFERENCE STREET ADDRESS
APN	TAX ASSESSOR PARCEL NUMBER
—————	LOT LINE
————— —————	RIGHT-OF-WAY CENTERLINE
- - - - -	TIE LINE

REFERENCE

(A) CORNER RECORD 24-180, SAN JOAQUIN COUNTY SURVEYOR'S RECORDS