

CORNER RECORD

Agency Index CR-24-320

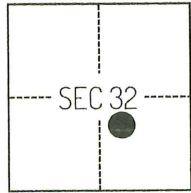
Document Number _____

City of _____ County of SAN JOAQUIN, California

Brief Legal Description PORTION OF SECTION 32 TOWNSHIP 2 NORTH RANGE 6 EAST.

CORNER TYPE

COORDINATES (Optional)



T2N/R6E

- Government Corner Control
 Meander Property
 Rancho Other

Date of Survey December 21, 2022

N. _____ E. _____

Elevation _____

Units Metric U.S. Survey Foot

Horizontal Datum _____

Zone _____ Epoch Date _____

Vertical Datum _____

Complies with Public Resources Code §§8801-8819

Complies with Public Resources Code §§8890-8902

PLS Act Ref.: 8765(d) 8771 8773 Other:

Corner/Monument: Left as found Established Rebuilt Pre-Construction

Found and tagged Reestablished Referenced Post-Construction

Narrative of corner identified and monument as found, set, reset, replaced, or removed:

See sheet #2 for description(s):

SURVEYOR'S STATEMENT

This Corner Record was prepared by me or under my direction in conformance with the Professional Land Surveyors' Act on March 12, 2024.

Signed Scott L. Blake P.L.S. or R.C.E. No. 8489



COUNTY SURVEYOR'S STATEMENT

This Corner Record was received August 22, 2024

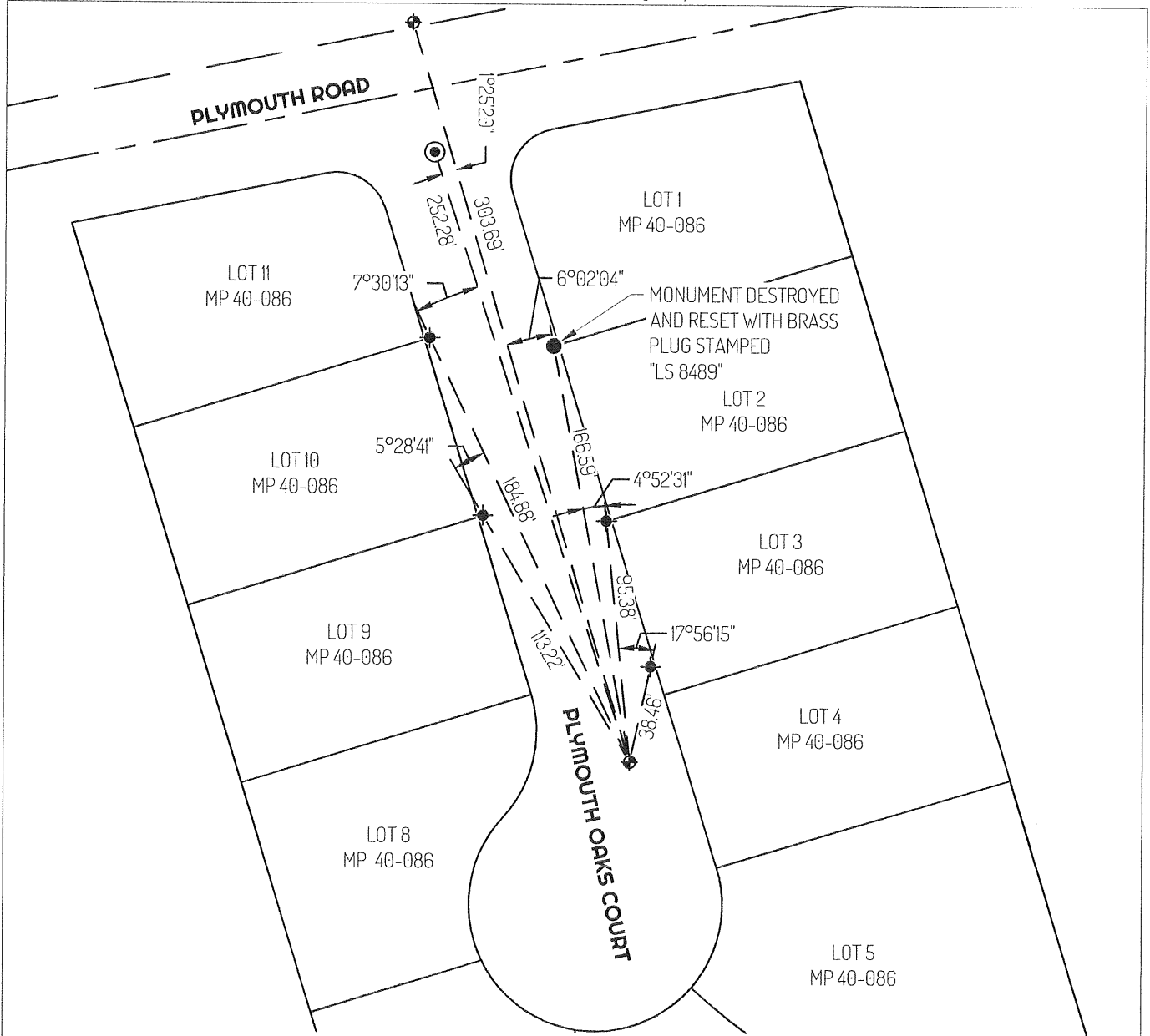
and examined and filed September 6, 2024.

Signed James E. Hart P.L.S. or R.C.E. No. 8657

Title County Surveyor

County Surveyor's Comment _____





LEGEND

- ⊕ FOUND CUT CHISELED CROSS UNDISTURBED PER (A)
- ⊕ FOUND MAG NAIL UNDISTURBED PER (A)
- ⊙ FOUND 3/4" REBAR TAGGED L.S. 4479 IN MON BOX UNDISTURBED PER (A)
- SET MONUMENT AS NOTED
- MP MAPS AND PLATS, SAN JOAQUIN COUNTY RECORDS

REFERENCE

(A) CORNER RECORD 22-269, SAN JOAQUIN COUNTY SURVEYOR'S RECORDS

LINETYPES

- — — — — CENTERLINE
- — — — — TIE LINE
- — — — — SIDELINE
- — — — — PROPERTY LINE

