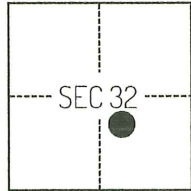


CORNER RECORD

Agency Index CR-24-319
Document Number _____

City of _____ County of SAN JOAQUIN, California
Brief Legal Description PORTION OF SECTION 32 TOWNSHIP 2 NORTH RANGE 6 EAST.



T2N/R6E

CORNER TYPE

- Government Corner
- Meander
- Rancho
- Control
- Property
- Other

Date of Survey December 21, 2022

COORDINATES (Optional)

N. _____ E. _____
 Elevation _____
 Units Metric U.S. Survey Foot
 Horizontal Datum _____
 Zone _____ Epoch Date _____
 Vertical Datum _____
 Complies with Public Resources Code §§8801-8819
 Complies with Public Resources Code §§8890-8902

PLS Act Ref.: 8765(d) 8771 8773 Other:
 Corner/Monument: Left as found Established Rebuilt Pre-Construction
 Found and tagged Reestablished Referenced Post-Construction

Narrative of corner identified and monument as found, set, reset, replaced, or removed:
 See sheet #2 for description(s):

SURVEYOR'S STATEMENT

This Corner Record was prepared by me or under my direction in conformance with
 the Professional Land Surveyors' Act on March 12, 2024
 Signed Scott L. Blake P.L.S. or R.C.E. No. 8489

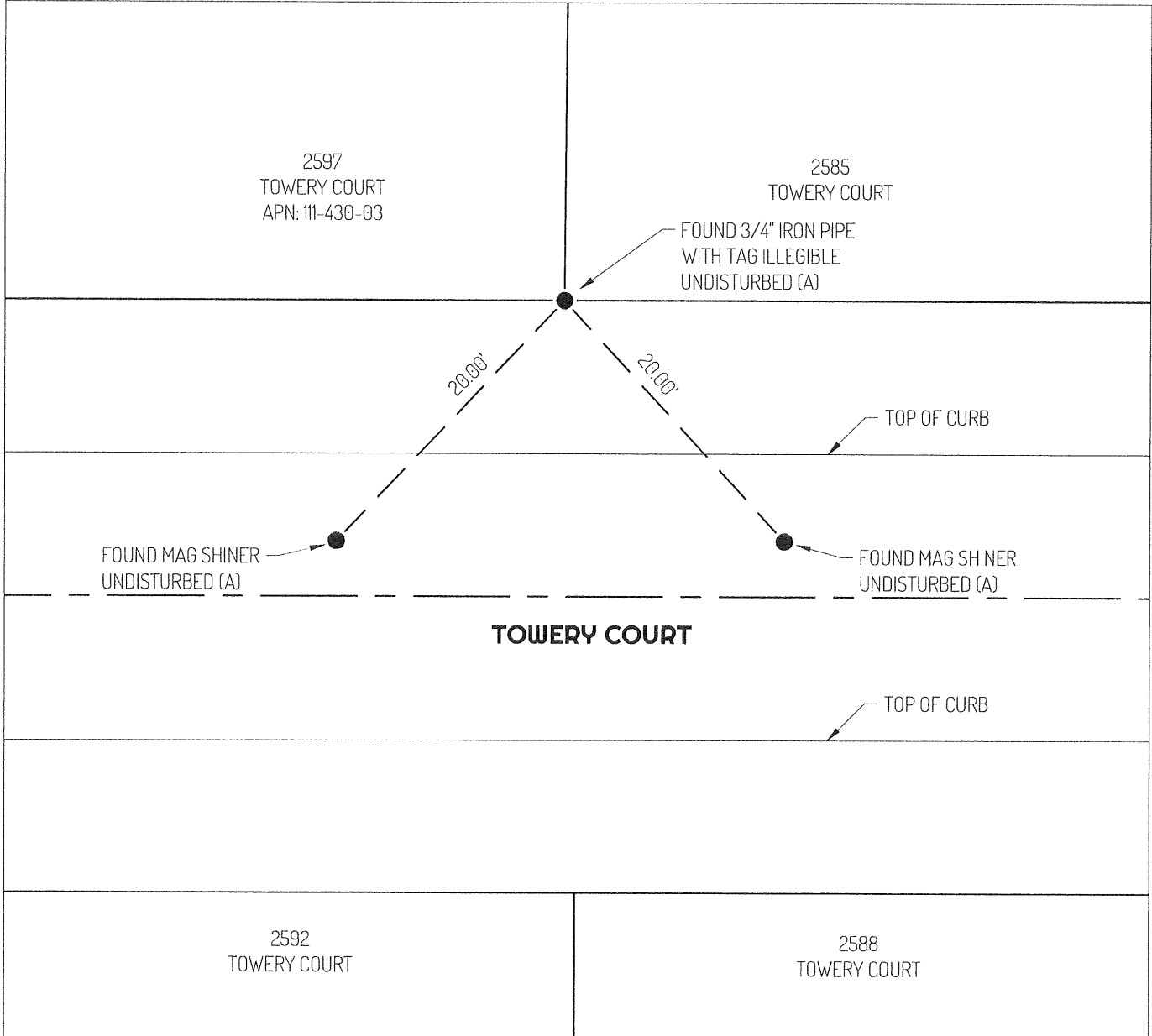


COUNTY SURVEYOR'S STATEMENT

This Corner Record was received August 22, 2024
 and examined and filed September 6, 2024
 Signed James E. Hart P.L.S. or R.C.E. No. 8657
 Title County Surveyor



County Surveyor's Comment



LEGEND

- FOUND MONUMENT AS NOTED PER (A)
- 2597 REFERENCE STREET ADDRESS
- APN ASSESSOR'S PARCEL NUMBER

REFERENCE

(A) CORNER RECORD 22-268, SAN JOAQUIN COUNTY SURVEYOR'S RECORDS

LINETYPES

- — — — — CENTERLINE
- - - - - TIE LINE
- ===== PROPERTY LINE
- TOP OF CURB

