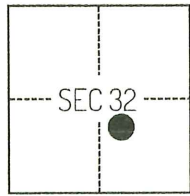


# CORNER RECORD

Agency Index CR-24-318  
 Document Number \_\_\_\_\_

City of \_\_\_\_\_ County of SAN JOAQUIN, California  
 Brief Legal Description PORTION OF SECTION 32 TOWNSHIP 2 NORTH RANGE 6 EAST.



T2N/R6E

### CORNER TYPE

- Government Corner     Control  
 Meander                     Property  
 Rancho                          Other

Date of Survey December 21, 2022

### COORDINATES (Optional)

N. \_\_\_\_\_ E. \_\_\_\_\_  
 Elevation \_\_\_\_\_  
 Units     Metric             U.S. Survey Foot  
 Horizontal Datum \_\_\_\_\_  
 Zone \_\_\_\_\_ Epoch Date \_\_\_\_\_  
 Vertical Datum \_\_\_\_\_  
 Complies with Public Resources Code §§8801-8819  
 Complies with Public Resources Code §§8890-8902

PLS Act Ref.:     8765(d)             8771             8773             Other:  
 Corner/  
 Monument:     Left as found             Established             Rebuilt             Pre-Construction  
                    Found and tagged             Reestablished             Referenced             Post-Construction

Narrative of corner identified and monument as found, set, reset, replaced, or removed:  
 See sheet #2 for description(s):

### SURVEYOR'S STATEMENT

This Corner Record was prepared by me or under my direction in conformance with  
 the Professional Land Surveyors' Act on March 12, 2024  
 Signed Scott L. Blake P.L.S. or R.C.E. No. 8489

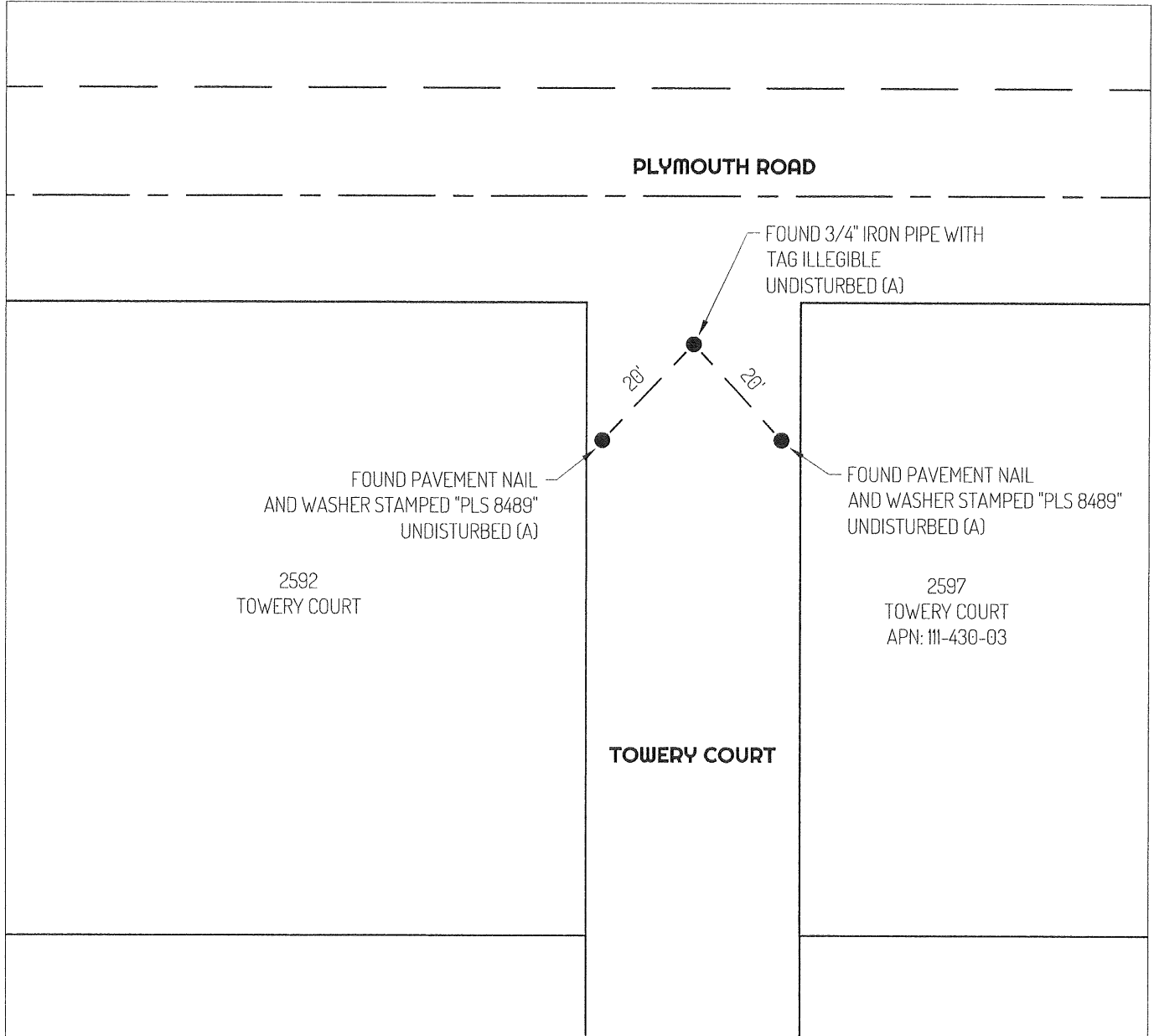


### COUNTY SURVEYOR'S STATEMENT

This Corner Record was received August 22, 2024  
 and examined and filed September 6, 2024  
 Signed James E. Hart P.L.S. or R.C.E. No. 8657  
 Title County Surveyor



County Surveyor's Comment



**LEGEND**

- FOUND MONUMENT AS NOTED PER (A)
- 2592 REFERENCE STREET ADDRESS
- APN ASSESSOR'S PARCEL NUMBER

**REFERENCE**

(A) CORNER RECORD 22-267, SAN JOAQUIN COUNTY SURVEYOR'S RECORDS

**LINETYPES**

- — — CENTERLINE
- - - TIE LINE
- — — SIDELINE
- ===== PROPERTY LINE



**SCALE**  
NOT TO SCALE