

# CORNER RECORD

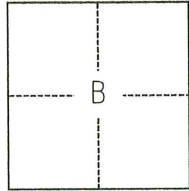
Agency Index CR-24-317  
Document Number \_\_\_\_\_

City of STOCKTON County of SAN JOAQUIN, California

Brief Legal Description FOUND MONUMENTS SHOWN ON CORNER RECORD 24-177, SAN JOAQUIN COUNTY SURVEYOR'S RECORDS.

### CORNER TYPE

### COORDINATES (Optional)



C.M. WEBER GRANT

- Government Corner
- Meander
- Rancho
- Control
- Property
- Other

Date of Survey April 17, 2023

N. \_\_\_\_\_ E. \_\_\_\_\_

Elevation \_\_\_\_\_

Units  Metric  U.S. Survey Foot

Horizontal Datum \_\_\_\_\_

Zone \_\_\_\_\_ Epoch Date \_\_\_\_\_

Vertical Datum \_\_\_\_\_

Complies with Public Resources Code §§8801-8819

Complies with Public Resources Code §§8890-8902

PLS Act Ref.:  8765(d)  8771  8773  Other:

Corner/Monument:  Left as found  Established  Rebuilt  Pre-Construction

Found and tagged  Reestablished  Referenced  Post-Construction

Narrative of corner identified and monument as found, set, reset, replaced, or removed:

See sheet #2 for description(s):

### SURVEYOR'S STATEMENT

This Corner Record was prepared by me or under my direction in conformance with the Professional Land Surveyors' Act on July 29, 2023.

Signed [Signature] P.L.S. or R.C.E. No. 8489



### COUNTY SURVEYOR'S STATEMENT

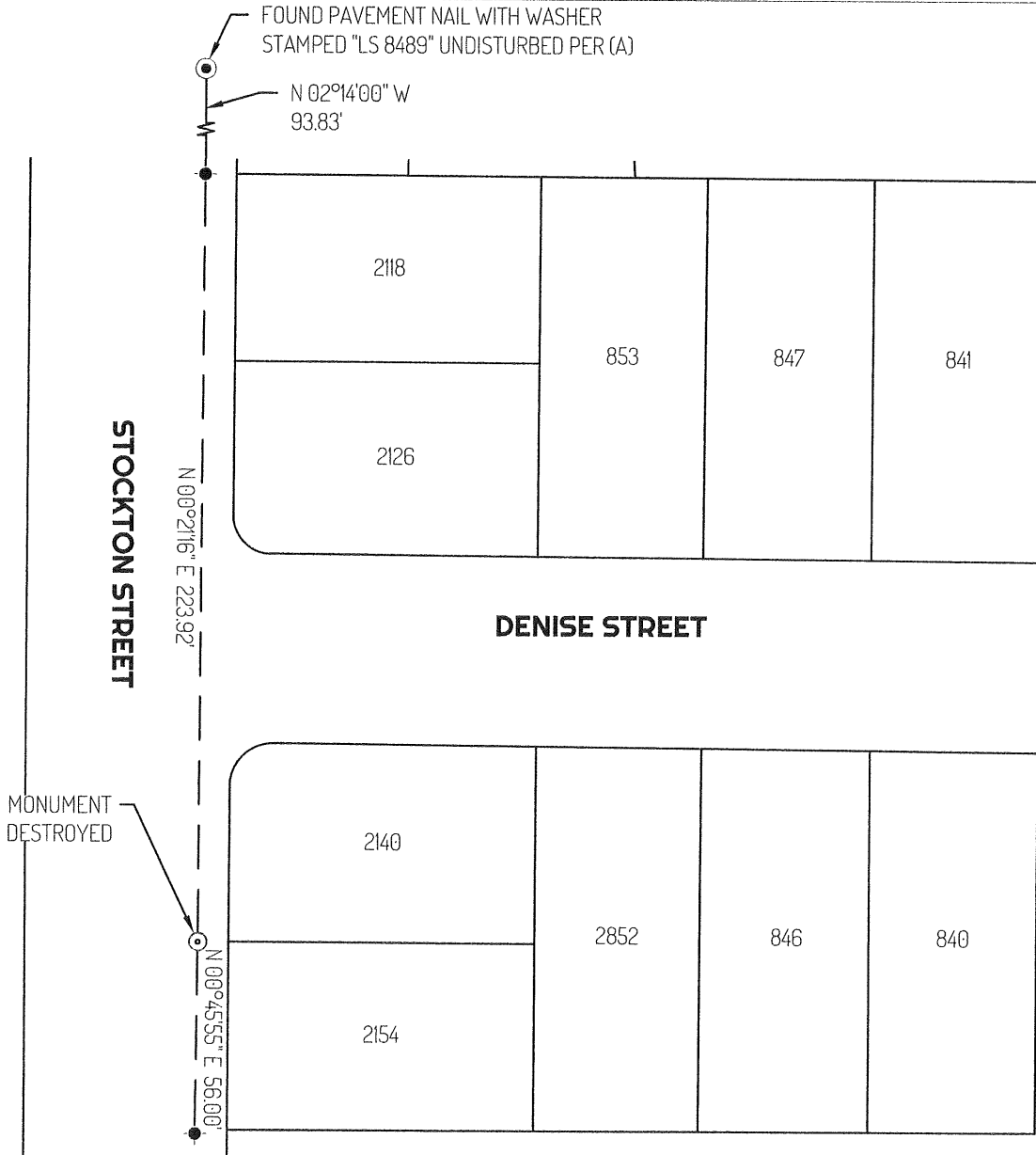
This Corner Record was received August 22, 2024 and examined and filed September 6, 2024.

Signed James E. Hart P.L.S. or R.C.E. No. 8657

Title County Surveyor

County Surveyor's Comment \_\_\_\_\_



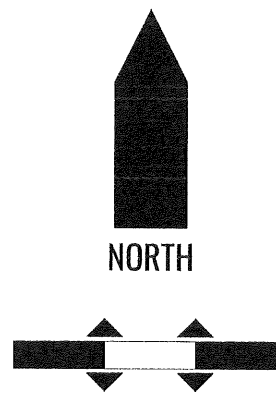


**LEGEND**

- FOUND MONUMENT AS NOTED
- FOUND CHISELED CROSS PER (A) UNDISTURBED
- MONUMENT DESTROYED AND RESET WITH BRASS PLUG STAMPED "LS 8489"
- 435 REFERENCE STREET ADDRESS
- — TIE LINE
- LOT LINE

**REFERENCE(S)**

(A) CORNER RECORD 24-177, SAN JOAQUIN COUNTY SURVEYOR'S RECORDS



**NORTH**

**SCALE**

NOT TO SCALE  
BASIS-OF-BEARINGS IS ASSUMED