

CORNER RECORD

Agency Index CR-24-314

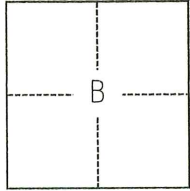
Document Number _____

City of STOCKTON County of SAN JOAQUIN, California

Brief Legal Description FOUND MONUMENTS SHOWN ON CORNER RECORD 24-174, SAN JOAQUIN COUNTY SURVEYOR'S RECORDS.

CORNER TYPE

COORDINATES (Optional)



C.M. WEBER GRANT

- Government Corner
- Meander
- Rancho
- Control
- Property
- Other

Date of Survey April 17, 2023

N. _____ E. _____

Elevation _____

Units Metric U.S. Survey Foot

Horizontal Datum _____

Zone _____ Epoch Date _____

Vertical Datum _____

Complies with Public Resources Code §§8801-8819

Complies with Public Resources Code §§8890-8902

PLS Act Ref.: 8765(d) 8771 8773 Other:

Corner/Monument: Left as found Established Rebuilt Pre-Construction

Found and tagged Reestablished Referenced Post-Construction

Narrative of corner identified and monument as found, set, reset, replaced, or removed:

See sheet #2 for description(s):

SURVEYOR'S STATEMENT

This Corner Record was prepared by me or under my direction in conformance with the Professional Land Surveyors' Act on July 29, 2023.

Signed [Signature] P.L.S. or R.C.E. No. 8489



COUNTY SURVEYOR'S STATEMENT

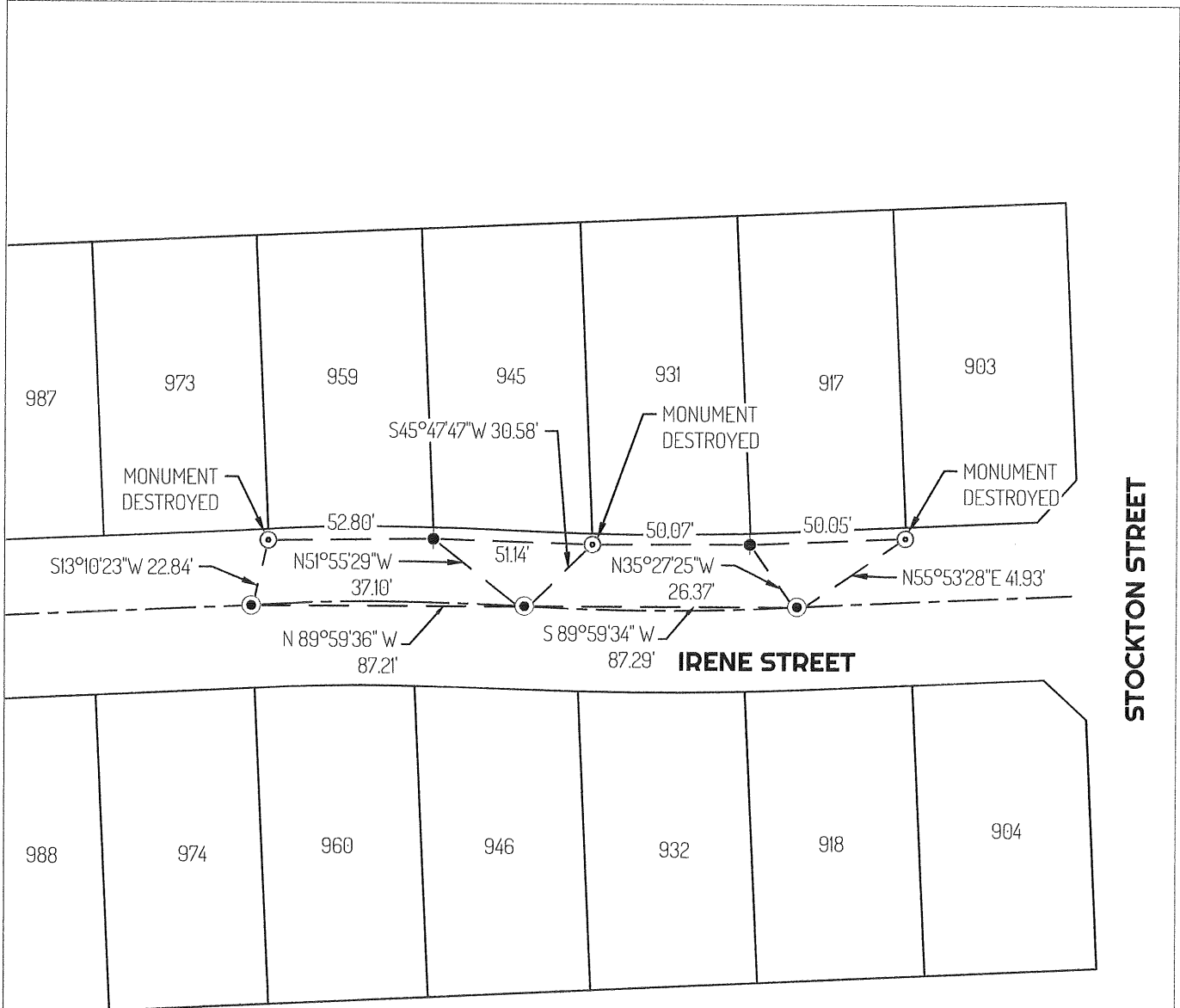
This Corner Record was received August 22, 2024 and examined and filed September 6, 2024.

Signed James E. Hart P.L.S. or R.C.E. No. 8657

Title County Surveyor

County Surveyor's Comment



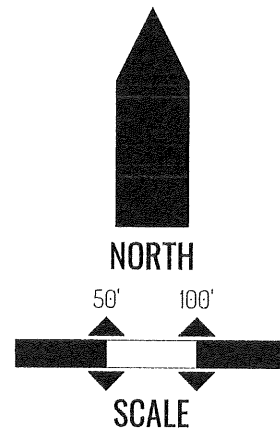


LEGEND

- FOUND 3/4" IRON PIN IN WELL LABELED "RCE 14269" PER (A) UNDISTURBED
- ⊙— MONUMENT DESTROYED, RESET BRASS PLUG STAMPED "LS 8489"
- FOUND CHISELED CROSS PER (A) UNDISTURBED
- 435 REFERENCE STREET ADDRESS
- APN ASSESSOR'S PARCEL NUMBER
- — TIE LINE
- LOT LINE
- - - CENTERLINE

REFERENCE(S)

- (A) CORNER RECORD 24-174, SAN JOAQUIN COUNTY SURVEYOR'S RECORDS



SCALE
DRAWING SCALE: 1"=50'
BASIS-OF-BEARINGS IS ASSUMED