

CORNER RECORD

Agency Index CR-24-312

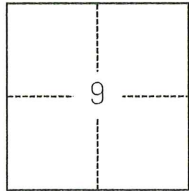
Document Number _____

City of STOCKTON County of SAN JOAQUIN, California

Brief Legal Description FOUND MONUMENTS SHOWN ON CORNER RECORD 24-172, SAN JOAQUIN COUNTY SURVEYOR'S RECORDS.

CORNER TYPE

COORDINATES (Optional)



C.M. WEBER GRANT

- Government Corner Control
 Meander Property
 Rancho Other

Date of Survey April 17, 2023

N. _____ E. _____

Elevation _____

Units Metric U.S. Survey Foot

Horizontal Datum _____

Zone _____ Epoch Date _____

Vertical Datum _____

Complies with Public Resources Code §§8801-8819

Complies with Public Resources Code §§8890-8902

PLS Act Ref.: 8765(d) 8771 8773 Other:

Corner/Monument: Left as found Established Rebuilt Pre-Construction

Found and tagged Reestablished Referenced Post-Construction

Narrative of corner identified and monument as found, set, reset, replaced, or removed:

See sheet #2 for description(s):

SURVEYOR'S STATEMENT

This Corner Record was prepared by me or under my direction in conformance with

the Professional Land Surveyors' Act on July 29, 2023

Signed *Scott L. Blake* P.L.S. or R.C.E. No. 8489



COUNTY SURVEYOR'S STATEMENT

This Corner Record was received August 22, 2024

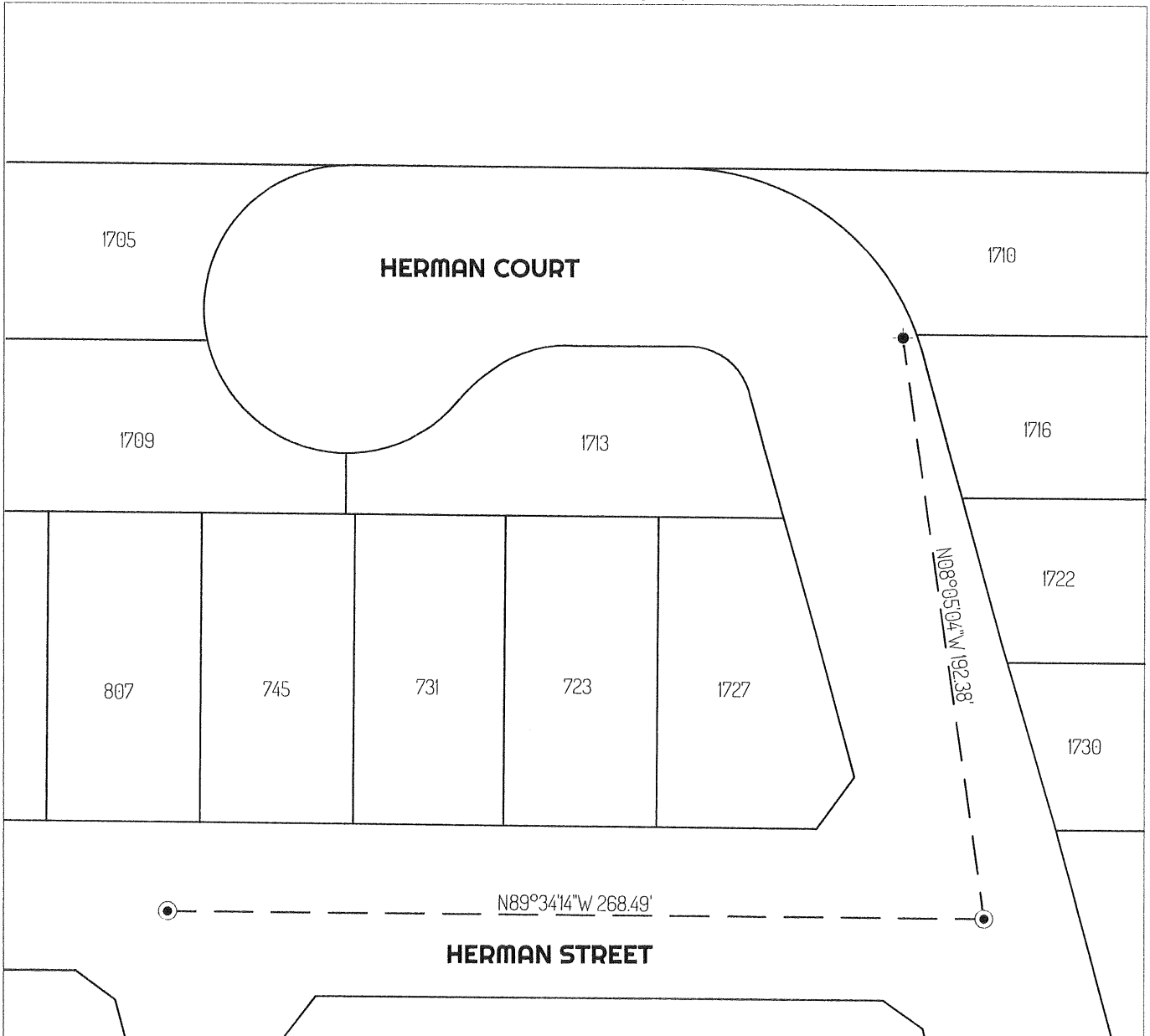
and examined and filed September 6, 2024

Signed *James E. Hart* P.L.S. or R.C.E. No. 8657

Title County Surveyor

County Surveyor's Comment



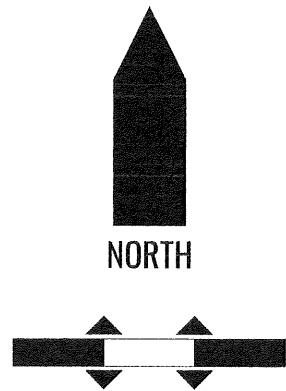


LEGEND

- (●) — FOUND 3/4" IRON PIN IN WELL PER (A) UNDISTURBED
- (●) — FOUND CHISELED CROSS PER (A) UNDISTURBED
- 435 REFERENCE STREET ADDRESS
- APN ASSESSOR'S PARCEL NUMBER
- — TIE LINE
- LOT LINE

REFERENCE(S)

- (A) CORNER RECORD 24-172, SAN JOAQUIN COUNTY SURVEYOR'S RECORDS



NOT TO SCALE
BASIS-OF-BEARINGS IS ASSUMED