

CORNER RECORD

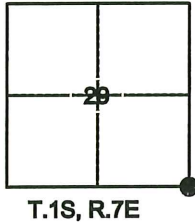
Agency Index: CR-24-304

Document Number: _____

City of MANTECA

County of SAN JOAQUIN, California

Brief Legal Description SOUTHEAST CORNER SECTION 29, TOWNSHIP 1 SOUTH, RANGE 7 EAST, MOUNT DIABLO BASE AND MERIDIAN, AT THE INTERSECTION OF LOUISE AVENUE AND MAIN STREET.



CORNER TYPE

- Government Corner
- Meander
- Rancho
- Control
- Property
- Other

Date of Survey 06-28-2024

COORDINATES (Optional)

N. _____ E. _____

Elevation _____

Units Metric U.S. Survey Foot

Horizontal Datum _____

Zone _____ Epoch Date _____

Vertical Datum _____

Complies with Public Resources Code SS8801-8819

Complies with Public Resources Code SS8890-8902

PLS Act Ref: 8765(d) 8771 8773 Other:

Corner/Monument: Left as found Established Rebuilt Pre-Construction
 Found and Tagged Reestablished Referenced Post-Construction

Narrative of corner identified and monument as found, set, reset, replaced, or removed:

See sheet #2 for description(s):

FOUND ONE (1) 3/4" IRON PIN, NOT TAGGED, IN A MONUMENT WELL AT THE INTERSECTION OF LOUISE AVENUE AND MAIN STREET, BEING AT THE SOUTHEAST CORNER OF SECTION 29, T.1S., R.7E., M.D.B.&M. SET FOUR (4) CONCRETE NAILS WITH BRASS TAGS, MARKED "L.S. 6953", AS WITNESS CORNERS. ALL AS SHOWN ON PAGE 2.

SURVEYOR'S STATEMENT

This Corner Record was prepared by me or under my direction in conformance with the Land Surveyors' Act on JULY 1, 2024,

Signed [Signature] P.L.S. or R.C.E. Number 6953



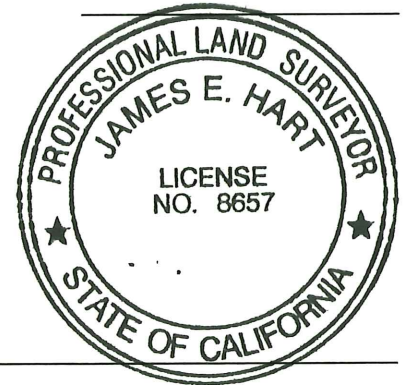
COUNTY SURVEYOR'S STATEMENT

This Corner Record was received August 13, 2024

and examined and filed September 6, 2024

Signed [Signature] P.L.S. or R.C.E. No: 8657

Title County Surveyor



County Surveyor's Comment _____

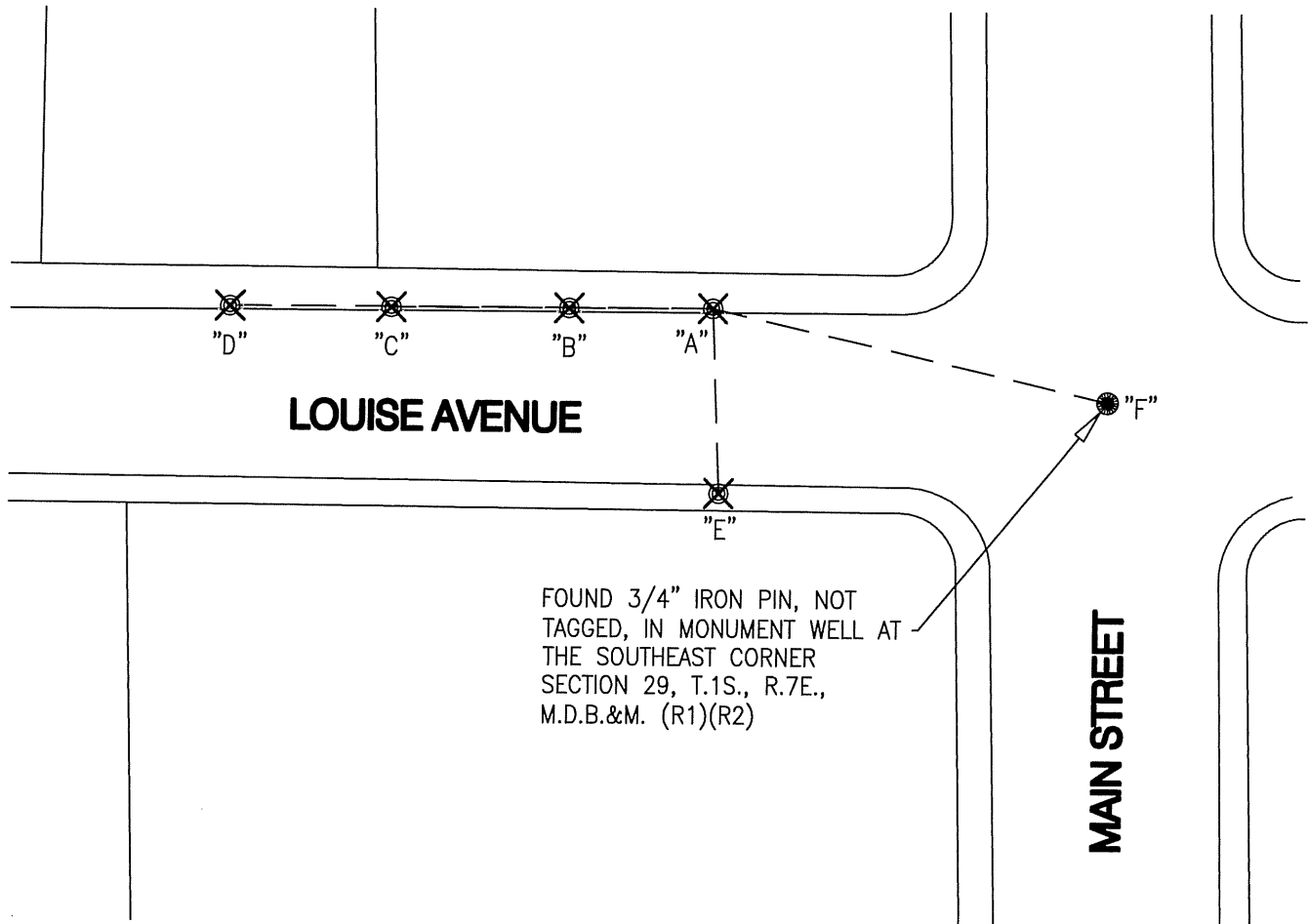
REFERENCES:

- (R1) C.R. 06-06, S.J.C.S.R.
- (R2) 23-S-160, S.J.C.R.



NOTE:

THIS CORNER RECORD DOES NOT VERIFY THIS MONUMENT TO BE IN THE CORRECT POSITION.

X AND DISTANCE TABLE		
BS-@-FS	X	FS DISTANCE
D-A-D	00°00'00"	171.53'(M)
D-A-B	359°54'57"	51.12'(M)
D-A-C	359°54'04"	114.42'(M)
D-A-E	267°31'40"	65.35'(M)
D-A-F	192°59'03"	144.55'(M)



LEGEND:

-  SET CONCRETE NAILS W/ BRASS TAGS MARKED "L.S. 6953".
-  FOUND MONUMENT AS NOTED
- (M) MEASURED DISTANCE. ALL DISTANCES ARE MEASURED UNLESS OTHERWISE NOTED.
- S.J.C.R. DENOTES SAN JOAQUIN COUNTY RECORDS
- S.J.C.S.R. DENOTES SAN JOAQUIN COUNTY SURVEYOR'S RECORDS
- S- DENOTES RECORD OF SURVEY
- C.R. DENOTES CORNER RECORD



NOT TO SCALE