

CORNER RECORD

Agency Index CR-24-302

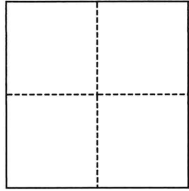
Document Number _____

City of _____ County of San Joaquin, California

Brief Legal Description Parcels 1 and 2, P.M. 22-63

CORNER TYPE

COORDINATES (Optional)



- Government Corner
- Meander
- Rancho
- Control
- Property
- Other

Date of Survey April 3, 2024

N. _____ E. _____

Elevation _____

Units Metric U.S. Survey Foot

Horizontal Datum _____

Zone _____ Epoch Date _____

Vertical Datum _____

Complies with Public Resources Code §§8801-8819

Complies with Public Resources Code §§8890-8902

PLS Act Ref.: 8765(d) 8771 8773 Other:

Corner/Monument: Left as found Established Rebuilt Pre-Construction

Found and tagged Reestablished Referenced Post-Construction

Narrative of corner identified and monument as found, set, reset, replaced, or removed:

See sheet #2 for description(s):

SURVEYOR'S STATEMENT

This Corner Record was prepared by me or under my direction in conformance with

the Professional Land Surveyors' Act on June 26, 2024

Signed [Signature] P.L.S. or R.C.E. No. PLS 7889



COUNTY SURVEYOR'S STATEMENT

This Corner Record was received August 12, 2024

and examined and filed September 6, 2024

Signed James E. Hart P.L.S. or R.C.E. No. 8657

Title County Surveyor

County Surveyor's Comment

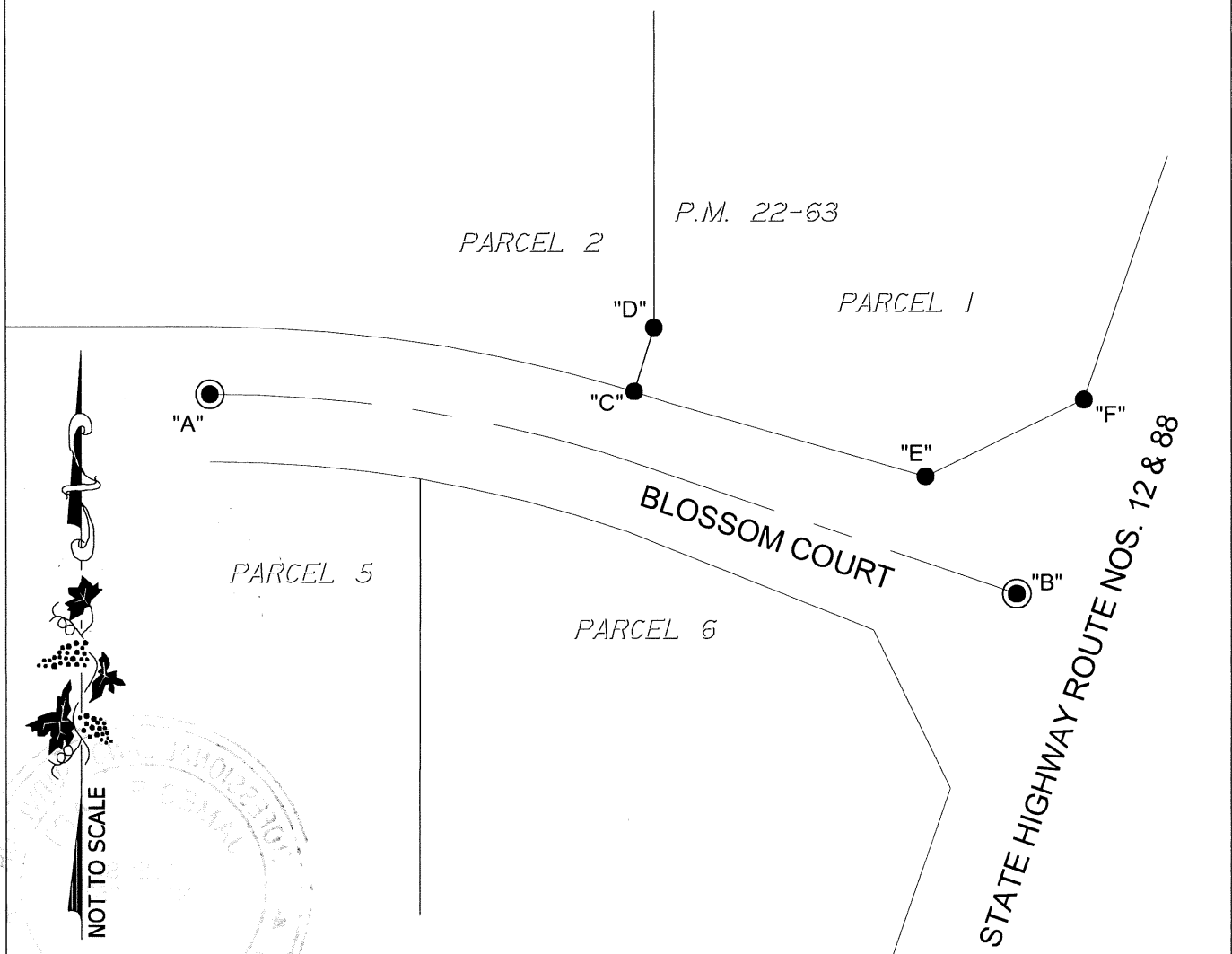


LEGEND:

- P.M. PARCEL MAP, BOOK AND PAGE, SAN JOAQUIN COUNTY RECORDS
- FOUND 3/4" IRON ROD WITH CAP, STAMPED "RCE 25835"
 - ⊙ FOUND 3/4" IRON ROD WITH CAP, STAMPED "RCE 25835" IN MONUMENT WELL

DESCRIPTION:

THIS CORNER RECORD IS FOR THE PURPOSE OF MONUMENT PRESERVATION. REFERENCES WERE SET FOR FOUND MONUMENTS AS NOTED ON DIAGRAM. NO BOUNDARY ANALYSIS WAS PERFORMED. THIS CORNER RECORD DOES NOT VERIFY THE MONUMENT(S) TO BE IN THE CORRECT POSITION.



ANGLE AND DISTANCE TABLE

BS-O-FS	ANGLE	BS DISTANCE	FS DISTANCE
A-C-B	151°44'41"	155.98'	159.79'
A-D-B	135°02'46"	165.35'	166.05'
A-E-B	134°13'43"	265.48'	54.78'
A-F-B	71°26'53"	321.80'	75.92'