

CORNER RECORD

Agency Index CR-24-298

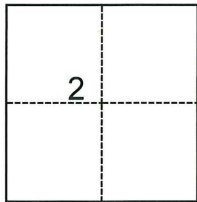
Document Number _____

City of Lodi County of San Joaquin, California

Brief Legal Description NORTH LINE OF LOT 20, M.&P. 11-116

CORNER TYPE

COORDINATES (Optional)



- Government Corner
- Meander
- Rancho
- Control
- Property
- Other

Date of Survey May 10, 2024

N. _____ E. _____

Elevation _____

Units Metric U.S. Survey Foot

Horizontal Datum _____

Zone _____ Epoch Date _____

Vertical Datum _____

Complies with Public Resources Code §§8801-8819

Complies with Public Resources Code §§8890-8902

T.3N., R.6E., M.D.B.&M.

PLS Act Ref.: 8765(d) 8771 8773 Other:

Corner/Monument: Left as found Established Rebuilt Pre-Construction

Found and tagged Reestablished Referenced Post-Construction

Narrative of corner identified and monument as found, set, reset, replaced, or removed:

See sheet #2 for description(s):

SURVEYOR'S STATEMENT

This Corner Record was prepared by me or under my direction in conformance with

the Professional Land Surveyors' Act on Aug. 1, 2024

Signed [Signature] (P.L.S.) or R.C.E. No. 7269



COUNTY SURVEYOR'S STATEMENT

This Corner Record was received August 2, 2024

and examined and filed September 6, 2024

Signed James E. Hart P.L.S. or R.C.E. No. 8657

Title County Surveyor

County Surveyor's Comment



LOMA DRIVE

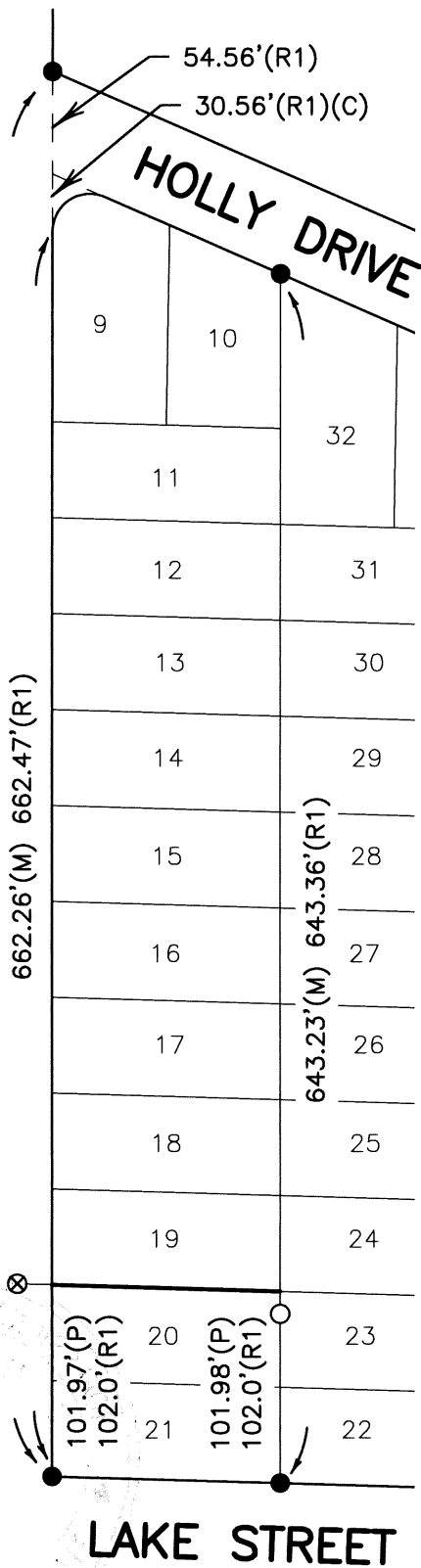
747.38'(M) 747.59' (R1)(C)

662.26'(M) 662.47'(R1)

101.97'(P)
102.0'(R1)

101.98'(P)
102.0'(R1)

643.23'(M) 643.36'(R1)



SCALE: N 1" = 100'

REFERENCE:

(R1) M.&P. 11-116, S.J.C.R.

LEGEND

- FD. FOUND
- S.J.C.R. SAN JOAQUIN COUNTY RECORDS
- I.ROD IRON ROD
- M.&P. MAPS AND PLATS
- FD. 1" I.ROD(R1)(NO TAG)
- ⊗ SET CHISELED CROSS WITH BRASS TAG STAMPED "L.S. 7269" AS WITNESS CORNER, 3.00' WEST ONLINE WITH ESTABLISHED NORTH LINE OF LOT 20.
- SET 3/4" X 30" I.ROD, CAPPED "L.S. 7269" AS WITNESS CORNER, 4.00' SOUTH ONLINE WITH EASTERLY LINE OF LOT 20.
- (P) PRORATED