

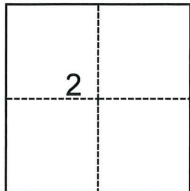
CORNER RECORD

Agency Index CR-24-296
Document Number _____

City of Lodi County of San Joaquin, California
Brief Legal Description LOT 30, M.&P. 11-13

CORNER TYPE

COORDINATES (Optional)



- Government Corner
- Meander
- Rancho
- Control
- Property
- Other

Date of Survey May 14, 2024

N. _____ E. _____
 Elevation _____
 Units Metric U.S. Survey Foot
 Horizontal Datum _____
 Zone _____ Epoch Date _____
 Vertical Datum _____
 Complies with Public Resources Code §§8801-8819
 Complies with Public Resources Code §§8890-8902

T.3N., R.6E., M.D.B.&M.

- PLS Act Ref.: 8765(d) 8771 8773 Other: _____
- Corner/Monument: Left as found Established Rebuilt Pre-Construction
 Found and tagged Reestablished Referenced Post-Construction

Narrative of corner identified and monument as found, set, reset, replaced, or removed:

See sheet #2 for description(s):

SURVEYOR'S STATEMENT

This Corner Record was prepared by me or under my direction in conformance with
 the Professional Land Surveyors' Act on August 1, 2024
 Signed [Signature] P.L.S. or R.C.E. No. 25835

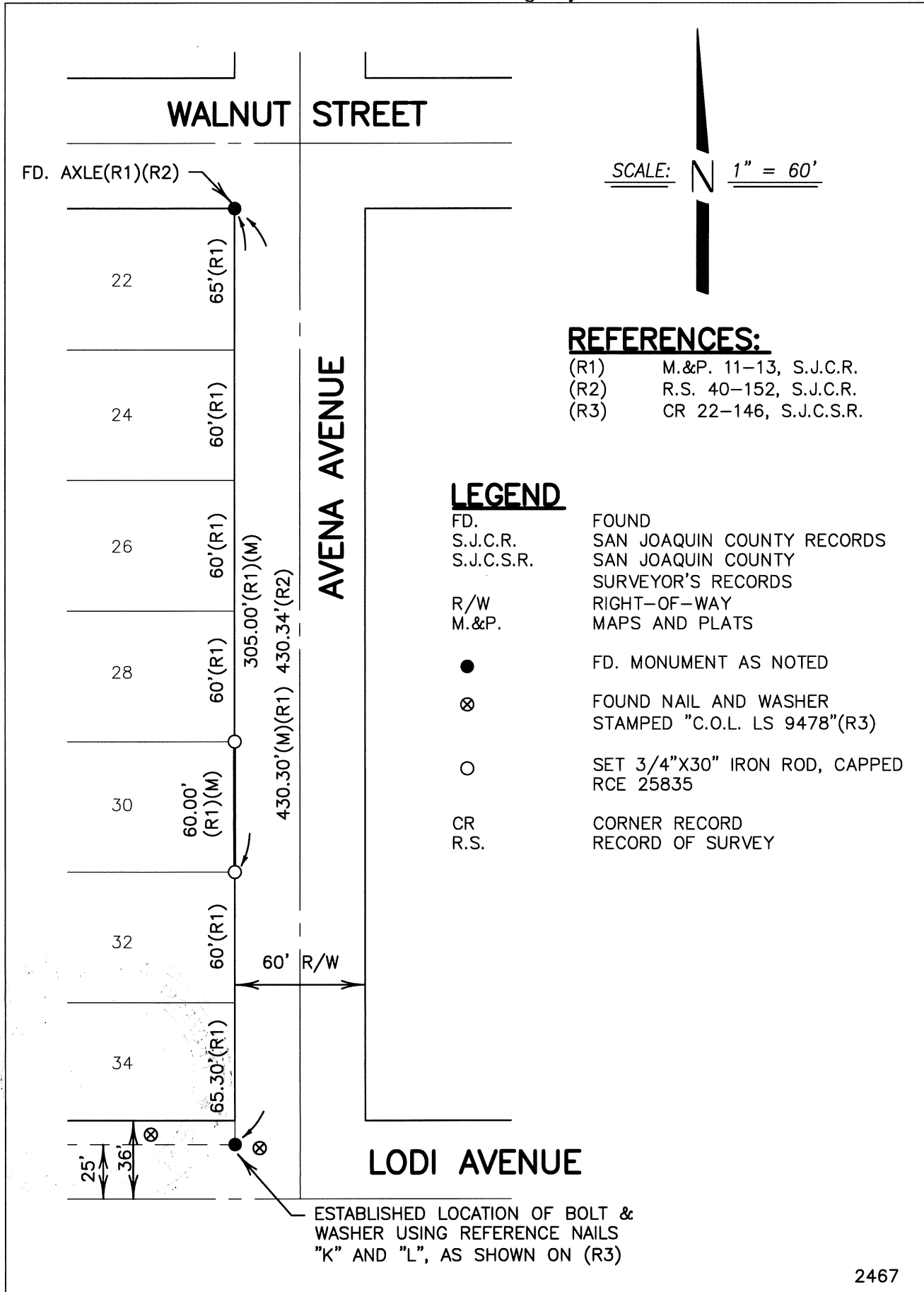


COUNTY SURVEYOR'S STATEMENT

This Corner Record was received August 2, 2024
 and examined and filed September 6, 2024
 Signed James E. Hart P.L.S. or R.C.E. No. 8657
 Title County Surveyor



County Surveyor's Comment



WALNUT STREET

FD. AXLE(R1)(R2)

22

65'(R1)

24

60'(R1)

26

60'(R1)

28

60'(R1)

30

60.00'(R1)(M)

305.00'(R1)(M)

430.34'(R2)

32

60'(R1)

60' R/W

34

65.30'(R1)

25'

36'

AVENA AVENUE

LODI AVENUE

SCALE: N 1" = 60'

REFERENCES:

- (R1) M.&P. 11-13, S.J.C.R.
- (R2) R.S. 40-152, S.J.C.R.
- (R3) CR 22-146, S.J.C.S.R.

LEGEND

- FD. FOUND
- S.J.C.R. SAN JOAQUIN COUNTY RECORDS
- S.J.C.S.R. SAN JOAQUIN COUNTY SURVEYOR'S RECORDS
- R/W RIGHT-OF-WAY
- M.&P. MAPS AND PLATS
- FD. MONUMENT AS NOTED
- ⊗ FOUND NAIL AND WASHER STAMPED "C.O.L. LS 9478"(R3)
- SET 3/4"X30" IRON ROD, CAPPED RCE 25835
- CR CORNER RECORD
- R.S. RECORD OF SURVEY

ESTABLISHED LOCATION OF BOLT & WASHER USING REFERENCE NAILS "K" AND "L", AS SHOWN ON (R3)