

CORNER RECORD

Agency Index CR-24-294

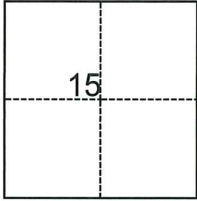
Document Number _____

City of _____ County of San Joaquin, California

Brief Legal Description PARCEL A, P.M. 2-182

CORNER TYPE

COORDINATES (Optional)



- Government Corner
- Meander
- Rancho
- Control
- Property
- Other

Date of Survey April 12, 2024

N. _____ E. _____

Elevation _____

Units Metric U.S. Survey Foot

Horizontal Datum _____

Zone _____ Epoch Date _____

Vertical Datum _____

Complies with Public Resources Code §§8801-8819

Complies with Public Resources Code §§8890-8902

T.2S., R.8E., M.D.B.&M.

PLS Act Ref.: 8765(d) 8771 8773 Other:

Corner/Monument: Left as found Established Rebuilt Pre-Construction

Found and tagged Reestablished Referenced Post-Construction

Narrative of corner identified and monument as found, set, reset, replaced, or removed:

See sheet #2 for description(s):

THIS MONUMENT HAS BEEN REFERENCED PRIOR TO CONSTRUCTION. THE TIES SHOWN HEREON ARE FOR THE PURPOSE OF PERPETUATING THE FOUND MONUMENT AND NO CLAIM IS MADE TO THEIR RELATIONSHIP TO THE BOUNDARY LOCATION SHOWN HEREON.

SURVEYOR'S STATEMENT

This Corner Record was prepared by me or under my direction in conformance with the Professional Land Surveyors' Act on Aug. 1, 2024
 Signed [Signature] (P.L.S.) or R.C.E. No. 7269

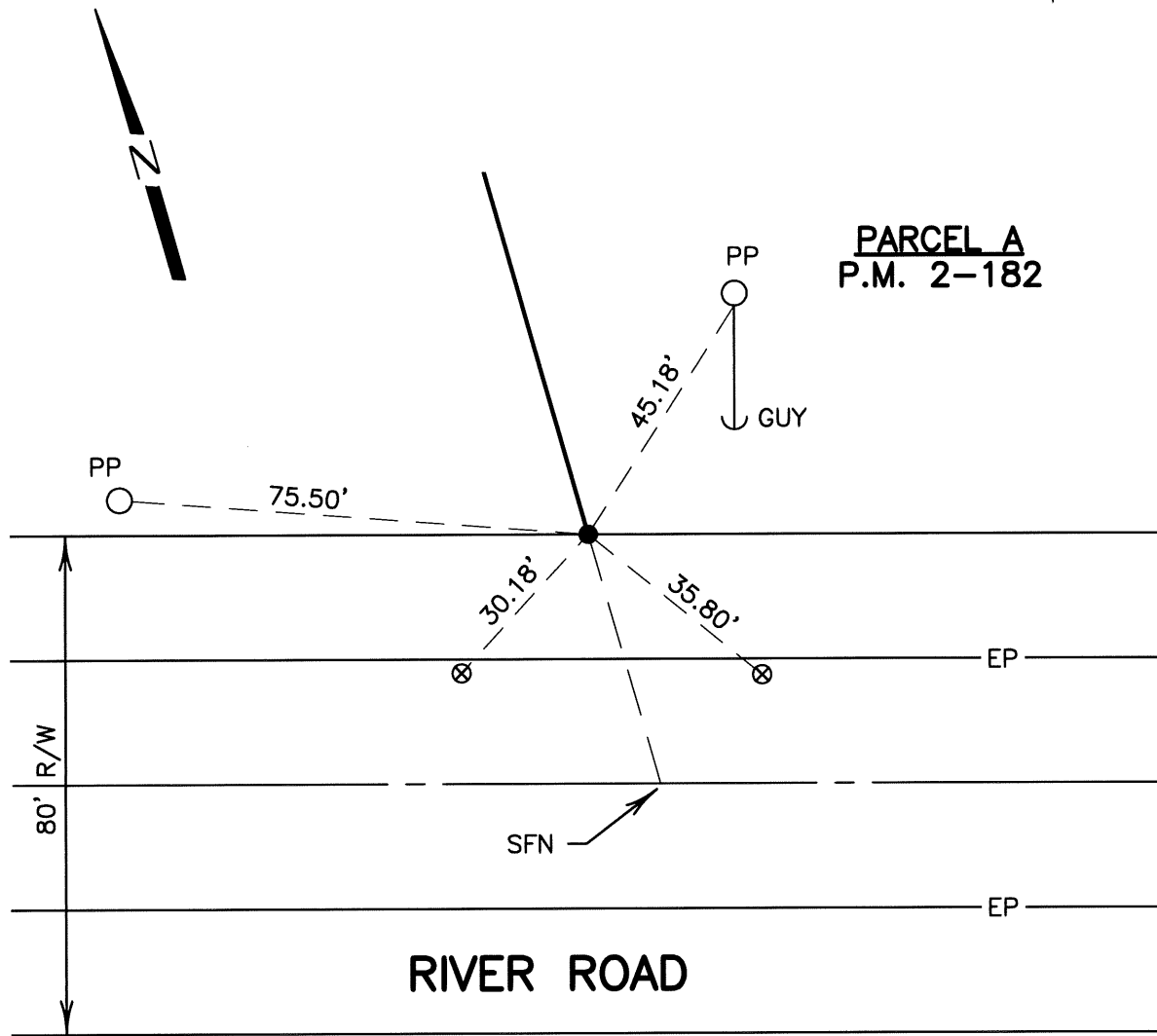


COUNTY SURVEYOR'S STATEMENT

This Corner Record was received August 2, 2024
 and examined and filed September 6, 2024
 Signed James E. Hart P.L.S. or R.C.E. No. 8657
 Title County Surveyor



County Surveyor's Comment _____



PARCEL A
P.M. 2-182

REFERENCE:

(R1) P.M. 2-182, S.J.C.R.

LEGEND

- | | |
|----------|-----------------------------------|
| FD. | FOUND |
| S.J.C.R. | SAN JOAQUIN COUNTY RECORDS |
| R/W | RIGHT-OF-WAY |
| P.M. | PARCEL MAP |
| ● | FD. 1-1/4" I.PIPE(R1)(NO TAG) |
| ⊗ | SET PK NAIL AS REFERENCE (NO TAG) |
| PP | POWER POLE |
| SFN | SEARCHED, FOUND NOTHING |

