

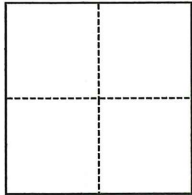
CORNER RECORD

Agency Index CR-24-292
Document Number _____

City of LODI County of SAN JOAQUIN, California
Brief Legal Description LOT 23, M.&P. 43-130, S.J.C.R.

CORNER TYPE

COORDINATES (Optional)



- Government Corner
- Meander
- Rancho
- Control
- Property
- Other

Date of Survey 7/11/2024

N. _____ E. _____
 Elevation _____
 Units Metric U.S. Survey Foot
 Horizontal Datum _____
 Zone _____ Epoch Date _____
 Vertical Datum _____
 Complies with Public Resources Code §§8801-8819
 Complies with Public Resources Code §§8890-8902

- PLS Act Ref.: 8765(d) 8771 8773 Other:
- Corner/Monument: Left as found Established Rebuilt Pre-Construction
 Found and tagged Reestablished Referenced Post-Construction

Narrative of corner identified and monument as found, set, reset, replaced, or removed:
 See sheet #2 for description(s):

SEE SHEET 2 OF 2 FOR MONUMENTS FOUND.

SURVEYOR'S STATEMENT

This Corner Record was prepared by me or under my direction in conformance with
 the Professional Land Surveyors' Act on 07/16/2024
 Signed Walter John Shoup P.L.S. or R.C.E. No. L-7736

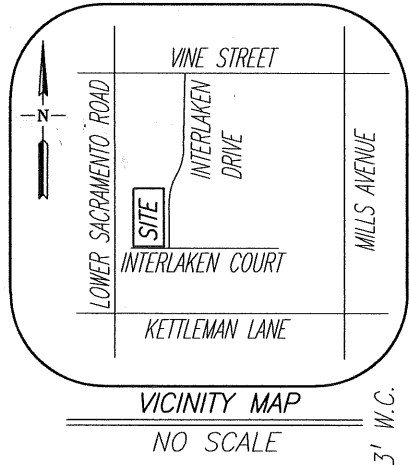
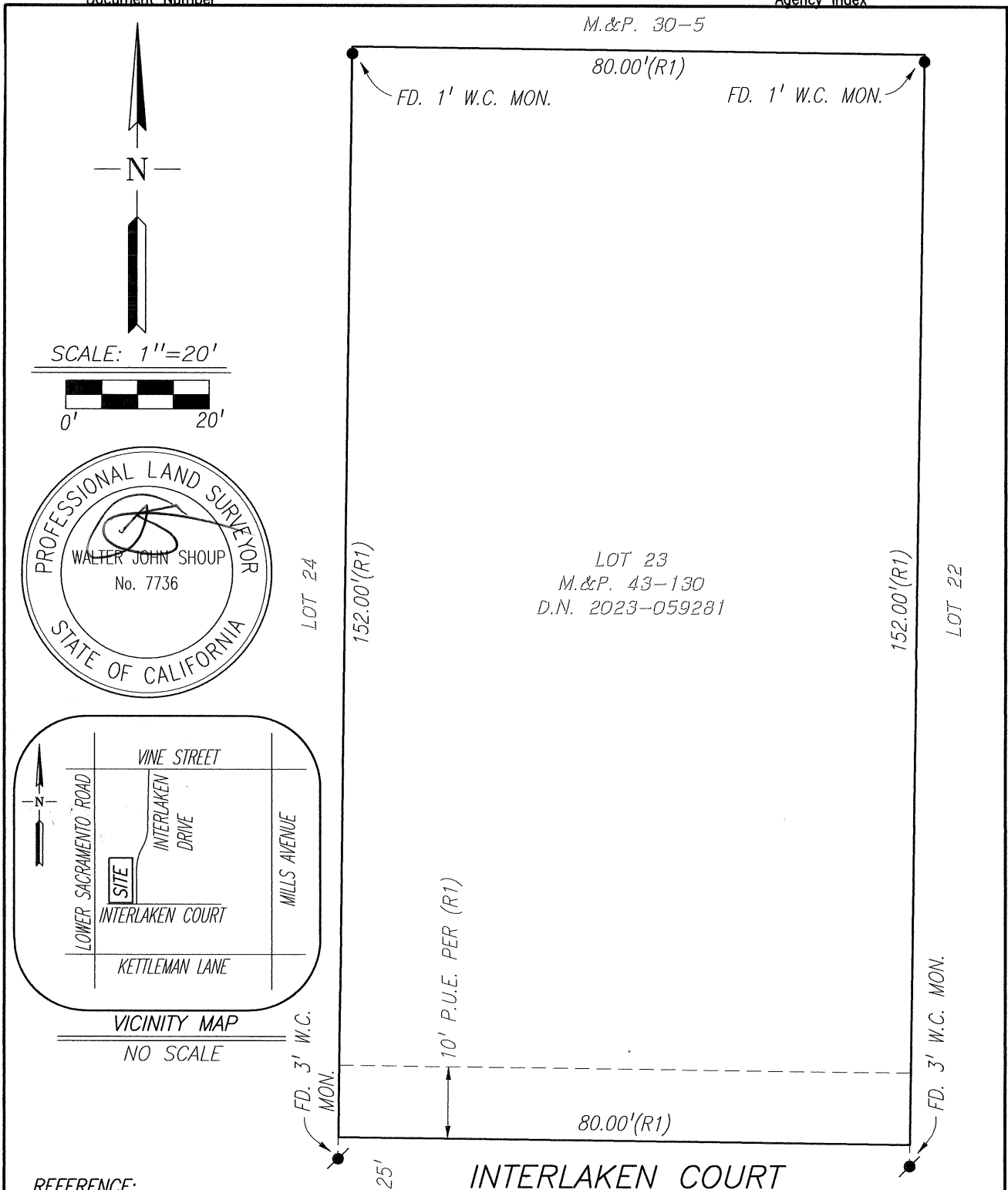


COUNTY SURVEYOR'S STATEMENT

This Corner Record was received July 17, 2024
 and examined and filed August 15, 2024
 Signed James E. Hart P.L.S. or R.C.E. No. 8657
 Title County Surveyor



County Surveyor's Comment



REFERENCE:

(R1) M.&P. 43-130, S.J.C.R.

MONUMENTS FOUND:

- FD. 3/4" IRON ROD CAPPED & STAMPED "BAUMBACH & PIAZZA ELSON PLS 7889" PER (R1)
- FD. 1.25" BRASS DISK STAMPED "SURVEY LS 7889" PER (R1)

LEGEND:

- D.N. DOCUMENT NUMBER, S.J.C.R.
- FD. FOUND
- M.&P. MAPS AND PLATS, BOOK-PAGE, S.J.C.R.
- MON. MONUMENT
- P.U.E. PUBLIC UTILITY EASEMENT
- S.J.C.R. SAN JOAQUIN COUNTY RECORDS
- W.C. WITNESS CORNER

Scale: 1"=20'
 Job No.: 24-002

**CORNER RECORD
 EXHIBIT MAP**

Date: 07/16/2024
 DWG: 24002CR-POST.DWG