

CORNER RECORD

Agency Index CR-24-291

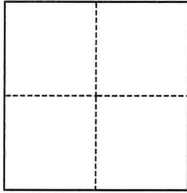
Document Number _____

City of Stockton County of San Joaquin, California

Brief Legal Description SW Return Thornton Rd & Waudman Ave, SEC. 8, T. 2N., R.6E., M.D.B. & M.

CORNER TYPE

COORDINATES (Optional)



- Government Corner
- Meander
- Rancho
- Control
- Property
- Other

N. _____ E. _____

Elevation _____

Units Metric U.S. Survey Foot

Horizontal Datum _____

Zone _____ Epoch Date _____

Vertical Datum _____

Complies with Public Resources Code §§8801-8819

Complies with Public Resources Code §§8890-8902

PLS Act Ref.:

- 8765(d)
- 8771
- 8773
- Other:

Corner/
Monument:

- Left as found
- Established
- Rebuilt
- Pre-Construction
- Found and tagged
- Reestablished
- Referenced
- Post-Construction

Narrative of corner identified and monument as found, set, reset, replaced, or removed:

See sheet #2 for description(s):

SURVEYOR'S STATEMENT

This Corner Record was prepared by me or under my direction in conformance with

the Professional Land Surveyors' Act on July 3, 2024

Signed Douglas F. Banks P.L.S. or R.C.E. No. 8159



COUNTY SURVEYOR'S STATEMENT

This Corner Record was received July 12, 2024

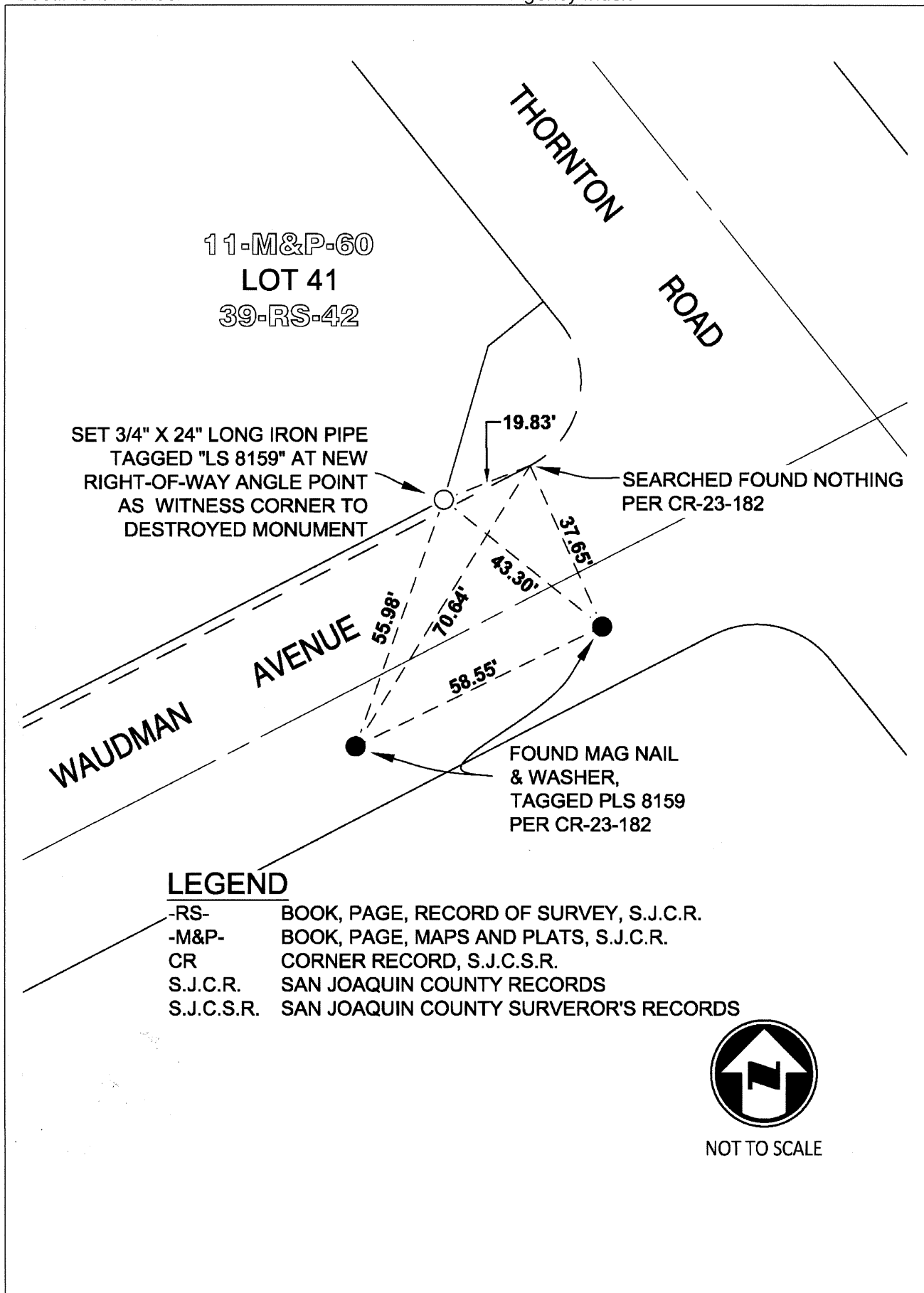
and examined and filed August 15, 2024

Signed James E. Hart P.L.S. or R.C.E. No. 8657

Title County Surveyor

County Surveyor's Comment





11-M&P-60
 LOT 41
 39-RS-42

SET 3/4" X 24" LONG IRON PIPE
 TAGGED "LS 8159" AT NEW
 RIGHT-OF-WAY ANGLE POINT
 AS WITNESS CORNER TO
 DESTROYED MONUMENT

SEARCHED FOUND NOTHING
 PER CR-23-182

FOUND MAG NAIL
 & WASHER,
 TAGGED PLS 8159
 PER CR-23-182

LEGEND

- RS- BOOK, PAGE, RECORD OF SURVEY, S.J.C.R.
- M&P- BOOK, PAGE, MAPS AND PLATS, S.J.C.R.
- CR CORNER RECORD, S.J.C.S.R.
- S.J.C.R. SAN JOAQUIN COUNTY RECORDS
- S.J.C.S.R. SAN JOAQUIN COUNTY SURVEROR'S RECORDS



NOT TO SCALE