

CORNER RECORD

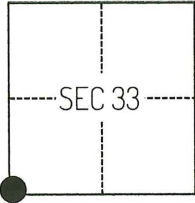
Agency Index CR-24-280
Document Number _____

City of _____ County of SAN JOAQUIN, California

Brief Legal Description FOUND MONUMENTS AT THE INTERSECTION OF DUSTIN ROAD AND LIBERTY ROAD.

CORNER TYPE

COORDINATES (Optional)



T5N/R7E

- Government Corner Control
 Meander Property
 Rancho Other

Date of Survey APRIL 30, 2024

N. _____ E. _____
Elevation _____
Units Metric U.S. Survey Foot
Horizontal Datum _____
Zone _____ Epoch Date _____
Vertical Datum _____
 Complies with Public Resources Code §§8801-8819
 Complies with Public Resources Code §§8890-8902

- PLS Act Ref.: 8765(d) 8771 8773 Other:
- Corner/
Monument: Left as found Established Rebuilt Pre-Construction
 Found and tagged Reestablished Referenced Post-Construction

Narrative of corner identified and monument as found, set, reset, replaced, or removed:
 See sheet #2 for description(s):

SURVEYOR'S STATEMENT

This Corner Record was prepared by me or under my direction in conformance with
the Professional Land Surveyors' Act on APRIL 30, 2024
Signed [Signature] P.L.S. or R.C.E. No. 8489



COUNTY SURVEYOR'S STATEMENT

This Corner Record was received July 16, 2024
and examined and filed August 8, 2024
Signed [Signature] P.L.S. or R.C.E. No. 8657
Title County Surveyor



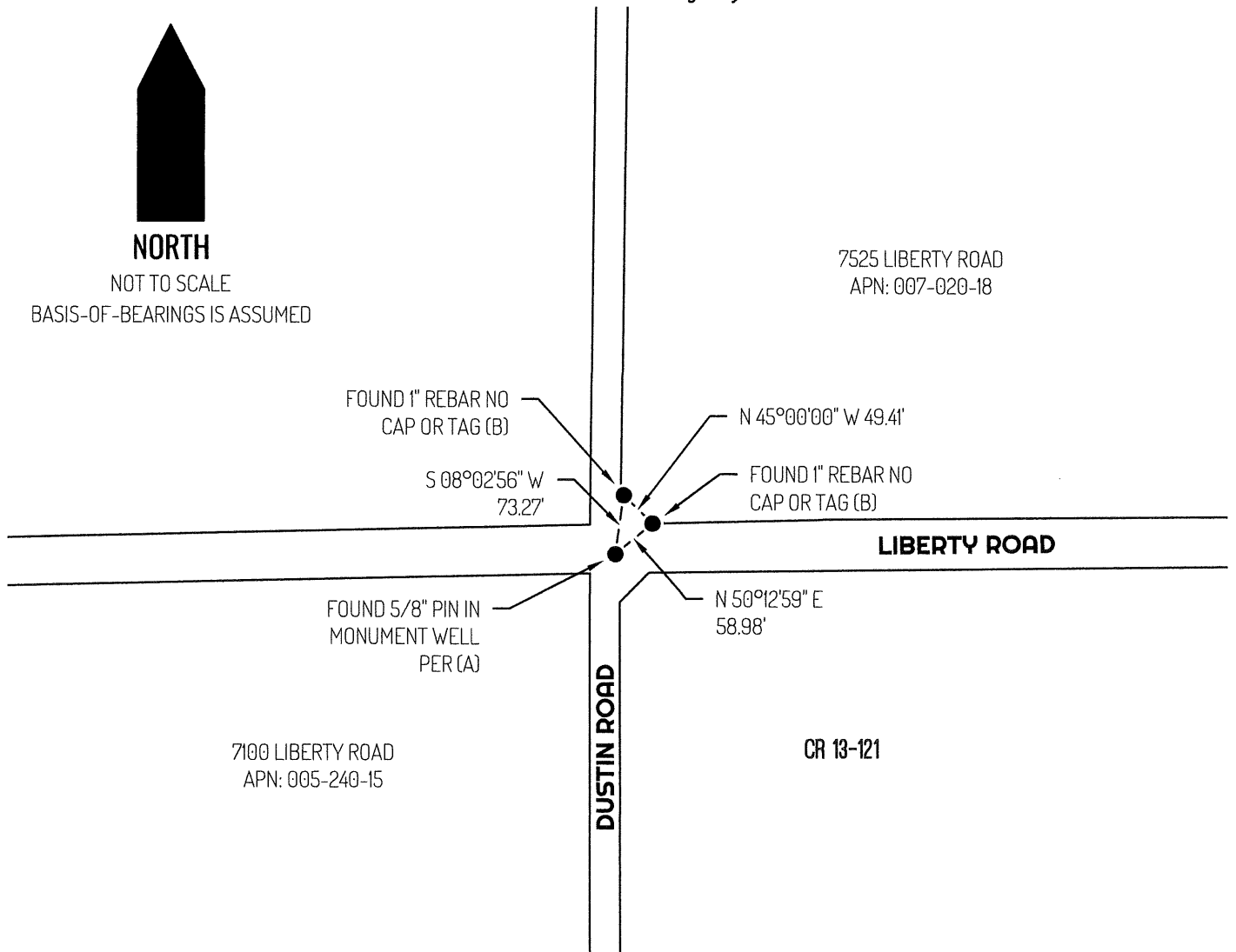
County Surveyor's Comment



NORTH

NOT TO SCALE

BASIS-OF-BEARINGS IS ASSUMED



LEGEND

- 7525
- APN
- CR

FOUND MONUMENT AS NOTED
 REFERENCE STREET ADDRESS
 TAX ASSESSOR PARCEL NUMBER
 CORNER RECORD, SAN JOAQUIN COUNTY
 SURVEYOR'S RECORDS

- TIE LINE
- LOT LINE

SURVEYOR NOTES

THIS CORNER RECORD IS BEING FILED TO FULFILL THE PRE-CONSTRUCTION MONUMENT PRESERVATION REQUIREMENTS OF SECTION 8771 OF THE CALIFORNIA BUSINESS AND PROFESSIONS CODE. IT IS NOT THE RESULT OF A FULLY RESOLVED BOUNDARY SURVEY FOR ANY PARCEL OF REAL PROPERTY.

REFERENCES

- (A) CORNER RECORD 13-121, SAN JOAQUIN COUNTY SURVEYOR'S RECORDS
- (B) MONUMENT NOT OF RECORD