

CORNER RECORD

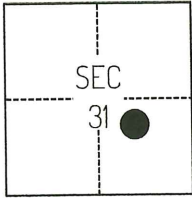
Agency Index CR-24-277
Document Number _____

City of _____ County of SAN JOAQUIN, California

Brief Legal Description FOUND MONUMENTS ALONG TULLY ROAD PER CORNER RECORD 24-171, SAN JOAQUIN COUNTY SURVEYOR'S RECORDS.

CORNER TYPE

COORDINATES (Optional)



T4N/R8E

- Government Corner
- Meander
- Rancho
- Control
- Property
- Other

Date of Survey January 27, 2023

N. _____ E. _____

Elevation _____

Units Metric U.S. Survey Foot

Horizontal Datum _____

Zone _____ Epoch Date _____

Vertical Datum _____

Complies with Public Resources Code §§8801-8819

Complies with Public Resources Code §§8890-8902

PLS Act Ref.: 8765(d) 8771 8773 Other:

Corner/Monument: Left as found Established Rebuilt Pre-Construction

Found and tagged Reestablished Referenced Post-Construction

Narrative of corner identified and monument as found, set, reset, replaced, or removed:

See sheet #2 for description(s):

SURVEYOR'S STATEMENT

This Corner Record was prepared by me or under my direction in conformance with the Professional Land Surveyors' Act on May 6, 2024

Signed Scott L. Blake P.L.S. or R.C.E. No. 8489



COUNTY SURVEYOR'S STATEMENT

This Corner Record was received July 16, 2024

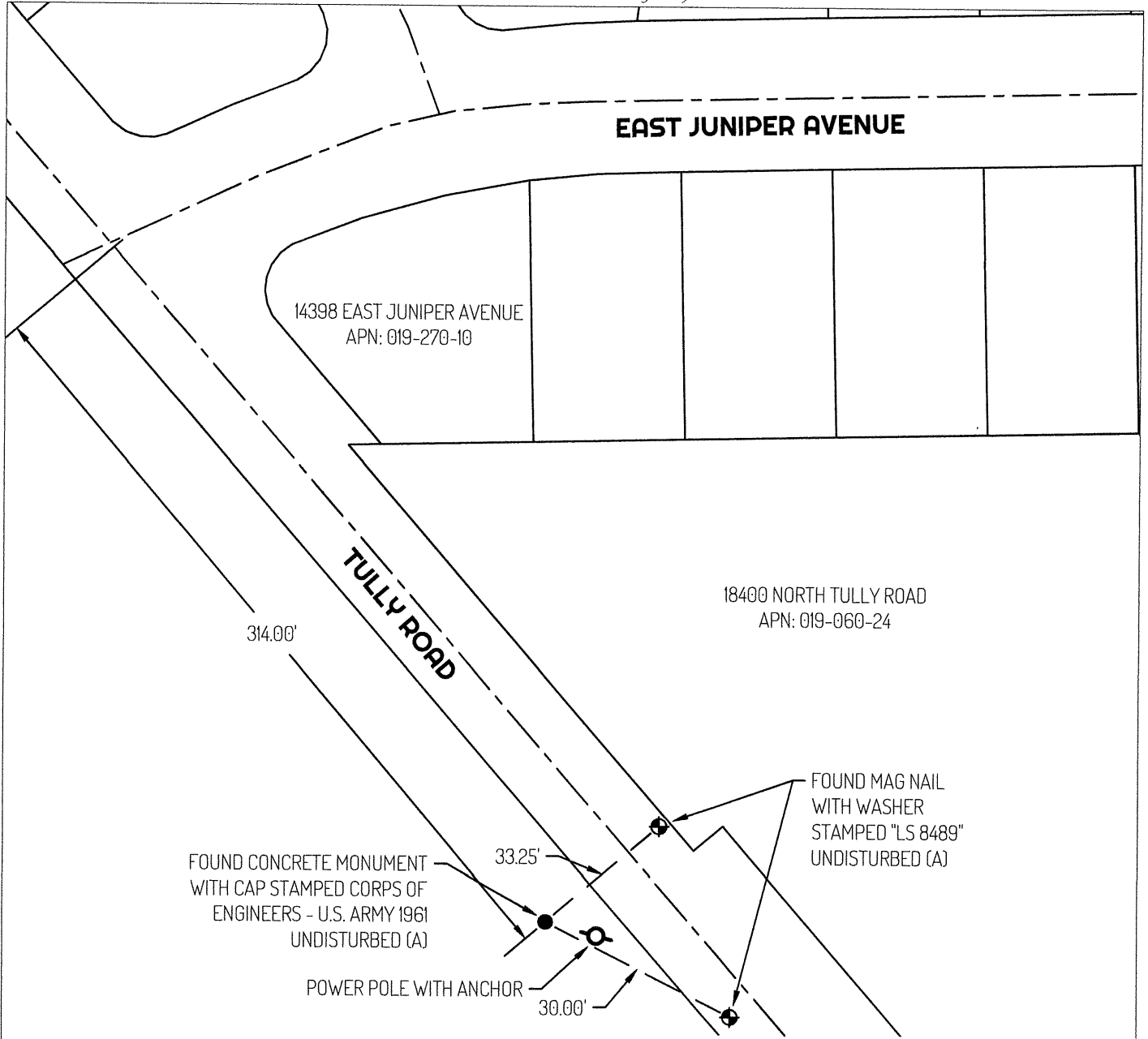
and examined and filed August 8, 2024

Signed James E. Hart P.L.S. or R.C.E. No. 8657

Title County Surveyor

County Surveyor's Comment





LEGEND

- FOUND MONUMENT AS NOTED
- ⊕ FOUND MAG NAIL AS NOTED
- APN ASSESSOR'S PARCEL NUMBER
- — — TIE LINE
- LOT LINE
- - - - - CENTERLINE

REFERENCE

(A) CORNER RECORD 24-171 SAN JOAQUIN COUNTY SURVEYOR'S RECORDS

