

# CORNER RECORD

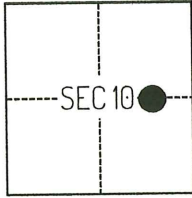
Agency Index CR-24-275  
Document Number \_\_\_\_\_

City of STOCKTON County of SAN JOAQUIN, California

Brief Legal Description FOUND MONUMENTS SHOWN ON CR 22-300, SAN JOAQUIN COUNTY SURVEYOR'S RECORDS.

### CORNER TYPE

### COORDINATES (Optional)



C.M. WEBER GRANT

- Government Corner
- Meander
- Rancho
- Control
- Property
- Other

Date of Survey February 10, 2023

N. \_\_\_\_\_ E. \_\_\_\_\_

Elevation \_\_\_\_\_

Units  Metric  U.S. Survey Foot

Horizontal Datum \_\_\_\_\_

Zone \_\_\_\_\_ Epoch Date \_\_\_\_\_

Vertical Datum \_\_\_\_\_

Complies with Public Resources Code §§8801-8819

Complies with Public Resources Code §§8890-8902

PLS Act Ref.:  8765(d)  8771  8773  Other:

Corner/Monument:  Left as found  Established  Rebuilt  Pre-Construction

Found and tagged  Reestablished  Referenced  Post-Construction

Narrative of corner identified and monument as found, set, reset, replaced, or removed:

See sheet #2 for description(s):

### SURVEYOR'S STATEMENT

This Corner Record was prepared by me or under my direction in conformance with  
the Professional Land Surveyors' Act on May 1, 2023  
Signed [Signature] P.L.S. or R.C.E. No. 8489

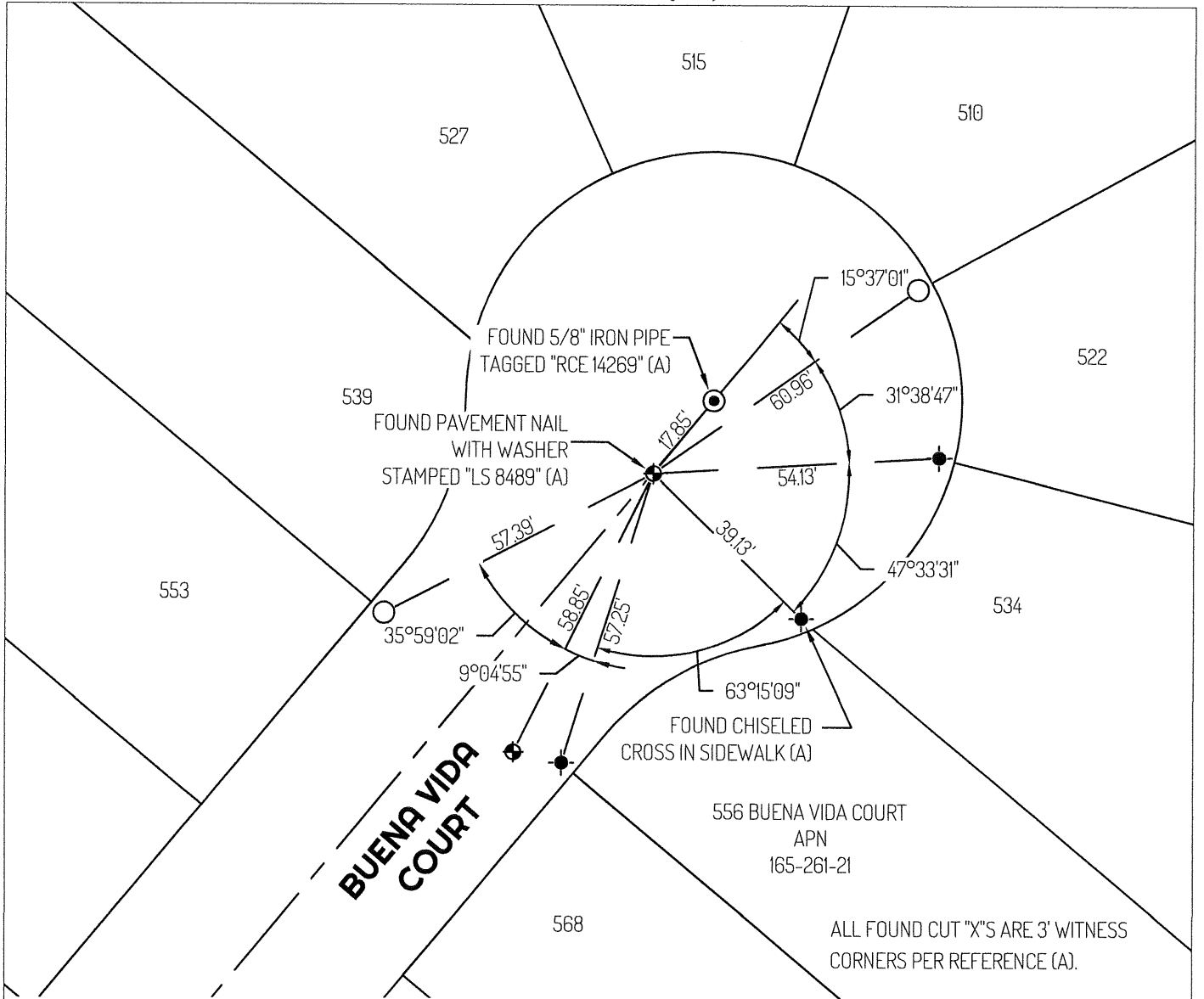


### COUNTY SURVEYOR'S STATEMENT

This Corner Record was received July 2, 2024  
and examined and filed August 8, 2024  
Signed [Signature] P.L.S. or R.C.E. No. 8657  
Title County Surveyor



County Surveyor's Comment



ALL FOUND CUT "X" ARE 3' WITNESS CORNERS PER REFERENCE (A).

**LEGEND**

- SET BRASS PLUG STAMPED "LS 8489"
- ⊙ FOUND 5/8" IRON PIPE TAGGED "RCE 14269", PER (A)
- ⊕ FOUND CONTROL POINT
- ⊙ FOUND CHISELED CROSS, PER (A)
- 435 REFERENCE STREET ADDRESS
- CR CORNER RECORD, SAN JOAQUIN COUNTY SURVEYOR'S RECORDS
- APN ASSESSOR'S PARCEL NUMBER

- TIE LINE
- LOT LINE
- - - CENTERLINE

**REFERENCE**

- (A) CORNER RECORD 22-300, SAN JOAQUIN COUNTY SURVEYOR'S RECORDS

