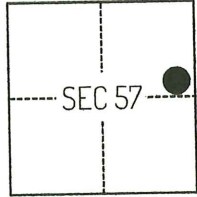


# CORNER RECORD

Agency Index CR-24-272  
 Document Number \_\_\_\_\_

City of \_\_\_\_\_ County of SAN JOAQUIN, California

Brief Legal Description FOUND MONUMENTS ALONG DEL REY COURT, PER CORNER RECORD 22-301, SAN JOAQUIN COUNTY SURVEYOR'S RECORDS.



C.M. WEBER GRANT

### CORNER TYPE

- Government Corner     Control  
 Meander                     Property  
 Rancho                          Other

Date of Survey JANUARY 25, 2023

### COORDINATES (Optional)

- N. \_\_\_\_\_ E. \_\_\_\_\_  
 Elevation \_\_\_\_\_  
 Units     Metric     U.S. Survey Foot  
 Horizontal Datum \_\_\_\_\_  
 Zone \_\_\_\_\_ Epoch Date \_\_\_\_\_  
 Vertical Datum \_\_\_\_\_  
 Complies with Public Resources Code §§8801-8819  
 Complies with Public Resources Code §§8890-8902

- PLS Act Ref.:     8765(d)     8771     8773     Other:  
 Corner/Monument:     Left as found     Established     Rebuilt     Pre-Construction  
                                   Found and tagged     Reestablished     Referenced     Post-Construction

Narrative of corner identified and monument as found, set, reset, replaced, or removed:  
 See sheet #2 for description(s):

### SURVEYOR'S STATEMENT

This Corner Record was prepared by me or under my direction in conformance with  
 the Professional Land Surveyors' Act on APRIL 25, 2024  
 Signed [Signature] P.L.S. or R.C.E. No. 8489

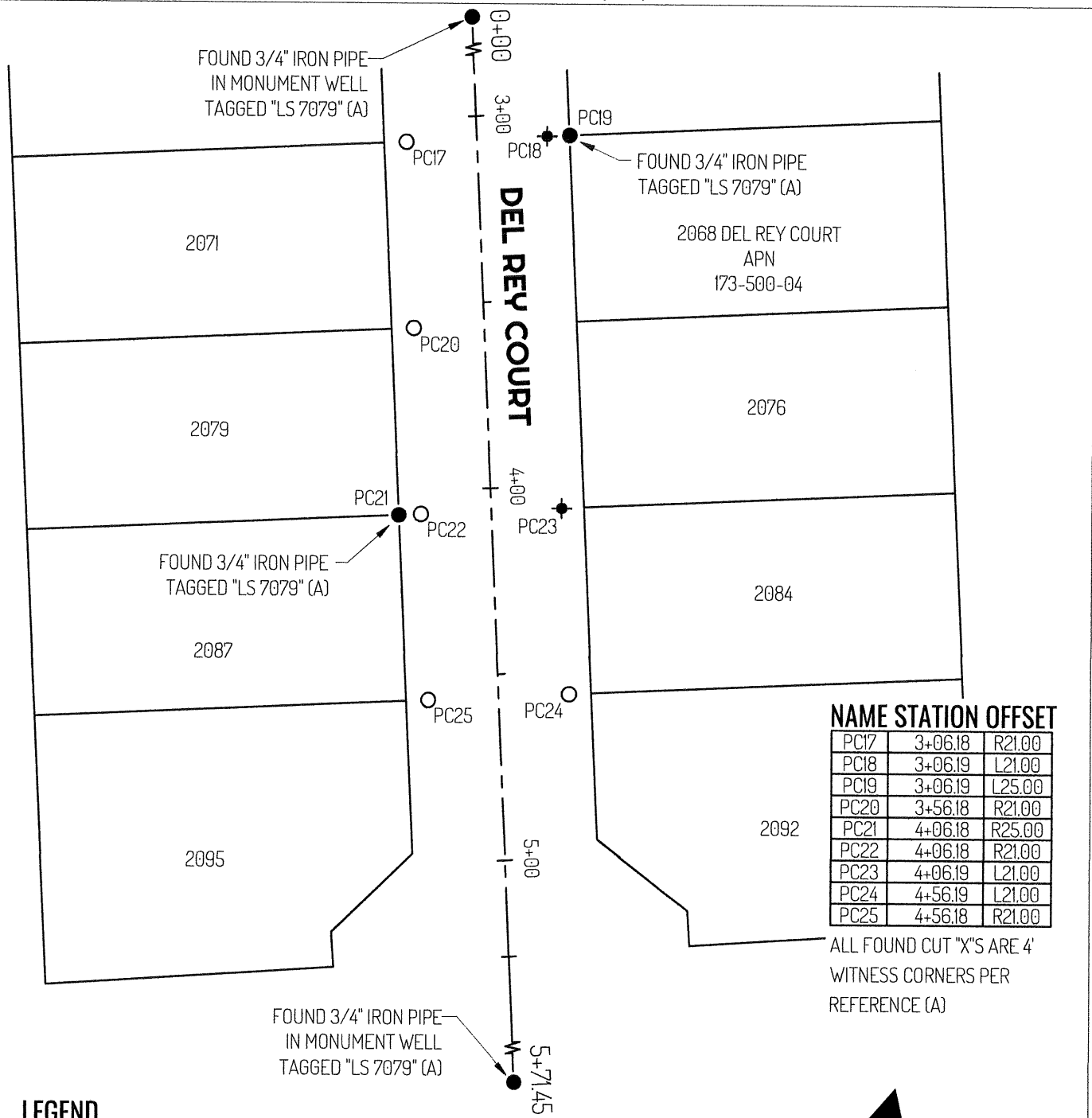


### COUNTY SURVEYOR'S STATEMENT

This Corner Record was received July 2, 2024  
 and examined and filed August 8, 2024  
 Signed [Signature] P.L.S. or R.C.E. No. 8657  
 Title County Surveyor



County Surveyor's Comment



NAME	STATION	OFFSET
PC17	3+06.18	R21.00
PC18	3+06.19	L21.00
PC19	3+06.19	L25.00
PC20	3+56.18	R21.00
PC21	4+06.18	R25.00
PC22	4+06.18	R21.00
PC23	4+06.19	L21.00
PC24	4+56.19	L21.00
PC25	4+56.18	R21.00

ALL FOUND CUT "X" ARE 4' WITNESS CORNERS PER REFERENCE (A)

**LEGEND**

- MONUMENT DESTROYED AND RESET WITH BRASS PLUG L.S. 8489
- FOUND 3/4" IRON PIPE UNDISTURBED AS NOTED, PER (A)
- ⊕ FOUND CUT "X" UNDISTURBED, PER (A)
- 2068 REFERENCE STREET ADDRESS
- APN ASSESSOR'S PARCEL NUMBER
- LOT LINE
- - - RIGHT-OF-WAY CENTERLINE



**NORTH**  
N.T.S.

**REFERENCE**

(A) CORNER RECORD 22-301, SAN JOAQUIN COUNTY SURVEYOR'S RECORDS