

# CORNER RECORD

Agency Index CR-24-269  
Document Number \_\_\_\_\_

City of LODI County of SAN JOAQUIN, California  
Brief Legal Description FOUND MONUMENTS NEAR THE INTERSECTION OF WOODROW STREET AND HALE ROAD.

### CORNER TYPE

### COORDINATES (Optional)



T3N/R7E

- Government Corner
- Meander
- Rancho
- Control
- Property
- Other

Date of Survey June 3, 2024

N. \_\_\_\_\_ E. \_\_\_\_\_

Elevation \_\_\_\_\_

Units  Metric  U.S. Survey Foot

Horizontal Datum \_\_\_\_\_

Zone \_\_\_\_\_ Epoch Date \_\_\_\_\_

Vertical Datum \_\_\_\_\_

Complies with Public Resources Code §§8801-8819

Complies with Public Resources Code §§8890-8902

PLS Act Ref.:  8765(d)  8771  8773  Other:

Corner/Monument:  Left as found  Established  Rebuilt  Pre-Construction  
 Found and tagged  Reestablished  Referenced  Post-Construction

Narrative of corner identified and monument as found, set, reset, replaced, or removed:

See sheet #2 for description(s):

THE FOUND MONUMENT(S) SHOWN ON THIS CORNER RECORD WERE FOUND IN THE APPROXIMATE LOCATION OF THE CORNER(S) ON MAP 17-110, SAN JOAQUIN COUNTY RECORDS. I DID NOT VERIFY THE IDENTITY AND VALIDITY OF THE MONUMENT FOUND AS ACTUALLY MARKING THE PROPERTY CORNER.

### SURVEYOR'S STATEMENT

This Corner Record was prepared by me or under my direction in conformance with  
the Professional Land Surveyors' Act on June 4, 2024  
Signed Scott L. Blake P.L.S. or R.C.E. No. 8489



### COUNTY SURVEYOR'S STATEMENT

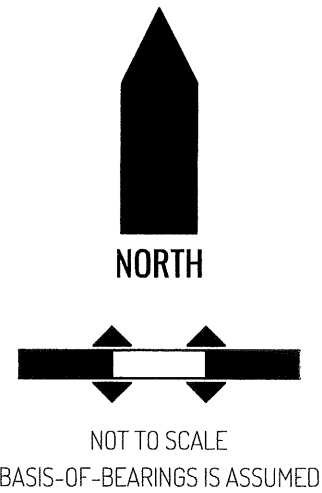
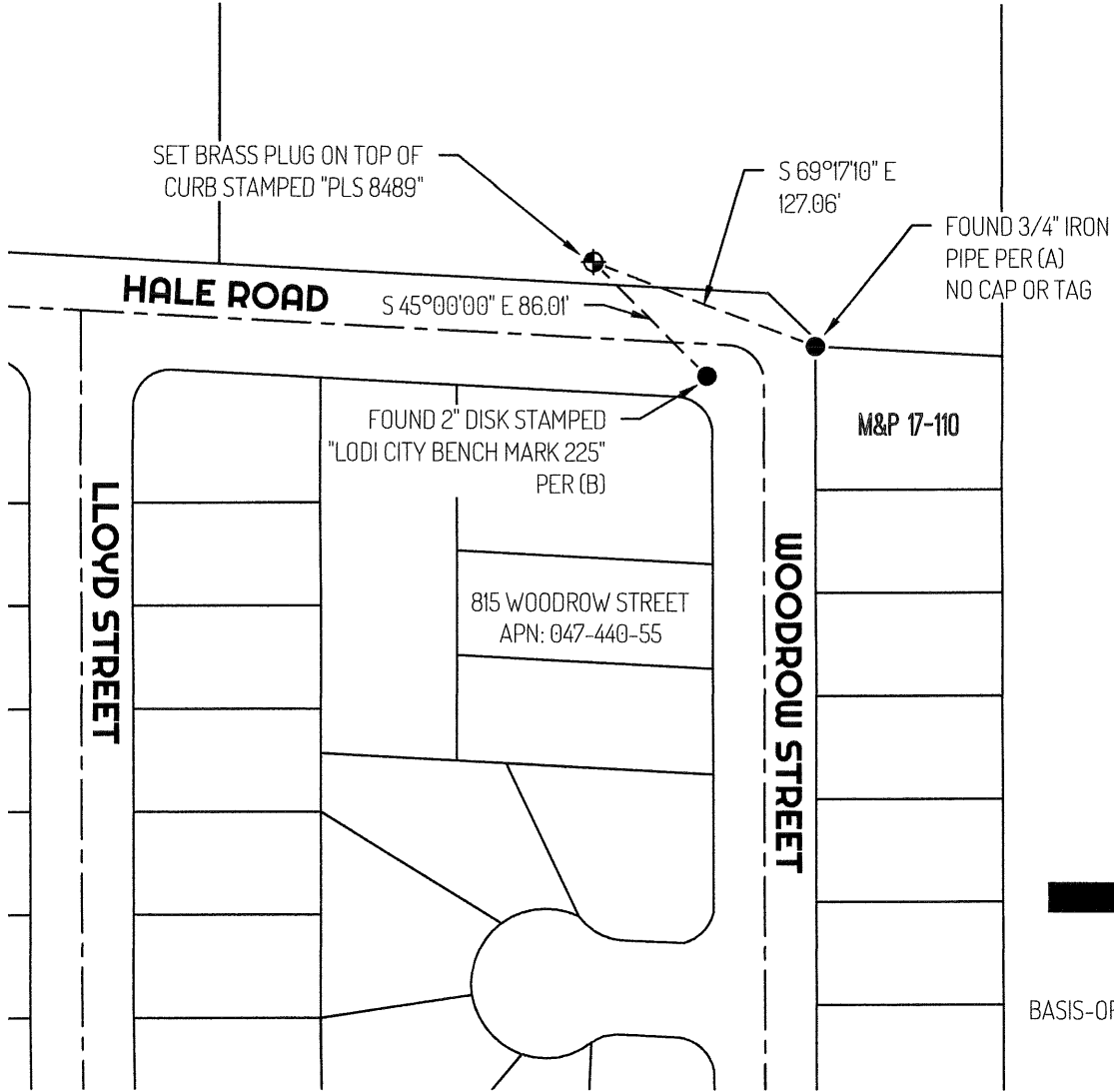
This Corner Record was received July 2, 2024  
and examined and filed August 8, 2024  
Signed James E. Hart P.L.S. or R.C.E. No. 8657  
Title County Surveyor



County Surveyor's Comment

Document Number

Agency Index



**LEGEND**

- FOUND MONUMENT AS NOTED
- ⊕ SET CONTROL POINT
- 815 REFERENCE STREET ADDRESS
- M&P MAPS & PLATS, SAN JOAQUIN COUNTY RECORDS
- APN TAX ASSESSOR PARCEL NUMBER
- TIE LINE
- ==== LOT LINE
- - - - - RIGHT-OF-WAY CENTERLINE

**SURVEYOR NOTES**

THIS CORNER RECORD IS BEING FILED TO FULFILL THE PRE-CONSTRUCTION MONUMENT PRESERVATION REQUIREMENTS OF SECTION 8771 OF THE CALIFORNIA BUSINESS AND PROFESSIONS CODE. IT IS NOT THE RESULT OF A FULLY RESOLVED BOUNDARY SURVEY FOR ANY PARCEL OF REAL PROPERTY.

**REFERENCES**

- (A) MAPS & PLATS BOOK 17, AT PAGE 110, SAN JOAQUIN COUNTY RECORDS
- (B) NOT OF RECORD