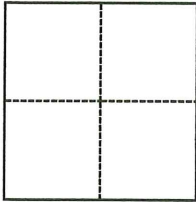


# CORNER RECORD

Agency Index CR-24-268  
 Document Number \_\_\_\_\_

City of STOCKTON County of SAN JOAQUIN, California  
 Brief Legal Description SWENSON GOLF COURSE, PORTION OF SEC. 20, T.2N., R.6E., M.D.B.&M.

### CORNER TYPE



- Government Corner     Control  
 Meander                     Property  
 Rancho                         Other

Date of Survey June 12, 2024

### COORDINATES (Optional)

N. \_\_\_\_\_ E. \_\_\_\_\_  
 Elevation \_\_\_\_\_  
 Units  Metric  U.S. Survey Foot  
 Horizontal Datum \_\_\_\_\_  
 Zone \_\_\_\_\_ Epoch Date \_\_\_\_\_  
 Vertical Datum \_\_\_\_\_  
 Complies with Public Resources Code §§8801-8819  
 Complies with Public Resources Code §§8890-8902

PLS Act Ref.:  8765(d)     8771     8773     Other:  
 Corner/Monument:  Left as found     Established     Rebuilt     Pre-Construction  
                            Found and tagged     Reestablished     Referenced     Post-Construction

Narrative of corner identified and monument as found, set, reset, replaced, or removed:

See sheet #2 for description(s):

PRE-CONSTRUCTION CORNER RECORD. THIS DOCUMENT IS FOR THE PURPOSE OF PRESERVING AND ESTABLISHING TIES TO EXISTING MONUMENT IN THE AREA OF NEW CONSTRUCTION FENCE WITHIN THE SWENSON GOLF COURSE.

### SURVEYOR'S STATEMENT

This Corner Record was prepared by me or under my direction in conformance with the Professional Land Surveyors' Act on July 8, 2024  
 Signed *Zachary C. Wong* P.L.S. or R.C.E. No. L.S. 7600



### COUNTY SURVEYOR'S STATEMENT

This Corner Record was received July 9, 2024  
 and examined and filed July 30, 2024  
 Signed *James E. Hart* P.L.S. or R.C.E. No. 8657  
 Title County Surveyor



County Surveyor's Comment

**NOTES:**

1. RETRACEMENT SURVEY WILL DETERMINE VALIDITY OF MONUMENT LOCATIONS.
2. ALL REFERENCES ARE SAN JOAQUIN COUNTY RECORDS.

**LEGEND:**

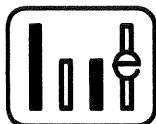
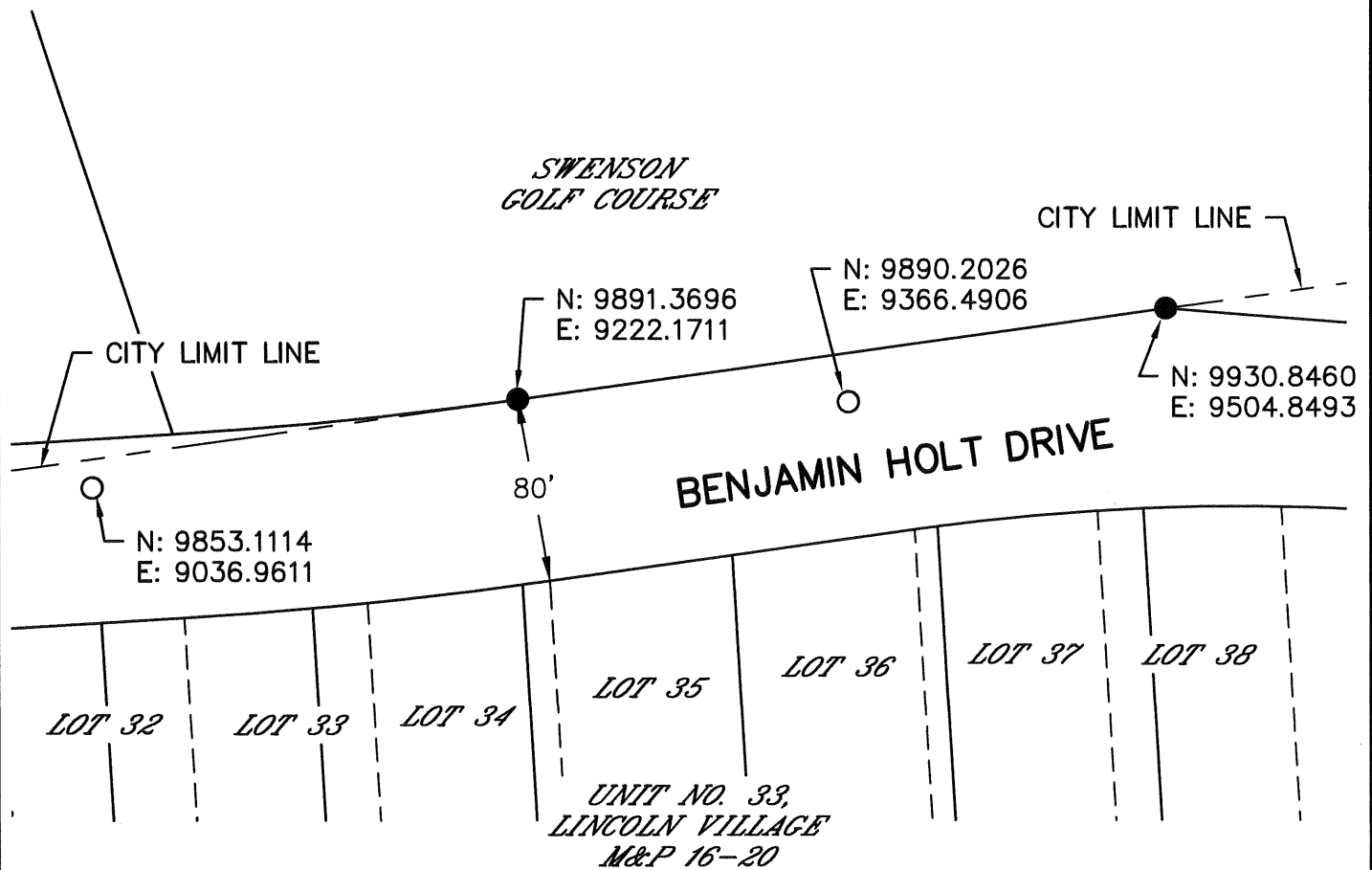
- M&P MAPS AND PLATS, BOOK-PAGE REF. REFERENCE
- FOUND 3/4" IRON PIN, NO REF. [1" IRON ROD STAMPED R.C.E. 1014 (A)]
  - SET MAG NAIL WITH STEEL WASHER STAMPED L.S. 7600

**REFERENCE:**

(A) M&P 16-20



0 80  
SCALE 1"=80'



**WONG ENGINEERS, INC.**  
 4578 FEATHER RIVER DRIVE, SUITE A  
 STOCKTON, CA 95219 (209) 476-0011  
 JULY 8, 2024 PAGE 2 OF 2

**DESCRIPTION:**

THIS DOCUMENT IS FOR THE PURPOSE OF PRESERVING AND ESTABLISHING TIES TO EXISTING MONUMENTS.