

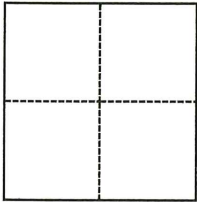
# CORNER RECORD

Agency Index CR-24-266  
Document Number \_\_\_\_\_

City of STOCKTON County of SAN JOAQUIN, California  
Brief Legal Description SOUTH LINE OF PARCEL 'A' PER R.S. 29-29, SEC. 21, T2N, R6E, MDB&M

### CORNER TYPE

### COORDINATES (Optional)



- Government Corner
- Meander
- Rancho
- Control
- Property
- Other

Date of Survey January 25, 2024

N. \_\_\_\_\_ E. \_\_\_\_\_  
 Elevation \_\_\_\_\_  
 Units  Metric  U.S. Survey Foot  
 Horizontal Datum \_\_\_\_\_  
 Zone \_\_\_\_\_ Epoch Date \_\_\_\_\_  
 Vertical Datum \_\_\_\_\_  
 Complies with Public Resources Code §§8801-8819  
 Complies with Public Resources Code §§8890-8902

PLS Act Ref.:  8765(d)  8771  8773  Other:  
 Corner/Monument:  Left as found  Established  Rebuilt  Pre-Construction  
 Found and tagged  Reestablished  Referenced  Post-Construction

Narrative of corner identified and monument as found, set, reset, replaced, or removed:  
 See sheet #2 for description(s):

PRE-CONSTRUCTION CORNER RECORD. THIS DOCUMENT IS FOR THE PURPOSE OF PRESERVING AND ESTABLISHING TIES TO EXISTING MONUMENT IN THE AREA OF NEW CONSTRUCTION OF IMPROVEMENTS, AS SHOWN ON BOOK 29 OF SURVEYS, PAGE 29, SAN JOAQUIN COUNTY RECORDS.

### SURVEYOR'S STATEMENT

This Corner Record was prepared by me or under my direction in conformance with  
 the Professional Land Surveyors' Act on July 2, 2024  
 Signed [Signature] P.L.S. or R.C.E. No. L.S. 7600



### COUNTY SURVEYOR'S STATEMENT

This Corner Record was received July 9, 2024  
 and examined and filed July 30, 2024  
 Signed James E. Hart P.L.S. or R.C.E. No. 8657  
 Title County Surveyor



County Surveyor's Comment

**NOTES:**

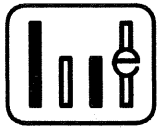
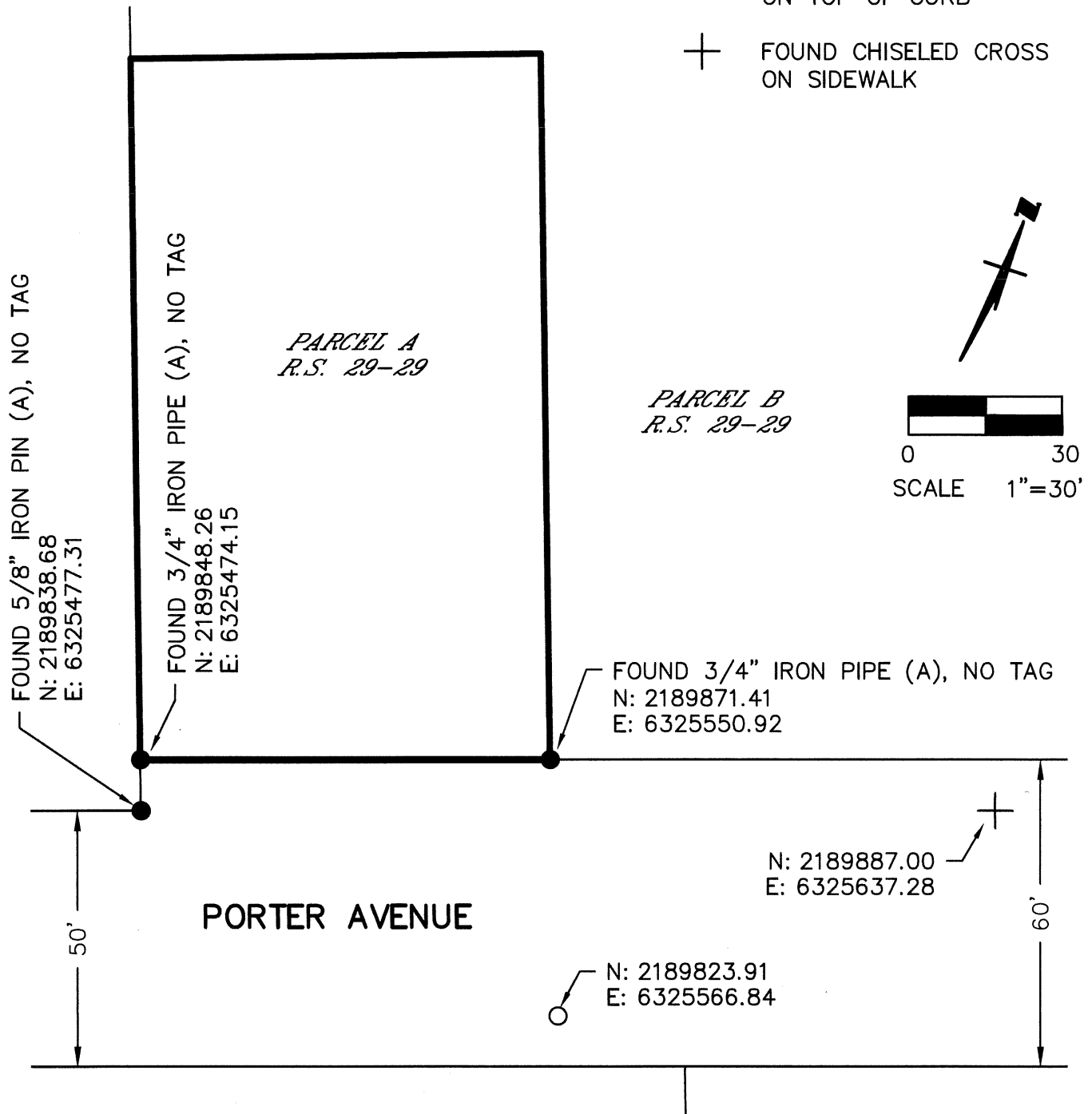
1. RETRACEMENT SURVEY WILL DETERMINE VALIDITY OF MONUMENT LOCATIONS.
2. ALL REFERENCES ARE SAN JOAQUIN COUNTY RECORDS.

**REFERENCE:**

(A) R.S. 29-29

**LEGEND:**

- (M) MEASURED
- R.S. RECORD OF SURVEY, BOOK-PAGE
- FOUND MONUMENT AS NOTED
- SET MAG NAIL & SHINER ON TOP OF CURB
- + FOUND CHISELED CROSS ON SIDEWALK



**WONG ENGINEERS, INC.**  
4578 FEATHER RIVER DRIVE, SUITE A  
STOCKTON, CA 95219 (209) 476-0011  
JULY 2, 2024 PAGE 2 OF 2

**DESCRIPTION:**  
THIS DOCUMENT IS FOR THE PURPOSE OF PRESERVING AND ESTABLISHING TIES TO EXISTING MONUMENTS.