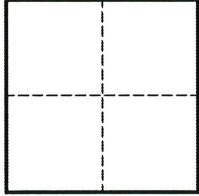


# CORNER RECORD

Agency Index CR-24-263  
Document Number \_\_\_\_\_

City of \_\_\_\_\_ County of SAN JOAQUIN, California  
Brief Legal Description FOUND MONUMENT AT THE INTERSECTION OF TALLAHATCHEY DRIVE AND OZARK COURT.

### CORNER TYPE



- Government Corner
- Meander
- Rancho
- Control
- Property
- Other

Date of Survey SEPTEMBER 23, 2023

### COORDINATES (Optional)

N. \_\_\_\_\_ E. \_\_\_\_\_  
 Elevation \_\_\_\_\_  
 Units  Metric  U.S. Survey Foot  
 Horizontal Datum \_\_\_\_\_  
 Zone \_\_\_\_\_ Epoch Date \_\_\_\_\_  
 Vertical Datum \_\_\_\_\_  
 Complies with Public Resources Code §§8801-8819  
 Complies with Public Resources Code §§8890-8902

PLS Act Ref.:  8765(d)  8771  8773  Other:  
 Corner/Monument:  Left as found  Established  Rebuilt  Pre-Construction  
 Found and tagged  Reestablished  Referenced  Post-Construction

Narrative of corner identified and monument as found, set, reset, replaced, or removed:  
 See sheet #2 for description(s):

FOUND 3/4" IRON PIN WITH PUNCH, IN MONUMENT WELL AT THE INTERSECTION OF TALLAHATCHEY DRIVE AND OZARK COURT PER MAPS AND PLATS, BOOK 22 AT PAGE 87, SAN JOAQUIN COUNTY RECORDS.  
  
 MONUMENT WAS REFERENCED PRIOR TO THE START OF CONSTRUCTION OF A 1" WATER SERVICE REPLACEMENT BY CALIFORNIA WATER SERVICE.

### SURVEYOR'S STATEMENT

This Corner Record was prepared by me or under my direction in conformance with  
 the Professional Land Surveyors' Act on JANUARY 26, 2024  
 Signed [Signature] P.L.S. or R.C.E. No. 9251



### COUNTY SURVEYOR'S STATEMENT

This Corner Record was received July 9, 2024  
 and examined and filed July 30, 2024  
 Signed James E. Hart P.L.S. or R.C.E. No. 8657  
 Title County Surveyor



### County Surveyor's Comment

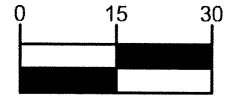
Empty dashed box for County Surveyor's Comment.

LOT 43  
(22 M 87)

LOT 44  
(22 M 87)

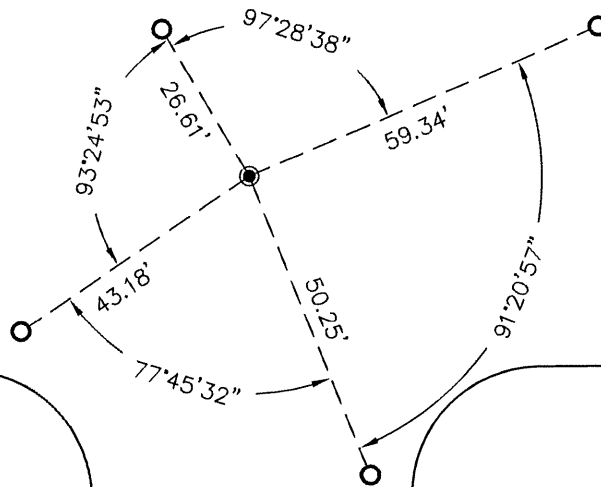
LOT 45  
(22 M 87)

APN: 159-370-44



( SCALE IN FEET )

TALLAHATCHEY DRIVE



LOT 59  
(22 M 87)

OZARK COURT

LOT 58  
(22 M 87)

### LEGEND

- FOUND 3/4" IRON PIN WITH PUNCH, IN MONUMENT WELL AT THE INTERSECTION OF TALLAHATCHEY DRIVE AND OZARK COURT PER MAPS AND PLATS, BOOK 22 AT PAGE 87, SAN JOAQUIN COUNTY RECORDS.
- SET MAG AND WASHER STAMPED "BKF CONTROL" AT TOP OF CURB.
- M MAPS AND PLATS, SAN JOAQUIN COUNTY RECORDS.



1730 N. FIRST STREET  
 SUITE 600  
 SAN JOSE, CA 95112  
 (408) 467-9100  
 www.bkf.com

SUBJECT PRE-CONSTRUCTION CORNER RECORD AT THE INTERSECTION OF TALLAHATCHEY DR AND OZARK CT

JOB NO. 20191483-STOCKTON MON PRESERVATION  
 BY CCB APPR. RDV DATE 1-26-2024