

CORNER RECORD

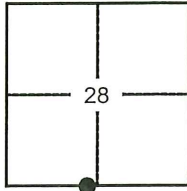
Agency Index: CR-24-261

Document Number: _____

City of MANTECA

County of SAN JOAQUIN, California

Brief Legal Description MONUMENT AT THE INTERSECTION OF LOUISE AVENUE AND MT DEW AVENUE.



T.1S, R.7E

CORNER TYPE

- Government Corner
- Meander
- Rancho
- Control
- Property
- Other

Date of Survey 06-10-2024

COORDINATES (Optional)

N. _____ E. _____

Elevation _____

Units Metric U.S. Survey Foot

Horizontal Datum _____

Zone _____ Epoch Date _____

Vertical Datum _____

Complies with Public Resources Code SS8801-8819

Complies with Public Resources Code SS8890-8902

PLS Act Ref: 8765(d) 8771 8773 Other:

Corner/ Monument: Left as found Established Rebuilt Pre-Construction

Found and Tagged Reestablished Referenced Post-Construction

Narrative of corner identified and monument as found, set, reset, replaced, or removed:

See sheet #2 for description(s):

FOUND ONE (1) 2.5" BRASS DISK, STAMPED "RCE 18420", IN A MONUMENT WELL AT THE INTERSECTION OF LOUISE AVENUE AND MT DEW AVENUE (NO REFERENCE FOUND).

SET FOUR (4) CONCRETE NAILS WITH BRASS TAGS, MARKED "L.S. 6953", AS WITNESS CORNERS. ALL AS SHOWN ON PAGE 2.

SURVEYOR'S STATEMENT

This Corner Record was prepared by me or under my direction in conformance with the Land Surveyors' Act on JUNE 17, 2024,



Signed [Signature] P.L.S. or R.C.E. Number 6953

COUNTY SURVEYOR'S STATEMENT

This Corner Record was received June 26, 2024

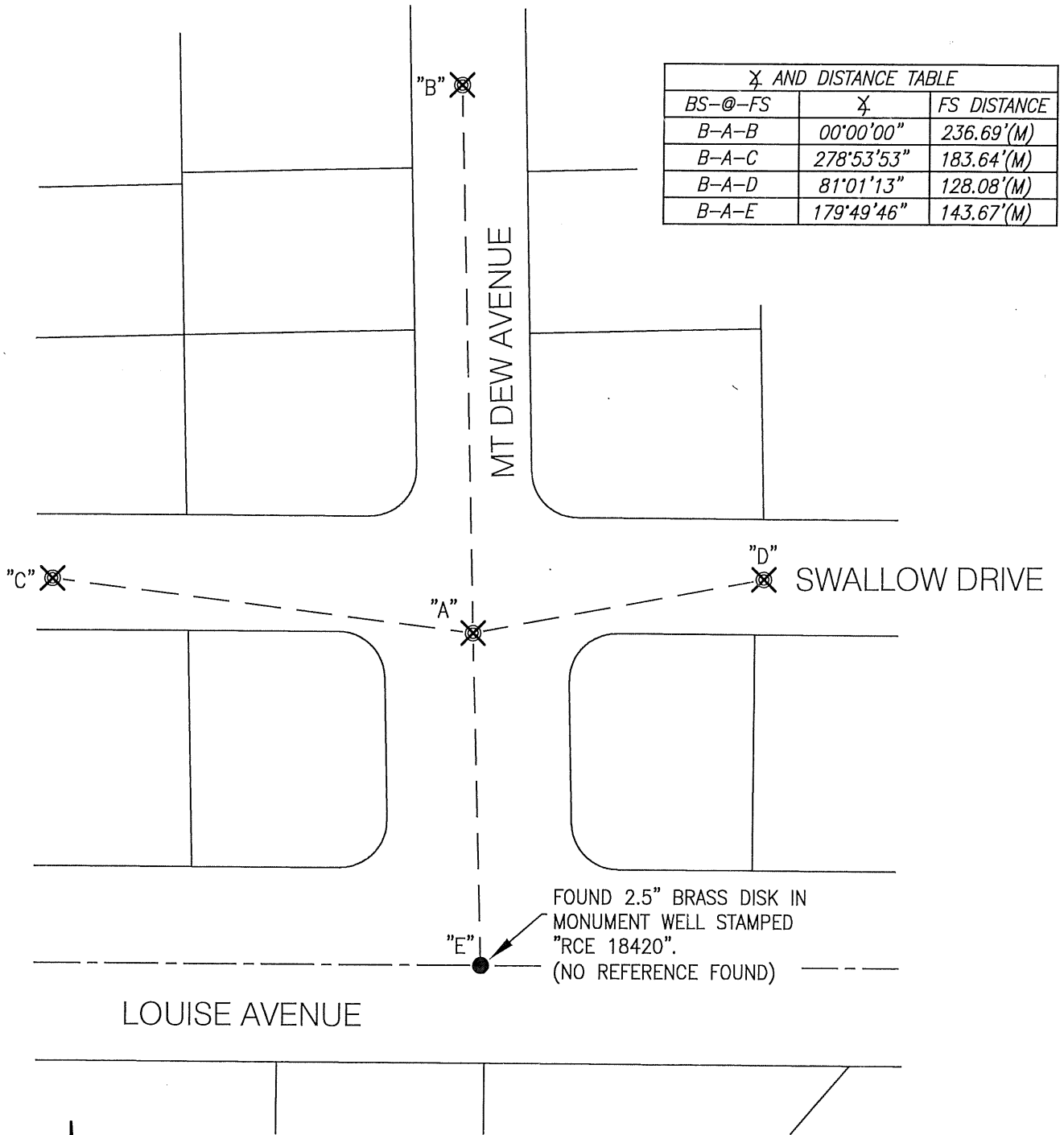
and examined and filed July 12, 2024

Signed James E. Hart P.L.S. or R.C.E. No: 8657

Title County Surveyor





County Surveyor's Comment : _____



X AND DISTANCE TABLE		
BS-@-FS	X	FS DISTANCE
B-A-B	00°00'00"	236.69'(M)
B-A-C	278°53'53"	183.64'(M)
B-A-D	81°01'13"	128.08'(M)
B-A-E	179°49'46"	143.67'(M)

LOUISE AVENUE

LEGEND:

-  SET CONCRETE NAILS W/ BRASS TAGS MARKED "L.S. 6953"
-  FOUND MONUMENT AS NOTED
- S.J.C.R. DENOTES SAN JOAQUIN COUNTY RECORDS
- (M) MEASURED DISTANCE. ALL DISTANCES ARE MEASURED UNLESS OTHERWISE NOTED



NOT TO SCALE