

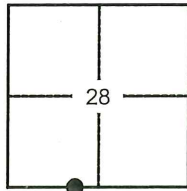
CORNER RECORD

Agency Index: CR-24-260

Document Number: _____

City of MANTECA County of SAN JOAQUIN, California

Brief Legal Description MONUMENT AT THE INTERSECTION OF LOUISE AVENUE AND TULIP PLACE.



T.1S, R.7E

CORNER TYPE

- Government Corner
- Meander
- Rancho
- Control
- Property
- Other

Date of Survey 06-10-2024

COORDINATES (Optional)

N. _____ E. _____

Elevation _____

Units Metric U.S. Survey Foot

Horizontal Datum _____

Zone _____ Epoch Date _____

Vertical Datum _____

Complies with Public Resources Code SS8801-8819

Complies with Public Resources Code SS8890-8902

PLS Act Ref: 8765(d) 8771 8773 Other:

Corner/
Monument: Left as found Established Rebuilt Pre-Construction

Found and Tagged Reestablished Referenced Post-Construction

Narrative of corner identified and monument as found, set, reset, replaced, or removed:

See sheet #2 for description(s):

FOUND ONE (1) 2.5" BRASS DISK, STAMPED "RCE 18420", IN A MONUMENT WELL AT THE INTERSECTION OF LOUISE AVENUE AND TULIP PLACE (NO REFERENCE FOUND).

SET FOUR (4) CONCRETE NAILS WITH BRASS TAGS, MARKED "L.S. 6953", AS WITNESS CORNERS. ALL AS SHOWN ON PAGE 2.

SURVEYOR'S STATEMENT

This Corner Record was prepared by me or under my direction in conformance with the Land Surveyors' Act on JUNE 17, 2024,



Signed [Signature] P.L.S. or R.C.E. Number 6953

COUNTY SURVEYOR'S STATEMENT

This Corner Record was received June 26, 2024

and examined and filed July 12, 2024

Signed James E Hart P.L.S. or R.C.E. No: 8657

Title County Surveyor



County Surveyor's Comment _____

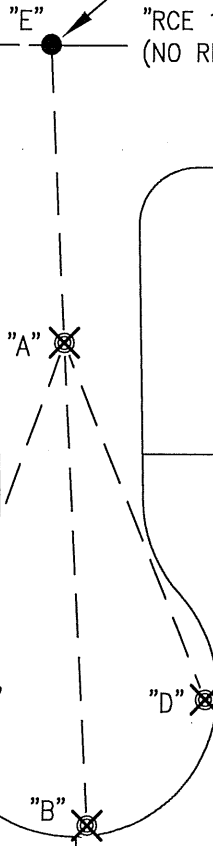
SPRINGTIME
AVE

X AND DISTANCE TABLE		
BS-@-FS	X	FS DISTANCE
B-A-B	00°00'00"	242.95'(M)
B-A-C	07°51'49"	113.65'(M)
B-A-D	348°56'54"	190.29'(M)
B-A-E	1977°59'15"	160.02'(M)

FOUND 2.5" BRASS DISK IN
MONUMENT WELL STAMPED
"RCE 18420".
(NO REFERENCE FOUND)

LOUISE AVENUE

TULIP PLACE



LEGEND:



SET CONCRETE NAILS W/ BRASS
TAGS MARKED "L.S. 6953"



FOUND MONUMENT AS NOTED

S.J.C.R.
(M)

DENOTES SAN JOAQUIN COUNTY RECORDS
MEASURED DISTANCE. ALL DISTANCES ARE
MEASURED UNLESS OTHERWISE NOTED



NOT TO SCALE