

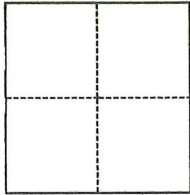
# CORNER RECORD

Agency Index CR-24-256  
Document Number \_\_\_\_\_

City of STOCKTON County of SAN JOAQUIN, California  
Brief Legal Description THE CENTER 100 FEET OF LOT 10, PER R.S. 27-18, S.J.C.R.

### CORNER TYPE

### COORDINATES (Optional)



- Government Corner
- Meander
- Rancho
- Control
- Property
- Other

Date of Survey May 22, 2024

N. \_\_\_\_\_ E. \_\_\_\_\_  
 Elevation \_\_\_\_\_  
 Units  Metric  U.S. Survey Foot  
 Horizontal Datum \_\_\_\_\_  
 Zone \_\_\_\_\_ Epoch Date \_\_\_\_\_  
 Vertical Datum \_\_\_\_\_  
 Complies with Public Resources Code §§8801-8819  
 Complies with Public Resources Code §§8890-8902

- PLS Act Ref.:  8765(d)  8771  8773  Other: \_\_\_\_\_
- Corner/Monument:  Left as found  Established  Rebuilt  Pre-Construction  
 Found and tagged  Reestablished  Referenced  Post-Construction

Narrative of corner identified and monument as found, set, reset, replaced, or removed:  
 See sheet #2 for description(s):

SEE SHEET 2 OF 2 FOR MONUMENTS FOUND AND SET.

### SURVEYOR'S STATEMENT

This Corner Record was prepared by me or under my direction in conformance with  
 the Professional Land Surveyors' Act on 6/24/2024  
 Signed Walter John Shoup P.L.S. or R.C.E. No. L-7736

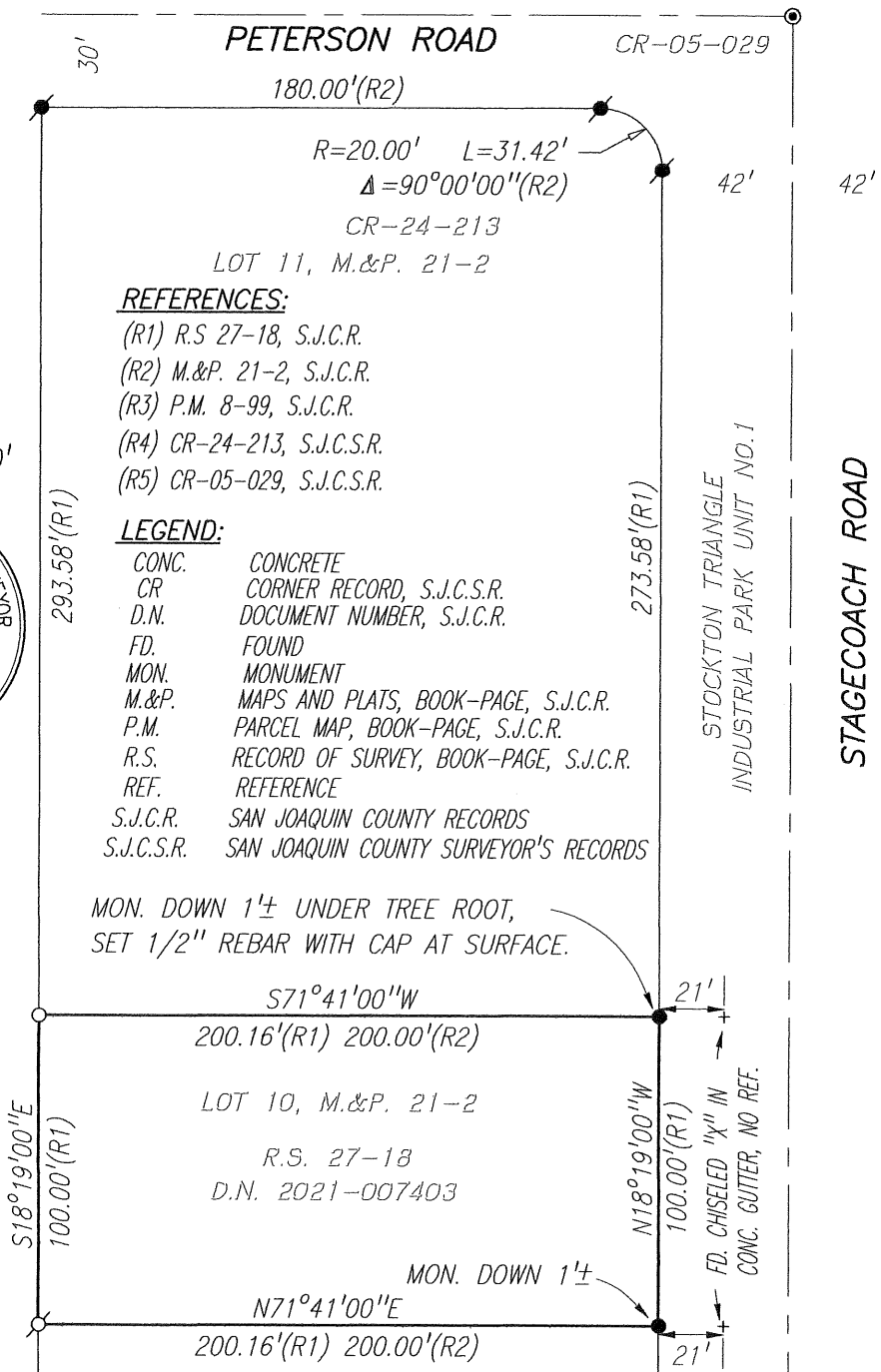
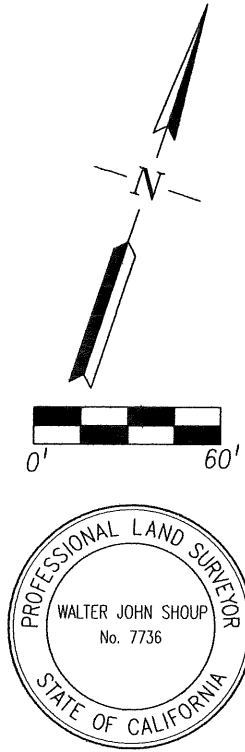


### COUNTY SURVEYOR'S STATEMENT

This Corner Record was received June 25, 2024  
 and examined and filed July 12, 2024  
 Signed James E. Hart P.L.S. or R.C.E. No. 8657  
 Title County Surveyor

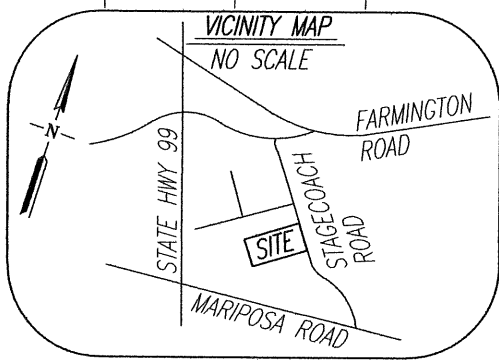


County Surveyor's Comment



**MONUMENTS FOUND:**

- SET 5/8" REBAR, 24" LONG, WITH CAP STAMPED "PLS 7736"
- SET GIN PIN AND WASHER STAMPED "PLS 7736"
- FD. 3/4" IRON PIN WITH BRASS TAG STAMPED "RCE 8189" PER (R1), UNLESS OTHERWISE NOTED.
- FD. 3/4" IRON PIN WITH CAP STAMPED "LS 7600" PER (R4)
- FD. 5/8" REBAR WITH CAP STAMPED "CITY OF STOCKTON", IN MONUMENT WELL PER (R5)
- +— FD. CHISELED CROSS, NO REF.



Scale: 1"=60'	<b>CORNER RECORD</b> <b>EXHIBIT MAP</b>	Date: 06/24/24
Job No.: 21-024		DWG: 21024CR.DWG