

CORNER RECORD

Agency Index CR-24-252

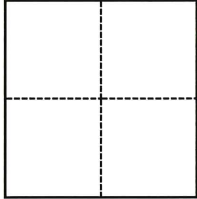
Document Number _____

City of Stockton County of San Joaquin, California

Brief Legal Description Intersection of Arch-Airport Road & "B" Street

CORNER TYPE

COORDINATES (Optional)



- Government Corner
- Meander
- Rancho
- Control
- Property
- Other

Date of Survey April 17, 2024

N. _____ E. _____

Elevation _____

Units Metric U.S. Survey Foot

Horizontal Datum _____

Zone _____ Epoch Date _____

Vertical Datum _____

Complies with Public Resources Code §§8801-8819

Complies with Public Resources Code §§8890-8902

PLS Act Ref.:

8765(d)

8771

8773

Other:

Corner/
Monument:

Left as found

Established

Rebuilt

Pre-Construction

Found and tagged

Reestablished

Referenced

Post-Construction

Narrative of corner identified and monument as found, set, reset, replaced, or removed:

See sheet #2 for description(s):

SURVEYOR'S STATEMENT

This Corner Record was prepared by me or under my direction in conformance with

the Professional Land Surveyors' Act on June 20, 2024

Signed _____ P.L.S. or R.C.E. No. 8080



COUNTY SURVEYOR'S STATEMENT

This Corner Record was received June 25, 2024

and examined and filed July 11, 2024

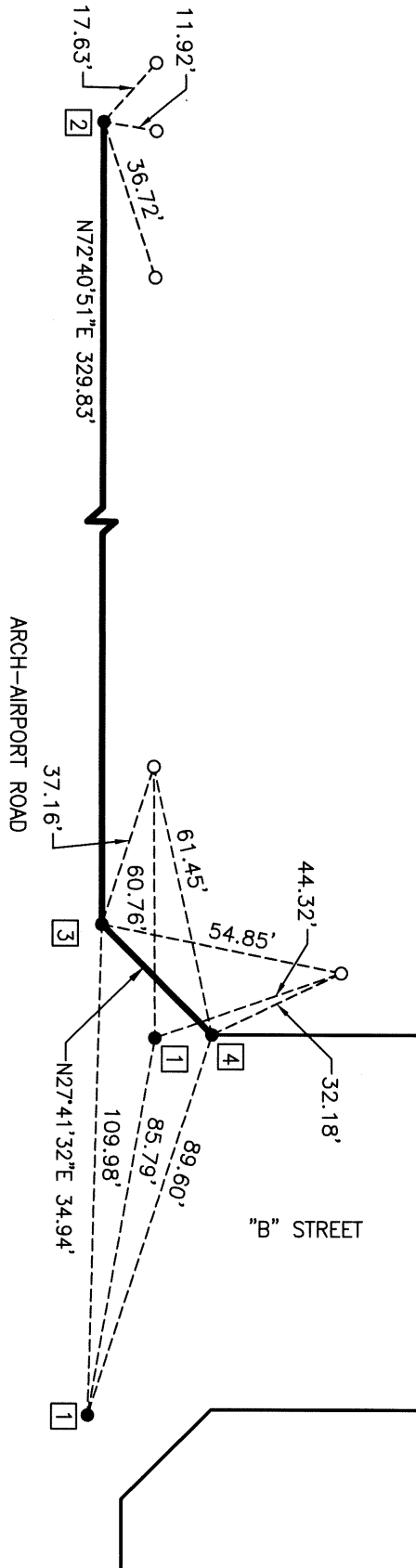
Signed James E Hart P.L.S. or R.C.E. No. 8657

Title County Surveyor

County Surveyor's Comment



SCALE
1"=40'



LEGEND:
 S.J.C.S.R. SAN JOAQUIN COUNTY SURVEYOR'S RECORDS
 C.R. CORNER RECORD - S.J.C.S.R.
 ● FOUND MONUMENT AS NOTED
 ○ SET MAG NAIL AND BRASS WASHER STAMPED "PLS8080"

FOUND MONUMENT TABLE:

1	2	3	4
CHISELED CROSS PER (R2)	FOUND 3/4" IRON PIPE PLUGGED "L.S.4709" PER (R1)	FOUND NAIL & BRASS TAG STAMPED "L.S.6953" PER (R1)	FOUND NAIL & BRASS TAG STAMPED "L.S.4709" PER (R1)

BASIS OF BEARINGS:

THE NORTH LINE OF ARCH-AIRPORT ROAD AS SHOWN ON C.R. 19-35, BEING S72°40'51"W.

REFERENCES:

(R1) C.R. 19-35, S.J.C.S.R.
 (R2) C.R. 22-072, S.J.C.S.R.