

CORNER RECORD

Agency Index CR-24-251

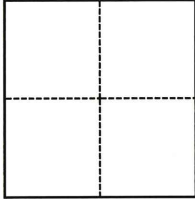
Document Number _____

City of Stockton County of San Joaquin, California

Brief Legal Description Intersection of Arch-Airport Road & Alitalia Avenue

CORNER TYPE

COORDINATES (Optional)



- Government Corner
- Meander
- Rancho
- Control
- Property
- Other

Date of Survey April 17, 2024

N. _____ E. _____

Elevation _____

Units Metric U.S. Survey Foot

Horizontal Datum _____

Zone _____ Epoch Date _____

Vertical Datum _____

Complies with Public Resources Code §§8801-8819

Complies with Public Resources Code §§8890-8902

PLS Act Ref.: 8765(d) 8771 8773 Other:

Corner/Monument: Left as found Established Rebuilt Pre-Construction

Found and tagged Reestablished Referenced Post-Construction

Narrative of corner identified and monument as found, set, reset, replaced, or removed:

See sheet #2 for description(s):

SURVEYOR'S STATEMENT

This Corner Record was prepared by me or under my direction in conformance with the Professional Land Surveyors' Act on June 20, 2024

Signed [Signature] P.L.S. or R.C.E. No. 8080



COUNTY SURVEYOR'S STATEMENT

This Corner Record was received June 25, 2024

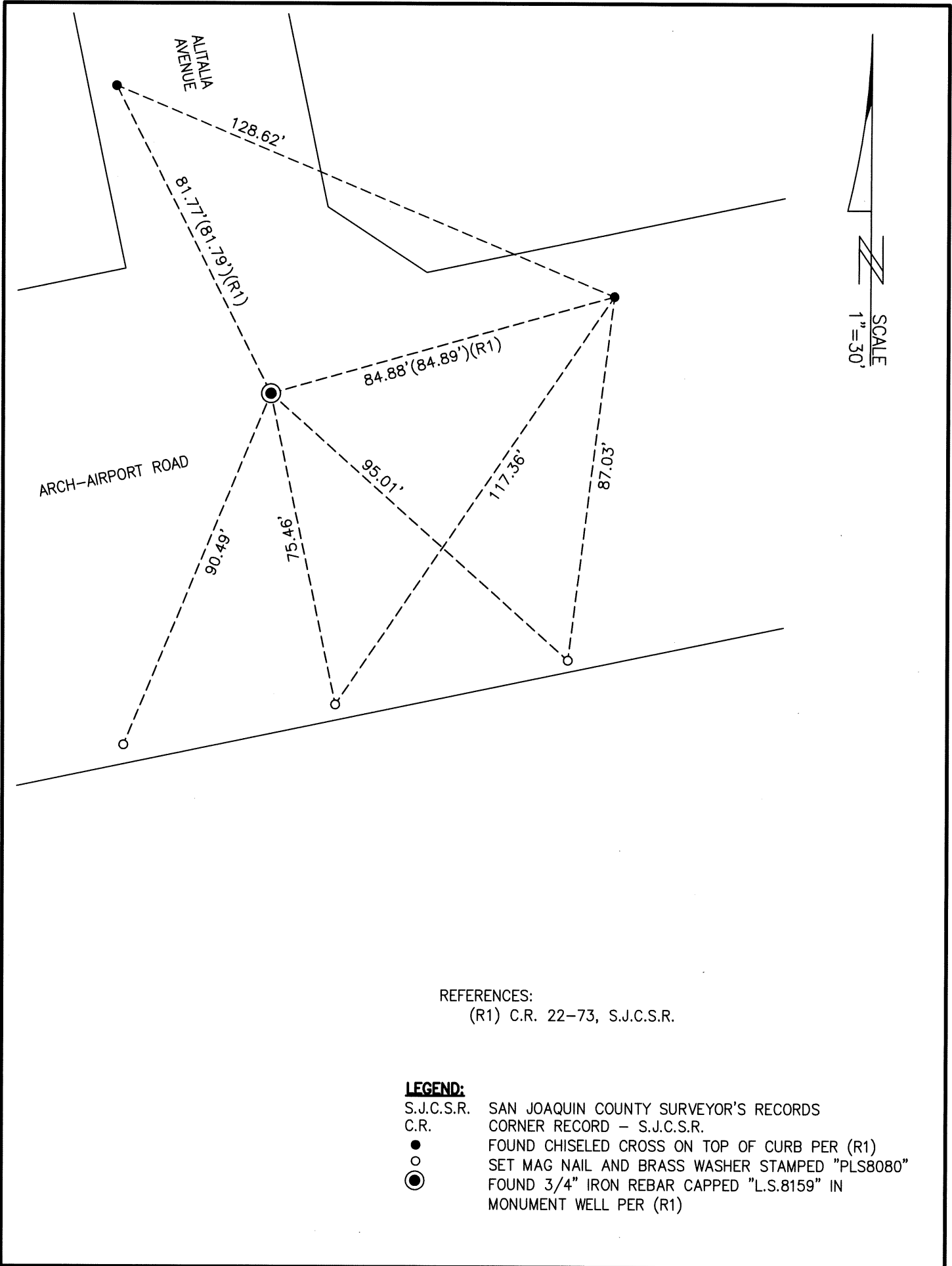
and examined and filed July 11, 2024

Signed James E. Hart P.L.S. or R.C.E. No. 8657

Title County Surveyor

County Surveyor's Comment





REFERENCES:
 (R1) C.R. 22-73, S.J.C.S.R.

LEGEND:

- S.J.C.S.R. SAN JOAQUIN COUNTY SURVEYOR'S RECORDS
- C.R. CORNER RECORD - S.J.C.S.R.
- FOUND CHISELED CROSS ON TOP OF CURB PER (R1)
- SET MAG NAIL AND BRASS WASHER STAMPED "PLS8080"
- ⊙ FOUND 3/4" IRON REBAR CAPPED "L.S.8159" IN MONUMENT WELL PER (R1)