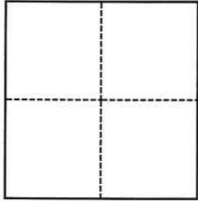


# CORNER RECORD

Agency Index CR-24-246

Document Number \_\_\_\_\_

City of \_\_\_\_\_ County of San Joaquin, CaliforniaBrief Legal Description Rod at the intersection of Calariva Dr. and Delano Ave**CORNER TYPE****COORDINATES (Optional)**

- Government Corner     Control  
 Meander                     Property  
 Rancho                          Other

N. \_\_\_\_\_ E. \_\_\_\_\_

Elevation \_\_\_\_\_

Units     Metric             U.S. Survey FootHorizontal Datum                    NAD 83Zone 3            Epoch Date 1991.35

Vertical Datum \_\_\_\_\_

 Complies with Public Resources Code §§8801-8819 Complies with Public Resources Code §§8890-8902

PLS Act Ref.:

 8765(d) 8771 8773 Other:Corner/  
Monument: Left as found Established Rebuilt Pre-Construction Found and tagged Reestablished Referenced Post-Construction

Narrative of corner identified and monument as found, set, reset, replaced, or removed:

 See sheet #2 for description(s):

This Corner Record is the pre-drilling exploration location of found monuments within a 50 ft radius of the proposed boring location. After drilling activities are complete a follow up survey will be performed to confirm that no monuments have been disturbed. If monuments have been disturbed a durable replacement monument will be installed and a Post-Construction Corner Record will be completed and submitted.

**SURVEYOR'S STATEMENT**

This Corner Record was prepared by me or under my direction in conformance with

the Professional Land Surveyors' Act on

JUNE 11, 2024

Signed

P.L.S. or R.C.E. No.

8265**COUNTY SURVEYOR'S STATEMENT**

This Corner Record was received

June 12, 2024

and examined and filed

July 2, 2024

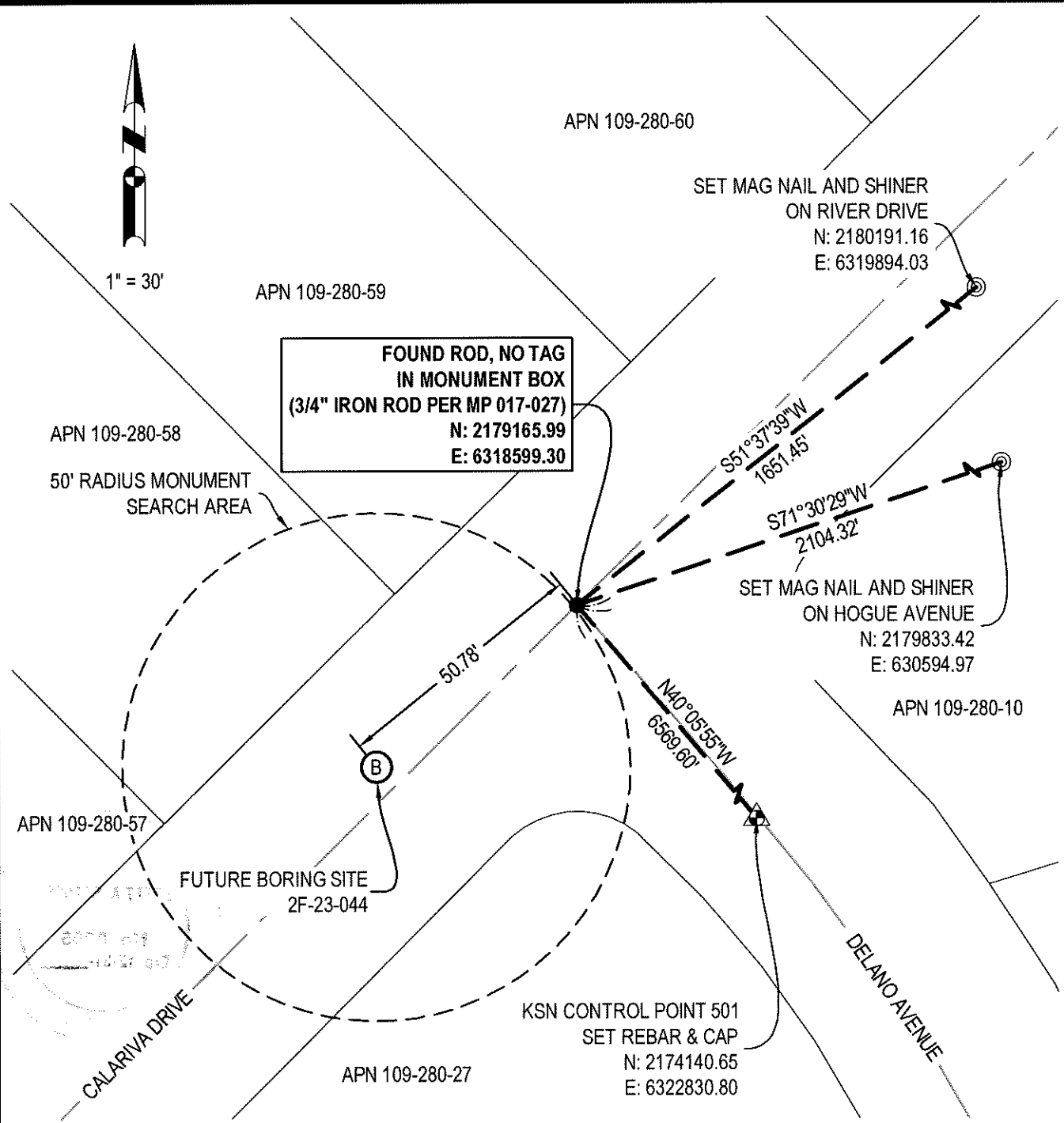
Signed

P.L.S. or R.C.E. No.

8657

Title

County Surveyor**County Surveyor's Comment**



**SURVEY CONTROL STATEMENT**

COORDINATES, BEARINGS AND DISTANCES SHOWN ARE BASED ON THE NORTH AMERICAN DATUM OF 1983 (NAD 83) CONVERTED TO THE CALIFORNIA COORDINATE SYSTEM OF 1983, ZONE 3 (CCS83-Z3) AS REFERENCED BY AVAILABLE CITY OF STOCKTON AND NGS PUBLISHED CONTROL MONUMENTS. UNITS SHOWN ARE BASED ON THE U.S. SURVEY FOOT, EPOCH DATE 1991.35 ADJUSTMENT. ALL COORDINATES AND DISTANCES ARE GRID, TO CONVERT GRID DISTANCES TO GROUND, MULTIPLY BY 1.00005972. THE CONVERGENCE ANGLE IS -0°30'26". THE CSF WAS DETERMINED AT CONTROL POINT 501.

**NOTES:**

THIS SURVEY DOES NOT DEFINE BOUNDARY OR RIGHT OF WAY LINES. PARCEL LINES AND ROAD CENTERLINES SHOWN HEREON ARE FOR GENERAL LOCATION AND INFORMATION PURPOSES ONLY TO LOCATE THE PROJECT SITE. SAID LINWORK IS BASED UPON 1/10/2024 SAN JOAQUIN COUNTY GIS PARCEL DATA.



MP: MAPS AND PLATS, SAN JOAQUIN COUNTY RECORDS