

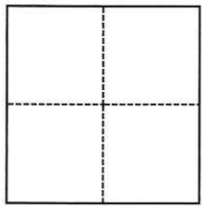
CORNER RECORD

Agency Index CR-24-242
Document Number _____

City of _____ County of San Joaquin, California
Brief Legal Description Monuments at the intersection of River Dr. and Telegraph Avenue

CORNER TYPE

COORDINATES (Optional)



- Government Corner
- Meander
- Rancho
- Control
- Property
- Other

Date of Survey May 8, 2024

N. _____ E. _____
 Elevation _____
 Units Metric U.S. Survey Foot
 Horizontal Datum NAD 83
 Zone 3 Epoch Date 1991.35
 Vertical Datum _____
 Complies with Public Resources Code §§8801-8819
 Complies with Public Resources Code §§8890-8902

PLS Act Ref.: 8765(d) 8771 8773 Other:
 Corner/Monument: Left as found Established Rebuilt Pre-Construction
 Found and tagged Reestablished Referenced Post-Construction

Narrative of corner identified and monument as found, set, reset, replaced, or removed:
 See sheet #2 for description(s):

This Corner Record is the pre-drilling exploration location of found monuments within a 50 ft radius of the proposed boring location. After drilling activities are complete a follow up survey will be performed to confirm that no monuments have been disturbed. If monuments have been disturbed a durable replacement monument will be installed and a Post-Construction Corner Record will be completed and submitted.

SURVEYOR'S STATEMENT

This Corner Record was prepared by me or under my direction in conformance with
 the Professional Land Surveyors' Act on June 6, 2024
 Signed Brett A. Setness P.L.S. or R.C.E. No. 8265

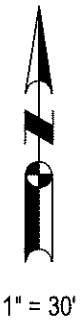
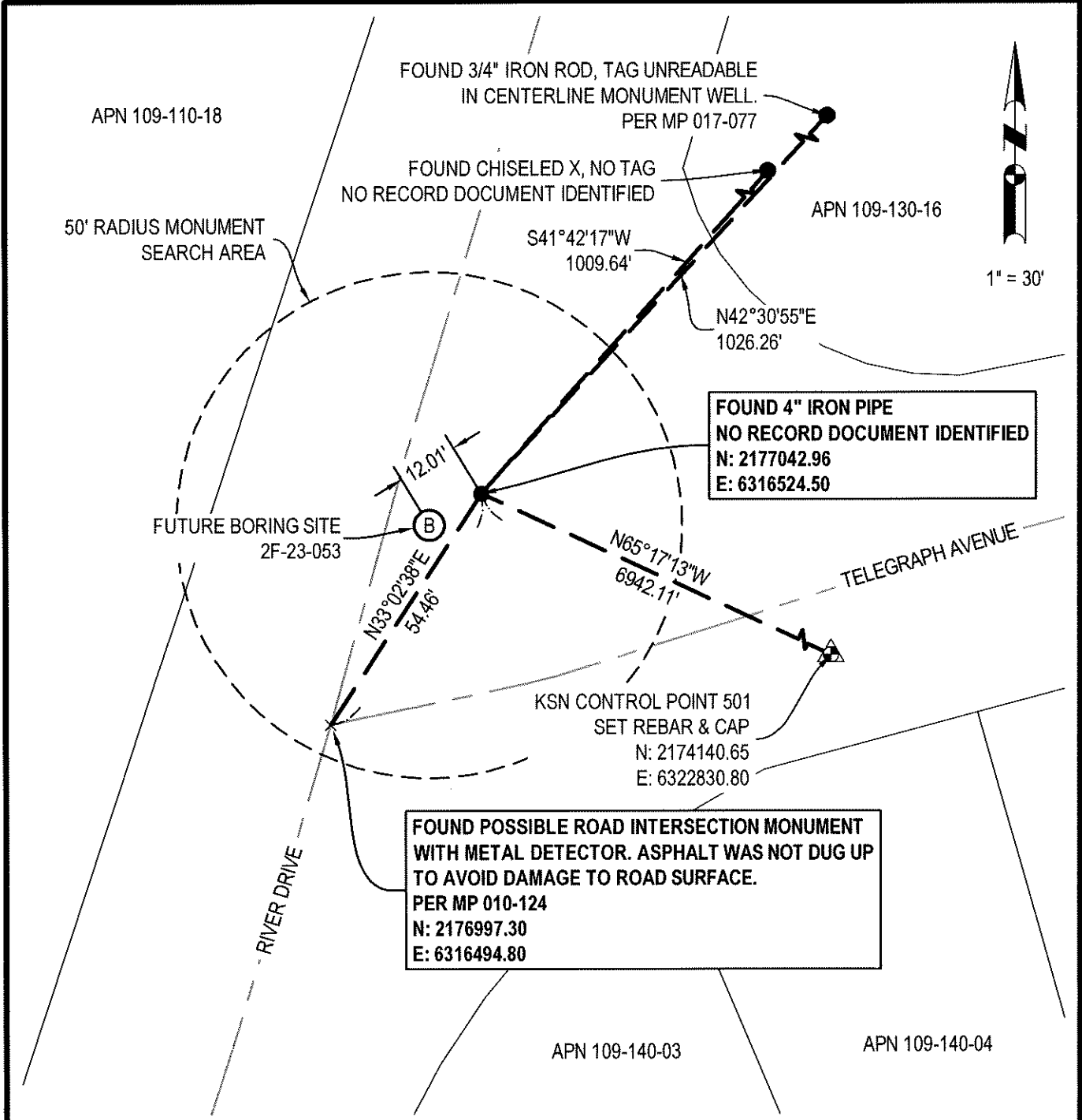


COUNTY SURVEYOR'S STATEMENT

This Corner Record was received June 6, 2024
 and examined and filed June 11, 2024
 Signed James E. Hart P.L.S. or R.C.E. No. 8657
 Title County Surveyor



County Surveyor's Comment



SURVEY CONTROL STATEMENT

COORDINATES, BEARINGS AND DISTANCES SHOWN ARE BASED ON THE NORTH AMERICAN DATUM OF 1983 (NAD 83) CONVERTED TO THE CALIFORNIA COORDINATE SYSTEM OF 1983, ZONE 3 (CCS83-Z3) AS REFERENCED BY AVAILABLE CITY OF STOCKTON AND NGS PUBLISHED CONTROL MONUMENTS. UNITS SHOWN ARE BASED ON THE U.S. SURVEY FOOT, EPOCH DATE 1991.35 ADJUSTMENT. ALL COORDINATES AND DISTANCES ARE GRID, TO CONVERT GRID DISTANCES TO GROUND, MULTIPLY BY 1.00005972. THE CONVERGENCE ANGLE IS -0°30'26". THE CSF WAS DETERMINED AT CONTROL POINT 501.

NOTES:

THIS SURVEY DOES NOT DEFINE BOUNDARY OR RIGHT OF WAY LINES. PARCEL LINES AND ROAD CENTERLINES SHOWN HEREON ARE FOR GENERAL LOCATION AND INFORMATION PURPOSES ONLY TO LOCATE THE PROJECT SITE. SAID LINEWORK IS BASED UPON 1/10/2024 SAN JOAQUIN COUNTY GIS PARCEL DATA.



MP: MAPS AND PLATS, SAN JOAQUIN COUNTY RECORDS