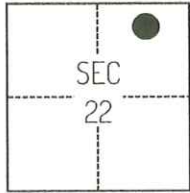


CORNER RECORD

Agency Index CR-24-228
Document Number _____

City of STOCKTON County of SAN JOAQUIN, California
Brief Legal Description FOUND MONUMENTS NEAR THE EAST SIDE OF GEORGIA AVENUE AND WEST SIDE OF LEVER BOULEVARD.



TIN/R6E

CORNER TYPE

- Government Corner
- Meander
- Rancho
- Control
- Property
- Other

Date of Survey February 7, 2023

COORDINATES (Optional)

N. _____ E. _____
 Elevation _____
 Units Metric U.S. Survey Foot
 Horizontal Datum _____
 Zone _____ Epoch Date _____
 Vertical Datum _____
 Complies with Public Resources Code §§8801-8819
 Complies with Public Resources Code §§8890-8902

- PLS Act Ref.: 8765(d) 8771 8773 Other:
- Corner/Monument: Left as found Established Rebuilt Pre-Construction
 Found and tagged Reestablished Referenced Post-Construction

Narrative of corner identified and monument as found, set, reset, replaced, or removed:

See sheet #2 for description(s):

SURVEYOR'S STATEMENT

This Corner Record was prepared by me or under my direction in conformance with
 the Professional Land Surveyors' Act on April 16, 2024
 Signed [Signature] P.L.S. or R.C.E. No. 8489

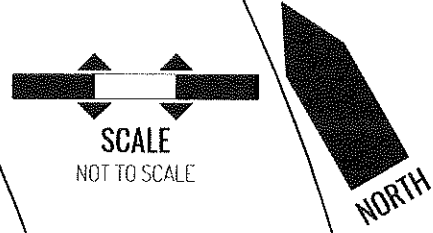
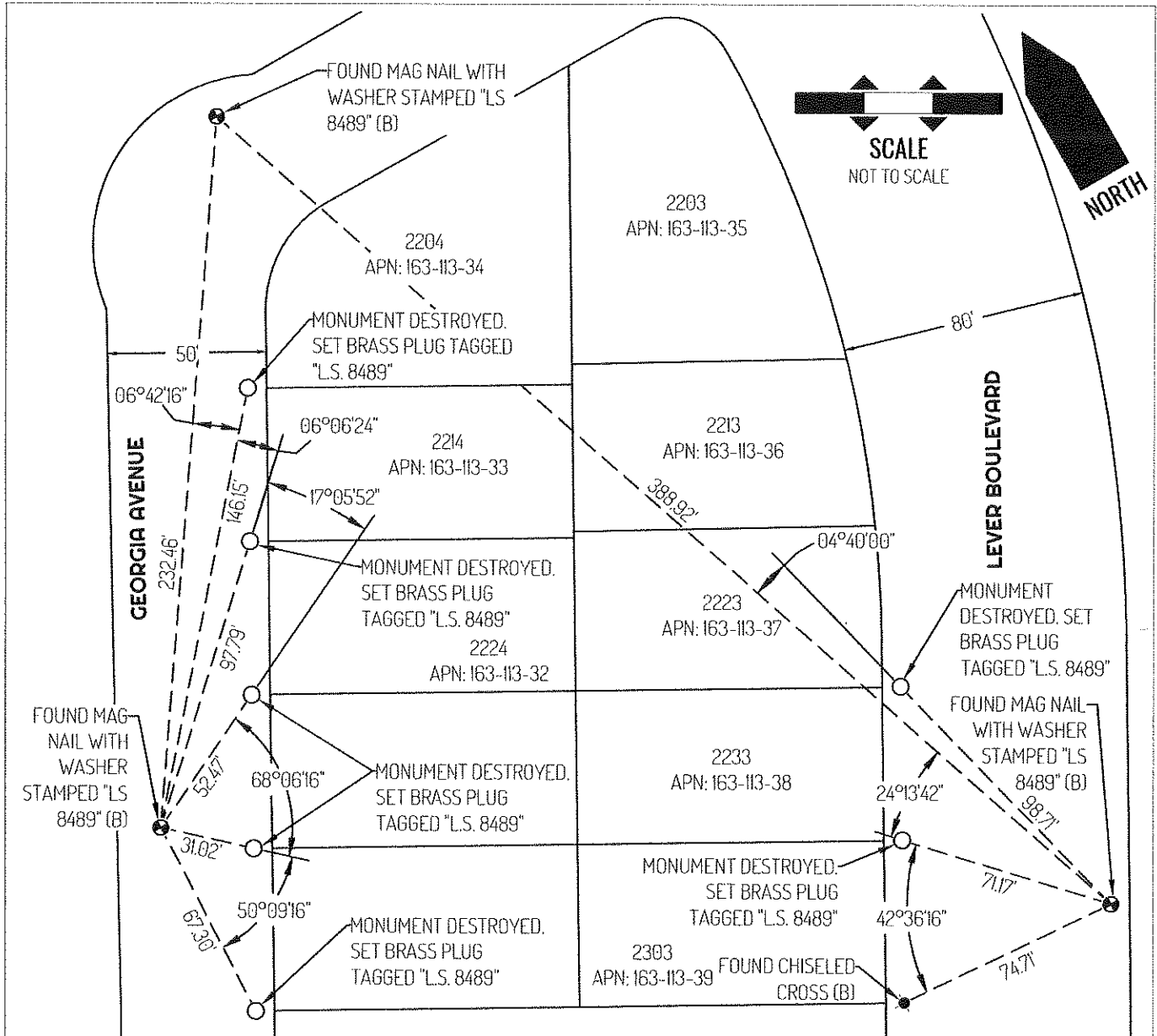


COUNTY SURVEYOR'S STATEMENT

This Corner Record was received June 10, 2024
 and examined and filed June 21, 2024
 Signed James E. Hart P.L.S. or R.C.E. No. 8657
 Title County Surveyor



County Surveyor's Comment



LEGEND

- FOUND MAG NAIL WITH WASHER STAMPED "LS 8489"
- FOUND CHISELED CROSS
- SET BRASS PLUG TAGGED "L.S. 8489"
- 435 REFERENCE STREET ADDRESS
- APN ASSESSOR'S PARCEL NUMBER
- PM PARCEL MAP, SAN JOAQUIN COUNTY RECORDS

REFERENCES

- (A) 9-PM-75
- (B) CORNER RECORD 22-270, SAN JOAQUIN COUNTY SURVEYOR'S RECORDS

LINETYPES

- TIE LINE
- LOT LINE