

CORNER RECORD

Agency Index CR-24-224

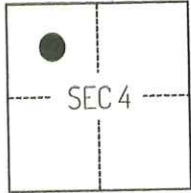
Document Number _____

City of STOCKTON County of SAN JOAQUIN, California

Brief Legal Description PORTION OF SECTION 4 TOWNSHIP 1 NORTH RANGE 6 EAST.

CORNER TYPE

COORDINATES (Optional)



T1N/R6E

- Government Corner Control
 Meander Property
 Rancho Other

Date of Survey December 21, 2022

N. _____ E. _____

Elevation _____

Units Metric U.S. Survey Foot

Horizontal Datum _____

Zone _____ Epoch Date _____

Vertical Datum _____

Complies with Public Resources Code §§8801-8819

Complies with Public Resources Code §§8890-8902

PLS Act Ref.: 8765(d) 8771 8773 Other:

Corner/ Left as found Established Rebuilt Pre-Construction

Monument: Found and tagged Reestablished Referenced Post-Construction

Narrative of corner identified and monument as found, set, reset, replaced, or removed:

See sheet #2 for description(s):

SURVEYOR'S STATEMENT

This Corner Record was prepared by me or under my direction in conformance with the Professional Land Surveyors' Act on June 10, 2023

Signed Scott L. Blake P.L.S. or R.C.E. No. 8489



COUNTY SURVEYOR'S STATEMENT

This Corner Record was received June 10, 2024

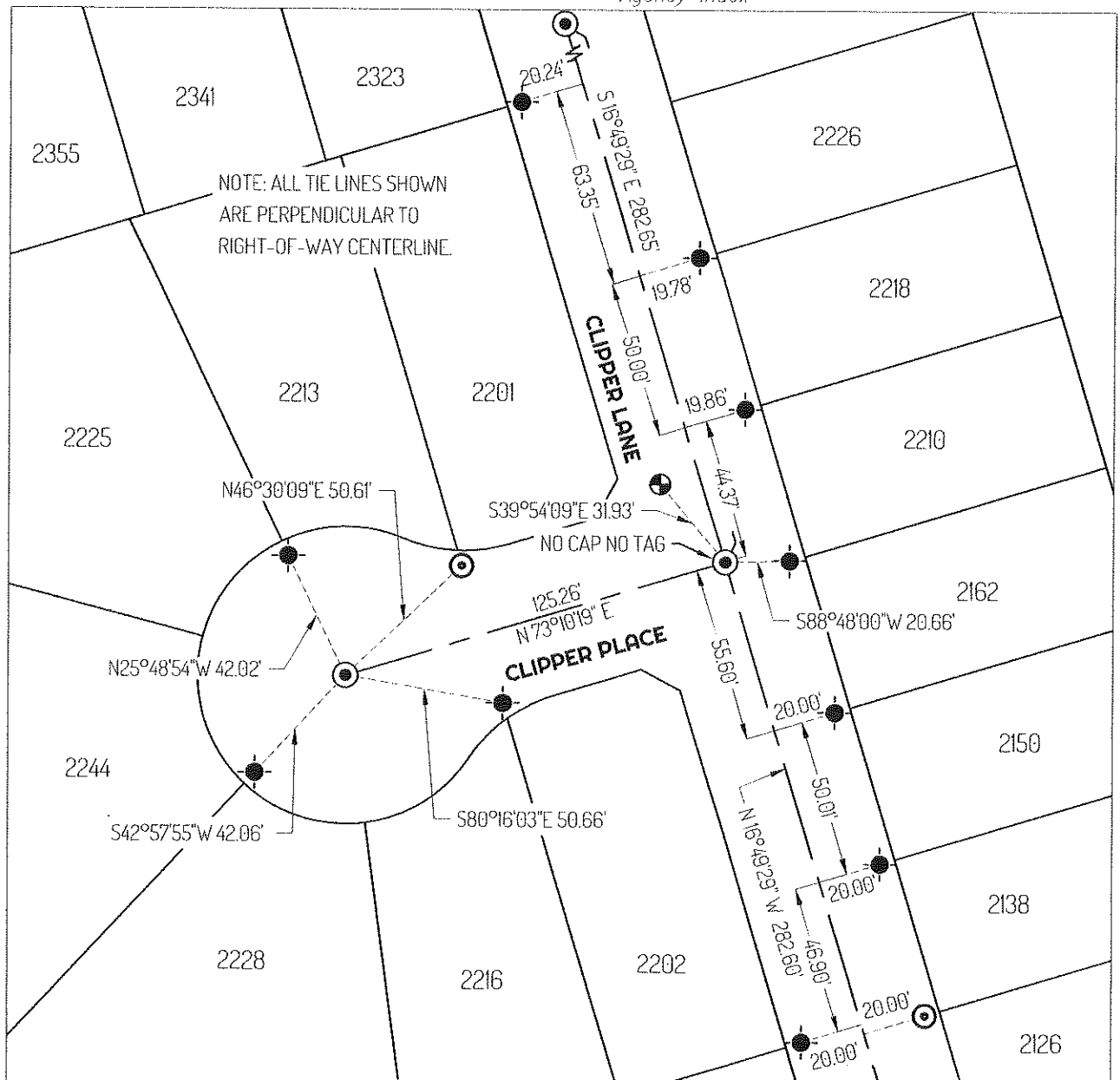
and examined and filed June 21, 2024

Signed James E. Hart P.L.S. or R.C.E. No. 8657

Title County Surveyor

County Surveyor's Comment _____





LEGEND

- FOUND CHISELED CROSS ON SIDWALK SET AS 5 FOOT WITNESS CORNER UNDISTURBED PER (A)
- MONUMENT DESTROYED AND RESET WITH BRASS PLUG TAGGED "LS 8489"
- FOUND CENTERLINE MONUMENT IN WELL UNDISTURBED PER (A)
- FOUND PAVEMENT NAIL UNDISTURBED PER (A)
- 435 REFERENCE STREET ADDRESS

LINETYPES

- RIGHT-OF-WAY CENTERLINE
- TIE LINE
- LOT LINE

REFERENCES

- (A) CORNER RECORD 23-079, SAN JOAQUIN COUNTY SURVEYOR'S RECORDS

