

# CORNER RECORD

Agency Index CR-24-221  
Document Number \_\_\_\_\_

City of STOCKTON County of SAN JOAQUIN, California

Brief Legal Description FOUND CHISELED CROSSES ALONG WEST SIDE OF SACRAMENTO STREET.



C.M. WEBER GRANT

### CORNER TYPE

- Government Corner
- Meander
- Rancho
- Control
- Property
- Other

Date of Survey January 25, 2022

### COORDINATES (Optional)

- N. \_\_\_\_\_ E. \_\_\_\_\_  
 Elevation \_\_\_\_\_  
 Units  Metric  U.S. Survey Foot  
 Horizontal Datum \_\_\_\_\_  
 Zone \_\_\_\_\_ Epoch Date \_\_\_\_\_  
 Vertical Datum \_\_\_\_\_  
 Complies with Public Resources Code §§8801-8819  
 Complies with Public Resources Code §§8890-8902

PLS Act Ref.:  8765(d)  8771  8773  Other:

Corner/Monument:  Left as found  Established  Rebuilt  Pre-Construction  
 Found and tagged  Reestablished  Referenced  Post-Construction

Narrative of corner identified and monument as found, set, reset, replaced, or removed:

See sheet #2 for description(s):

### SURVEYOR'S STATEMENT

This Corner Record was prepared by me or under my direction in conformance with  
 the Professional Land Surveyors' Act on April 14, 2022  
 Signed [Signature] P.L.S. or R.C.E. No. 8489

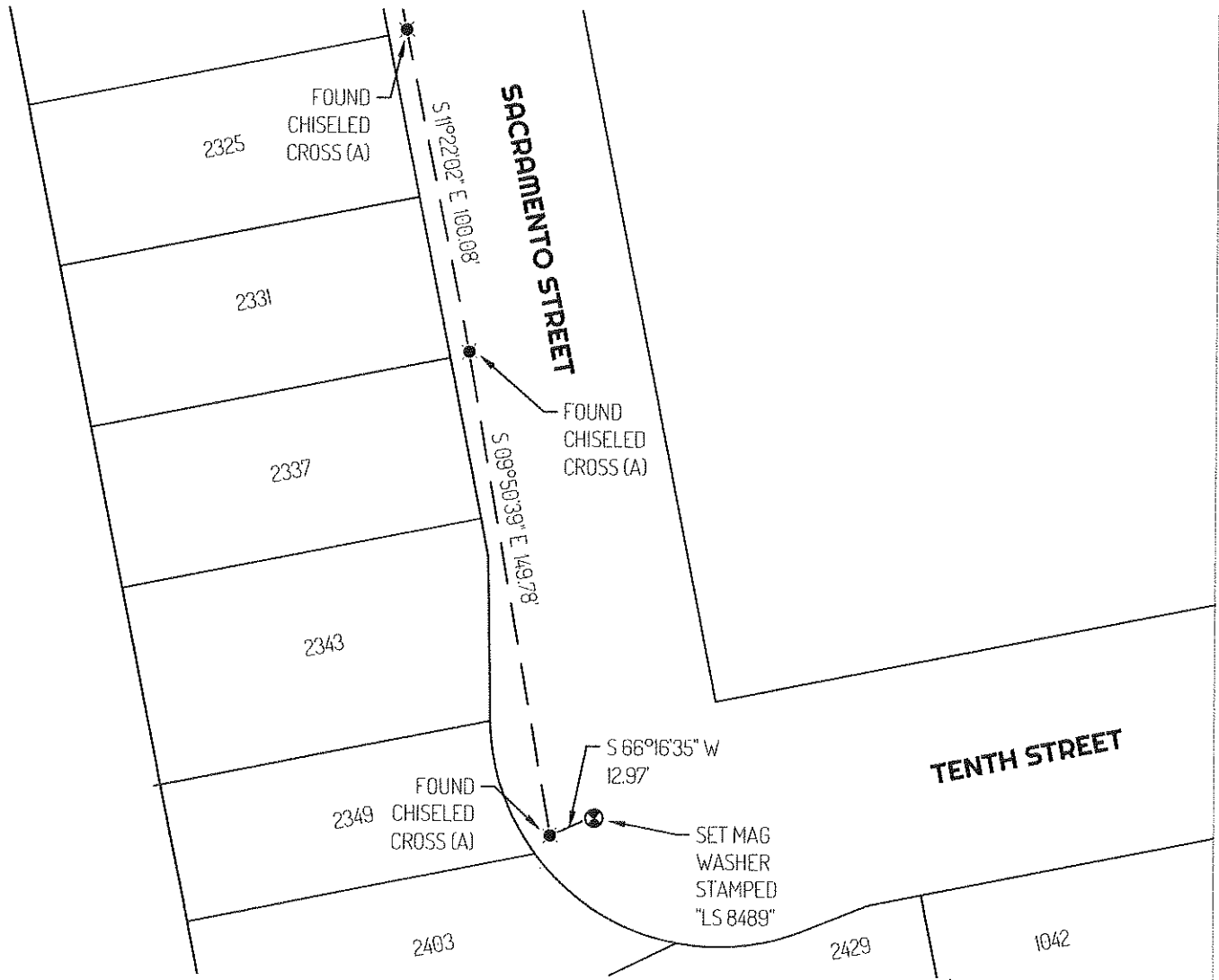


### COUNTY SURVEYOR'S STATEMENT

This Corner Record was received June 10, 2024  
 and examined and filed June 21, 2024  
 Signed James E. Hart P.L.S. or R.C.E. No. 8657  
 Title County Surveyor



County Surveyor's Comment

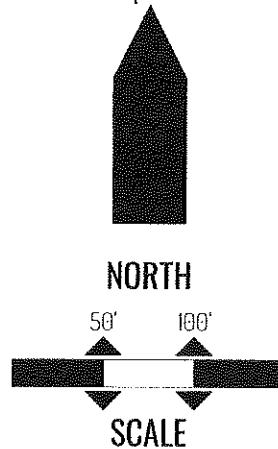


**LEGEND**

- SET CONTROL POINT
- FOUND CHISELED CROSS
- 2343 REFERENCE STREET ADDRESS
- TIE LINE
- LOT LINE

**REFERENCES**

(A) MONUMENT NOT OF RECORD



**SCALE**  
DRAWING SCALE: 1"=50'  
BASIS OF BEARINGS IS ASSUMED