

# CORNER RECORD

Agency Index CR-24-2A  
Document Number \_\_\_\_\_

City of STOCKTON County of SAN JOAQUIN, California

Brief Legal Description FOUND CHISELED CROSSES ALONG WEST SIDE OF SACRAMENTO STREET.

### CORNER TYPE

### COORDINATES (Optional)



C.M. WEBER GRANT

- Government Corner
- Meander
- Rancho
- Control
- Property
- Other

Date of Survey January 25, 2022

N. \_\_\_\_\_ E. \_\_\_\_\_

Elevation \_\_\_\_\_

Units  Metric  U.S. Survey Foot

Horizontal Datum \_\_\_\_\_

Zone \_\_\_\_\_ Epoch Date \_\_\_\_\_

Vertical Datum \_\_\_\_\_

Complies with Public Resources Code §§8801-8819

Complies with Public Resources Code §§8890-8902

PLS Act Ref.:  8765(d)  8771  8773  Other:

Corner/Monument:  Left as found  Established  Rebuilt  Pre-Construction

Found and tagged  Reestablished  Referenced  Post-Construction

Narrative of corner identified and monument as found, set, reset, replaced, or removed:

See sheet #2 for description(s):

### SURVEYOR'S STATEMENT

This Corner Record was prepared by me or under my direction in conformance with the Professional Land Surveyors' Act on April 14, 2022.  
Signed [Signature] P.L.S. or R.C.E. No. 8489

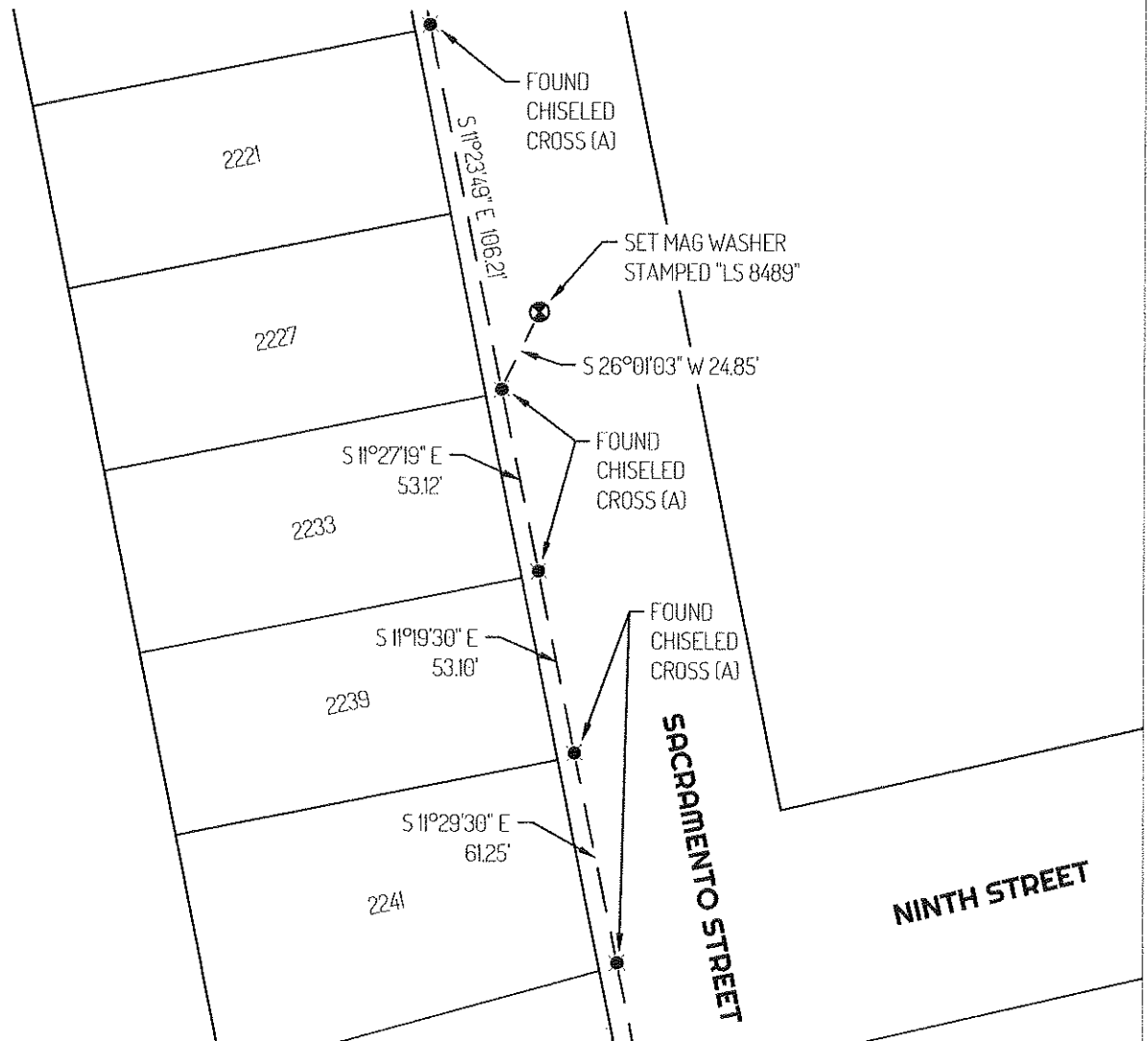


### COUNTY SURVEYOR'S STATEMENT

This Corner Record was received June 10, 2024 and examined and filed June 21, 2024.  
Signed [Signature] P.L.S. or R.C.E. No. 8657  
Title County Surveyor



County Surveyor's Comment

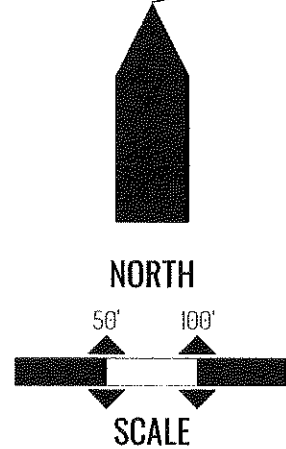


**LEGEND**

- SET CONTROL POINT
- FOUND CHISELED CROSS
- 2233 REFERENCE STREET ADDRESS
- TIE LINE
- LOT LINE

**REFERENCES**

(A) MONUMENT NOT OF RECORD



DRAWING SCALE: 1"=50'  
BASIS OF BEARINGS IS ASSUMED