

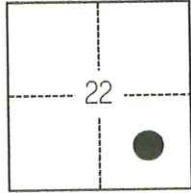
CORNER RECORD

Agency Index CR-24-218
Document Number _____

City of STOCKTON County of SAN JOAQUIN, California
Brief Legal Description FOUND CHISELED CROSSES ALONG WEST SIDE OF SACRAMENTO STREET.

CORNER TYPE

COORDINATES (Optional)



C.M. WEBER GRANT

- Government Corner
- Meander
- Rancho
- Control
- Property
- Other

Date of Survey January 25, 2022

N. _____ E. _____

Elevation _____

Units Metric U.S. Survey Foot

Horizontal Datum _____

Zone _____ Epoch Date _____

Vertical Datum _____

Complies with Public Resources Code §§8801-8819

Complies with Public Resources Code §§8890-8902

PLS Act Ref.: 8765(d) 8771 8773 Other:

Corner/Monument: Left as found Established Rebuilt Pre-Construction

Found and tagged Reestablished Referenced Post-Construction

Narrative of corner identified and monument as found, set, reset, replaced, or removed:

See sheet #2 for description(s):

SURVEYOR'S STATEMENT

This Corner Record was prepared by me or under my direction in conformance with
the Professional Land Surveyors' Act on April 14, 2022
Signed [Signature] P.L.S. or R.C.E. No. 8489

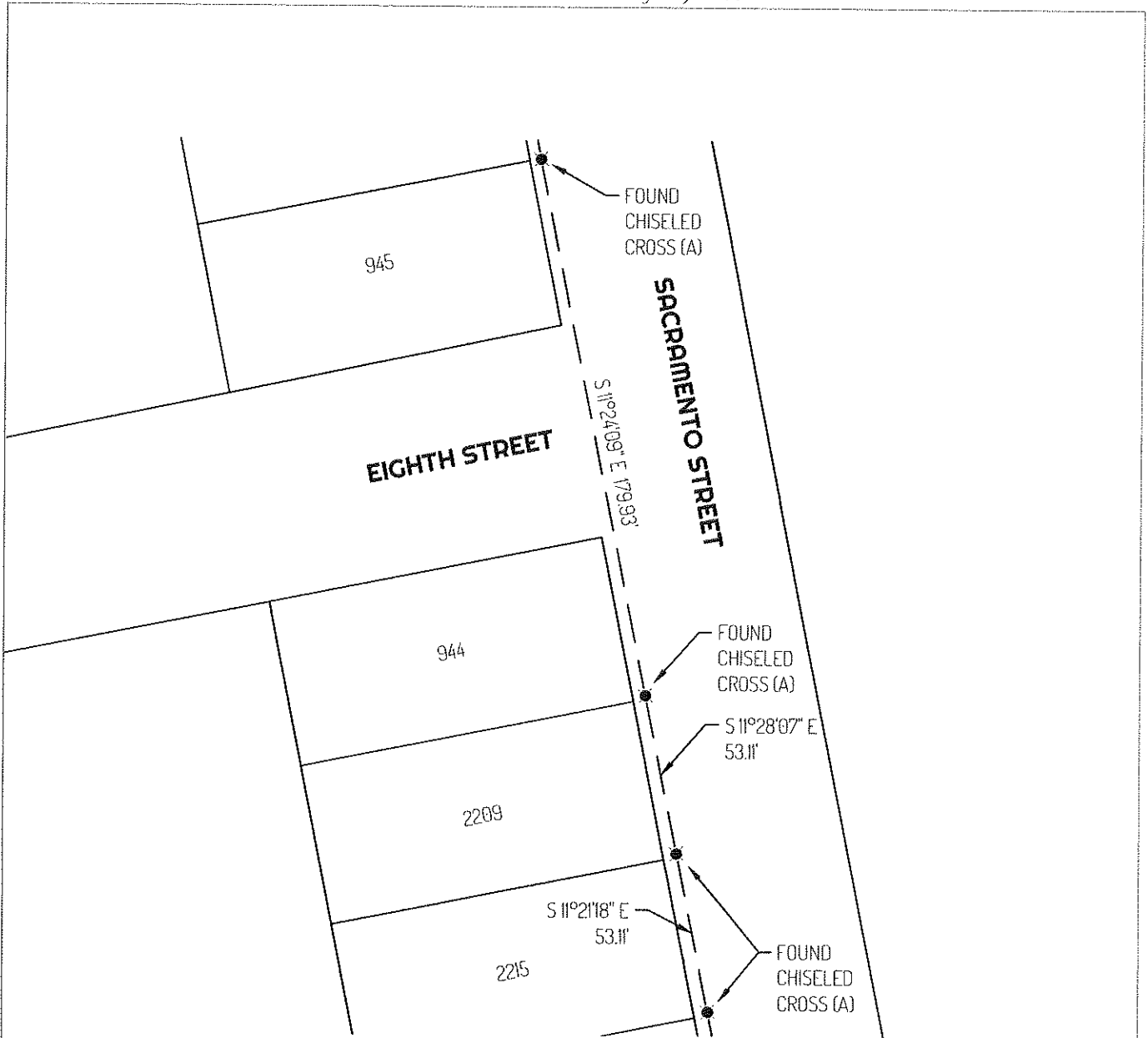


COUNTY SURVEYOR'S STATEMENT

This Corner Record was received June 10, 2024
and examined and filed June 21, 2024
Signed James E. Hart P.L.S. or R.C.E. No. 8657
Title County Surveyor



County Surveyor's Comment



LEGEND

- SET CONTROL POINT
- FOUND CHISELED CROSS
- 2209 REFERENCE STREET ADDRESS
- TIE LINE
- LOT LINE

REFERENCES

(A) MONUMENT NOT OF RECORD

