

CORNER RECORD

Agency Index CR-24-216

Document Number _____

City of STOCKTON County of SAN JOAQUIN, California

Brief Legal Description FOUND CHISELED CROSSES ALONG WEST SIDE OF SACRAMENTO STREET.

CORNER TYPE

COORDINATES (Optional)



C.M. WEBER GRANT

- Government Corner
- Meander
- Rancho
- Control
- Property
- Other

Date of Survey January 25, 2022

N. _____ E. _____

Elevation _____

Units Metric U.S. Survey Foot

Horizontal Datum _____

Zone _____ Epoch Date _____

Vertical Datum _____

Complies with Public Resources Code §§8801-8819

Complies with Public Resources Code §§8890-8902

PLS Act Ref.: 8765(d) 8771 8773 Other:

Corner/Monument: Left as found Established Rebuilt Pre-Construction

Found and tagged Reestablished Referenced Post-Construction

Narrative of corner identified and monument as found, set, reset, replaced, or removed:

See sheet #2 for description(s):

SURVEYOR'S STATEMENT

This Corner Record was prepared by me or under my direction in conformance with the Professional Land Surveyors' Act on April 14, 2022

Signed [Signature] P.L.S. or R.C.E. No. 8489



COUNTY SURVEYOR'S STATEMENT

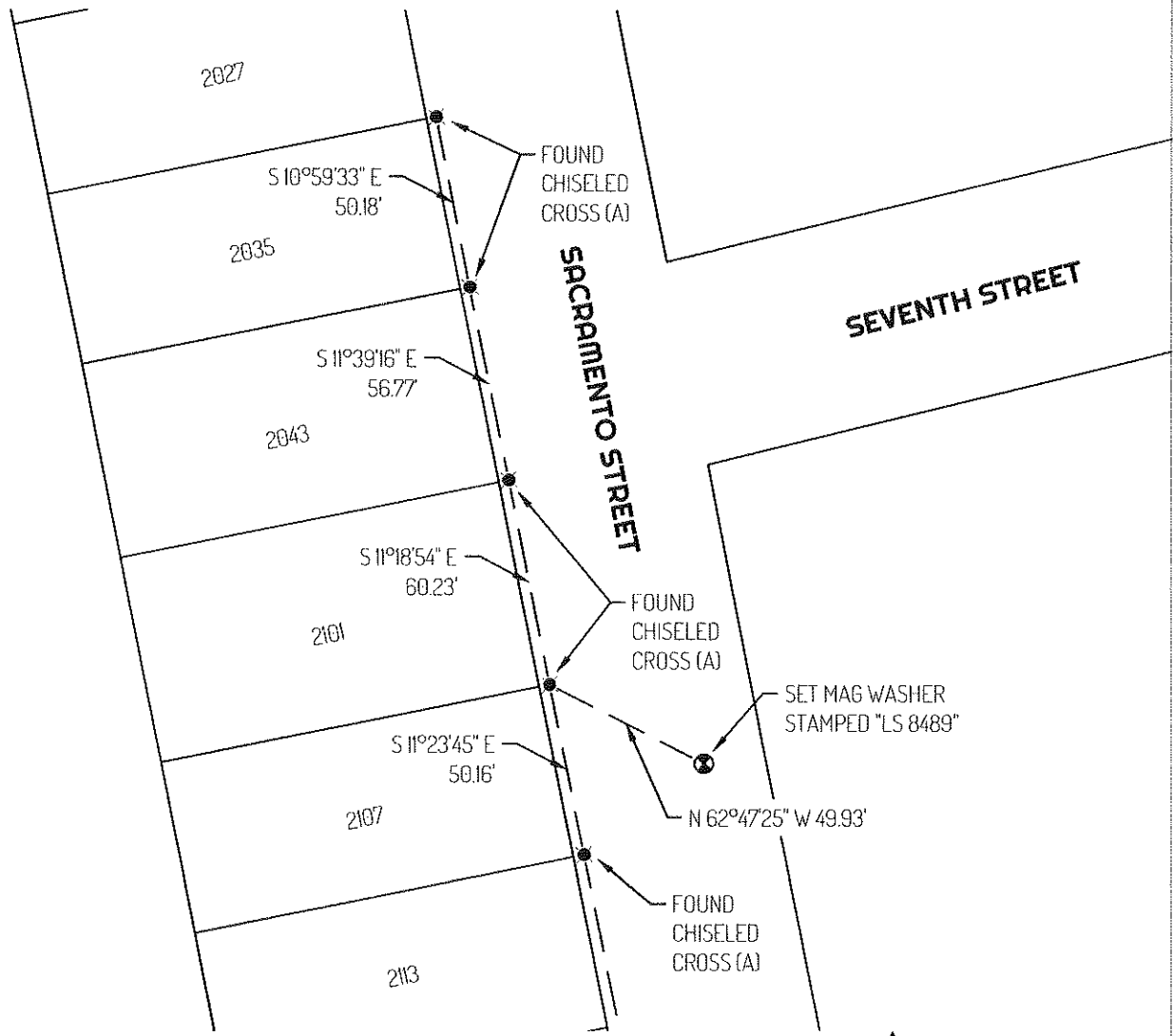
This Corner Record was received June 10, 2024 and examined and filed June 21, 2024

Signed James E. Hart P.L.S. or R.C.E. No. 8657

Title County Surveyor

County Surveyor's Comment _____





LEGEND

- SET CONTROL POINT
- FOUND CHISELED CROSS
- 2101 REFERENCE STREET ADDRESS
- TIE LINE
- LOT LINE

REFERENCES

(A) MONUMENT NOT OF RECORD

